

Safety – Operation – Maintenance

Keep this document in a safe place

Read and understand this manual before operating your air tool

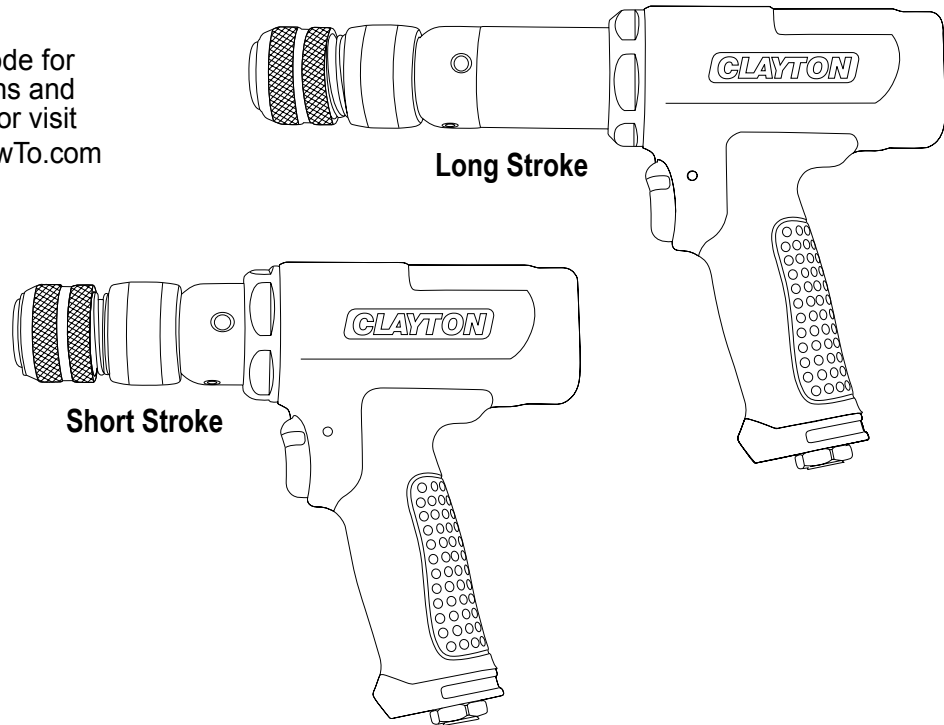
CLAYTON
Dustless Made Simple™

Air Hammers

Models 690-AH3800SK 690-AH2700LK



Scan this QR code for
online instructions and
documentation, or visit
www.ClaytonHowTo.com



⚠ WARNING

Follow all safety rules for the protection of operating personnel as well as adjacent areas. Always inspect and maintain this tool before use. Clayton Dust Collection Shrouds are designed for use with a variety of air tools. Please refer to the Air Tool Manufacturer's Documentation for Safety, Operations and Maintenance of all air tools used in conjunction with Clayton Dust Collection Shrouds.

SAFETY LEGEND



⚠ WARNING

Read and understand operator's manual before using this equipment.



⚠ WARNING

Eye protection is required when operating this equipment.



⚠ WARNING

Hearing protection is recommended when operating this equipment.



⚠ WARNING

Respiratory protection is recommended when operating this equipment.

⚠ WARNING

Some dust created by sanding, grinding, drilling, and other construction activities contain chemicals known to cause cancer, birth defects or other reproductive harm. Some examples of these chemicals are:

- Lead from lead-based paints
- Crystalline silica from bricks and cement and other masonry products
- Chromium and other heavy metals from paint and primers

Your risk from these exposures varies, depending on how often you do this type of work. To reduce your exposure to these chemicals: work in a well ventilated area, and work with approved safety equipment, such as dust masks that are specially designed to filter out microscopic particles.

SAFETY INSTRUCTIONS

Carefully read all instructions before operating any Tool.

Products offered by Clayton should not be modified, converted or otherwise altered from the original design without express written consent from Clayton Associates, Inc.

Do not use this tool for anything other than its intended applications.

This tool is not intended for use in potentially explosive atmospheres and is not insulated against contact with electrical power.

Accessories & Bits

- Before mounting accessories, visually inspect for defects. Do not use defective accessories.
- Follow tool specifications before choosing size and type of accessory

WARNING

- Always wear eye protection. Operator of tool is responsible for following: eye, face, respiratory, hearing and body protection.

CAUTION

- Hand, wrist and arm injury may result from repetitive work, motion and overexposure to vibration.
- Keep hand and clothing away from working end of the tool
- Be sure that any loose clothing, hair and all jewelry is properly restrained

CAUTION

- Disconnect air hose from tool when changing bits or otherwise handling the working end of the tool

CAUTION

- Make sure that work area is uncluttered, and others are at a safe range from the tools and debris
- Use a vise or clamping device to hold work piece firmly in place
- Do not apply excessive force on tool or apply "rough" treatment to it
- Potentially explosive atmospheres can be caused by dust and fumes resulting from sanding or grinding. Always use dust extraction or suppression systems which are suitable for the material being processed

MAINTENANCE INSTRUCTIONS

Important

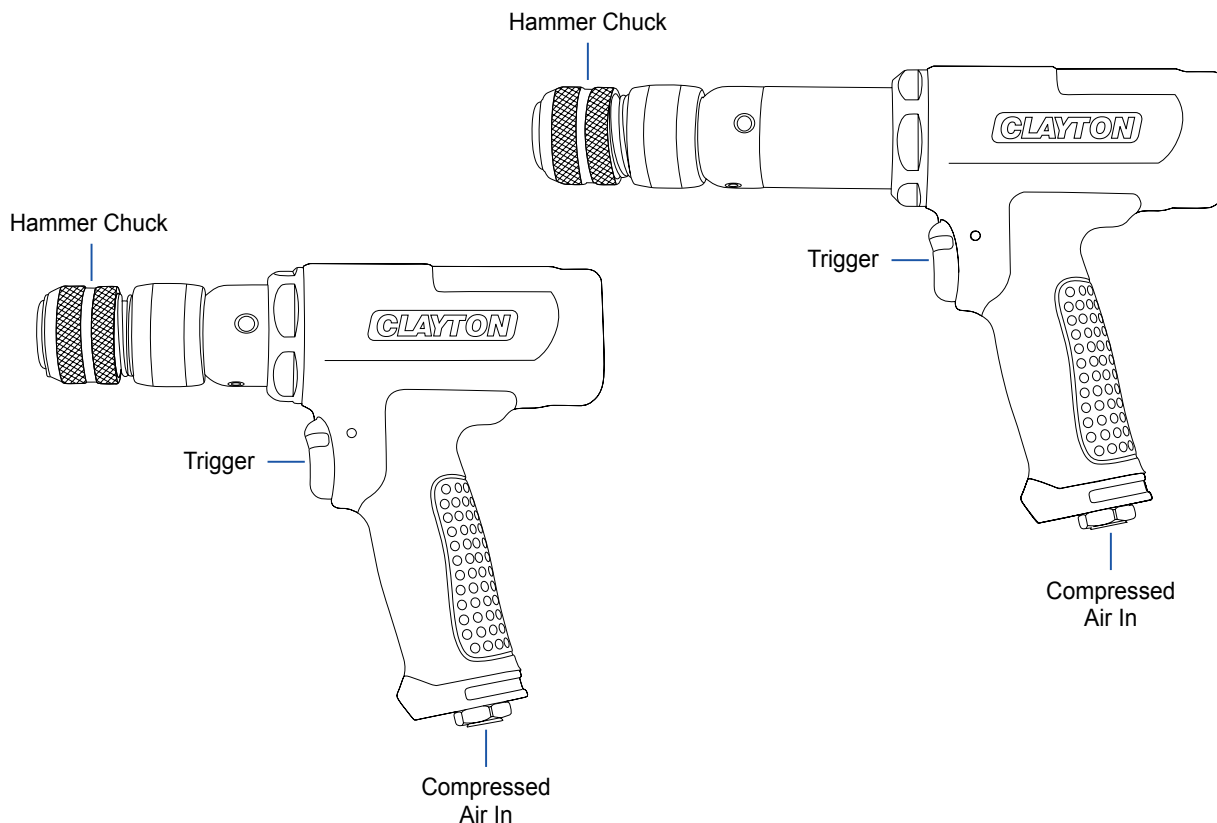
A Preventative Maintenance Program is recommended whenever portable power tools are used.

Routine Maintenance

- Use only genuine Clayton replacement parts to ensure quality
- Clean the tool with a damp cloth. Do not use petroleum based cleaners
- Visually inspect for visible damage and signs of deterioration. Replace damaged or worn components before use
- Apply 2 drops of air tool oil every 8 hours of use

WHAT'S IN THE BOX

1. Remove and identify the tool and accessories included in the box.
2. Visually inspect tool to guarantee that no parts are missing or damaged.
3. Familiarize yourself with the tool.



SPECIFICATIONS & REQUIREMENTS

690-AH3800SK 3800 bps
 Consumption 20 cfm @ 90 psi
 Stroke 2.25 in
 Bore 22 mm
 Weight 5.39 lbs
 Dimensions 9.5 x 8 in

690-AH2700LK 2700 bps
 Consumption 20 cfm @ 90 psi
 Stroke 3.5 in
 Bore 22 mm
 Weight 6.19 lbs
 Dimensions 11.5 x 8 in

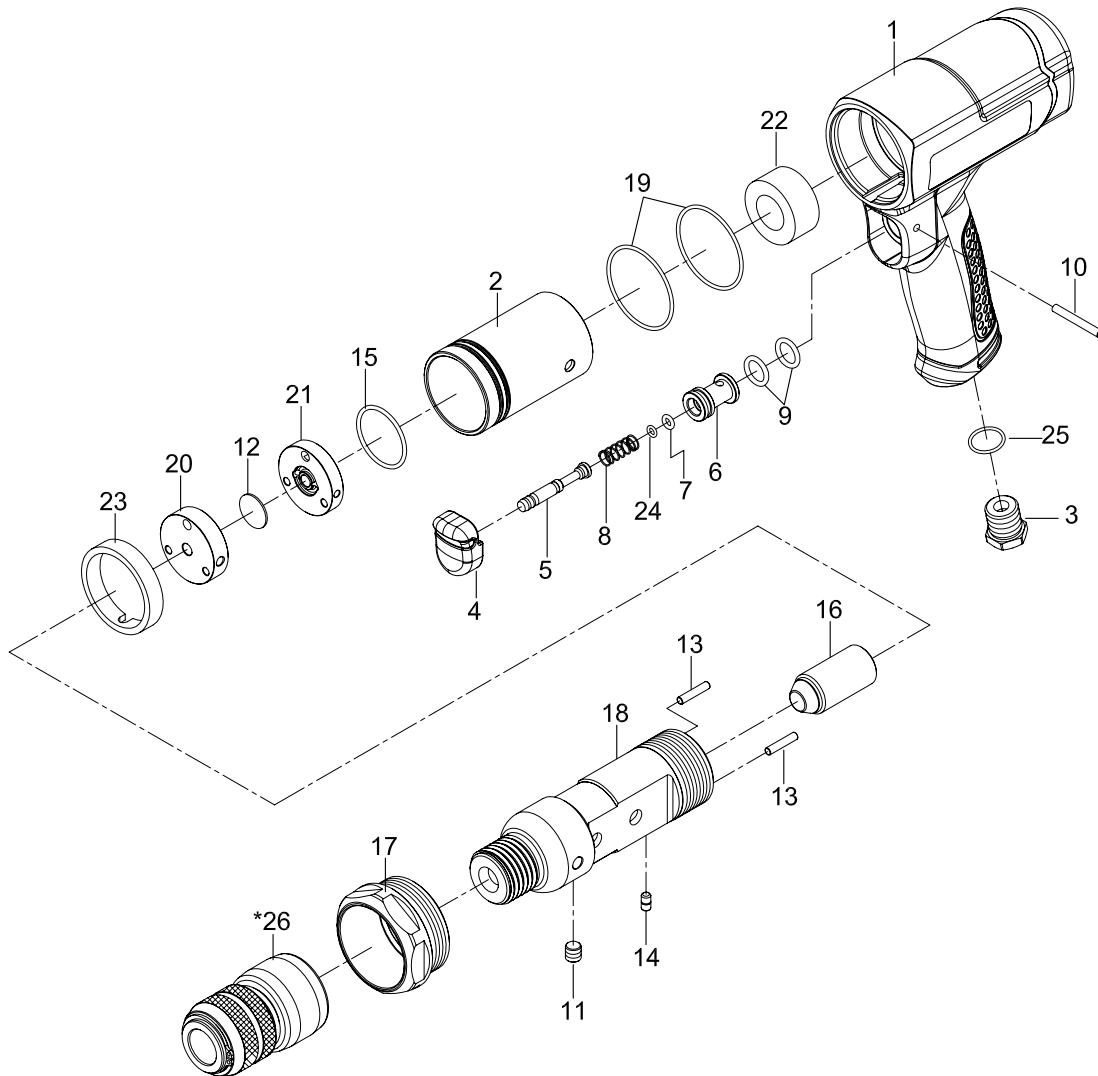
ILLUSTRATED PARTS BREAKDOWN

690-AH3800SK

Short Stroke Air Hammer

Seq	Item No	Description
1	690-AH3800SK-1	Housing
2	690-AH3800SK-2	End Cap
3	690-AH3800SK-3	Air Inlet
4	690-AH3800SK-4	Trigger
5	690-AH3800SK-5	Valve Stem
6	690-AH3800SK-6	Bushing
7	690-AH3800SK-7	O-Ring
8	690-AH3800SK-8	Spring
9	690-AH3800SK-9	O-Ring
10	690-AH3800SK-10	Spring Pin
11	690-AH3800SK-11	Screw
12	690-AH3800SK-12	Valve
13	690-AH3800SK-13	Pin

Seq	Item No	Description
14	690-AH3800SK-14	Pin
15	690-AH3800SK-15	O-Ring
16	690-AH3800SK-16	Piston
17	690-AH3800SK-17	Clamp Nut
18	690-AH3800SK-18	Barrel
19	690-AH3800SK-19	O-Ring
20	690-AH3800SK-20	Valve Case
21	690-AH3800SK-21	Valve Cover
22	690-AH3800SK-22	Rear Cushion
23	690-AH3800SK-23	Front Shock Isolator
24	690-AH3800SK-24	O-Ring
25	690-AH3800SK-25	O-Ring
26	690-AH3800SK-26	Quick Change Retainer



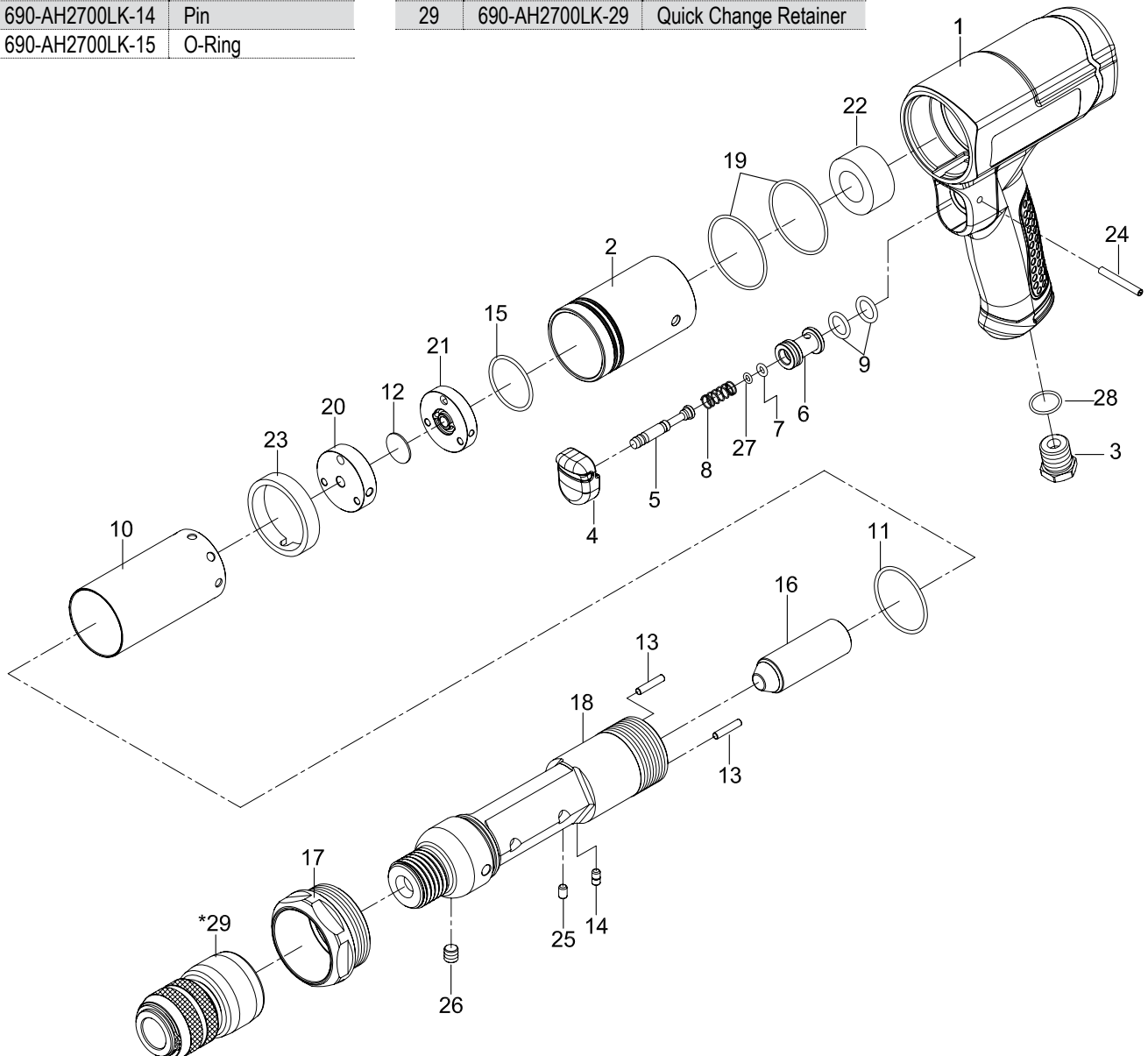
ILLUSTRATED PARTS BREAKDOWN

690-AH2700LK

Long Stroke Air Hammer

Seq	Item No	Description
1	690-AH2700LK-1	Housing
2	690-AH2700LK-2	End Cap
3	690-AH2700LK-3	Air Inlet
4	690-AH2700LK-4	Trigger
5	690-AH2700LK-5	Valve Stem
6	690-AH2700LK-6	Bushing
7	690-AH2700LK-7	O-Ring
8	690-AH2700LK-8	Spring
9	690-AH2700LK-9	O-Ring
10	690-AH2700LK-10	Exhaust Deflector
11	690-AH2700LK-11	O-Ring
12	690-AH2700LK-12	Valve
13	690-AH2700LK-13	Pin
14	690-AH2700LK-14	Pin
15	690-AH2700LK-15	O-Ring

Seq	Item No	Description
16	690-AH2700LK-16	Piston
17	690-AH2700LK-17	Clamp Nut
18	690-AH2700LK-18	Barrel
19	690-AH2700LK-19	O-Ring
20	690-AH2700LK-20	Valve Case
21	690-AH2700LK-21	Valve Cover
22	690-AH2700LK-22	Rear Cushion
23	690-AH2700LK-23	Front Shock Isolator
24	690-AH2700LK-24	Spring Pin
25	690-AH2700LK-25	Pin
26	690-AH2700LK-26	Screw
27	690-AH2700LK-27	O-Ring
28	690-AH2700LK-28	O-Ring
29	690-AH2700LK-29	Quick Change Retainer



LIMITED LIFETIME WARRANTY TERMS AND CONDITIONS

Warranty Terms

Clayton Associates, Inc. guarantees its manufactured products against defects in materials or workmanship and will either repair or replace all parts that prove defective under normal use during the lifetime of the products. The warranty period shall commence from the date of paid invoice.

This warranty does not cover (a) repairs due to normal wear, accident, neglect, misuse, or use other than as indicated in the instruction booklet (b) products manufactured by third parties and distributed by Clayton (c) wear items such as bearings, rotor blades, regulators, valve stems, levers, shrouds, guards, O-rings, seals, gaskets, motor brushes, and other wearable parts.

Repair within the Continental US

During the first 90 days of the warranty period, Clayton will provide parts and labor to the customer's site at no charge or pay freight costs associated with returning the products for repair to a Clayton selected service location and repair the product at no charge. Clayton personnel will determine the best way to repair the product.

Past 90 days, Clayton will provide parts to the customer's site at no charge or the customer may ship the product to a Clayton selected service location at customer's expense and Clayton will repair the product at no charge and provide return shipping.

Repair Outside the Continental US

Clayton will provide parts to the customer's site at no charge or the customer may ship the product to a Clayton selected service location at customer's expense and Clayton will repair the product at no charge and provide return shipping.

Limitation of Liability

Clayton shall not in any event be liable for any damages, loss of production time or profits, whether based on contract, warranty, negligence, strict liability or otherwise, including without limitation any consequential, incidental or special damages, arising with respect to the equipment or its failure to operate.

Clayton Associates, Inc. makes no other warranty or representation of any kind, except that of title, and all other warranties, express or implied, including warranties of merchantability or fitness for any particular purpose, are hereby expressly disclaimed.



Clayton products are proudly made in the USA

