

Safety – Operation – Maintenance

Keep this document in a safe place

Read and understand this manual before operating your air tool



Clear Revolution JHook Shrouds



7/8" Shroud Models with Prefix: Standard (674-A1114J14, 674-A1216J, 774-A1216J), Notched (674-A1214J, 774-A1214J)

Designed for 7/8" abrasive discs on a right angle or straight grinder

Maximum Speed: 25,000 RPM, Recommended Speed: 12,000 RPM, Maximum Abrasive size: 7/8"

1-1/4" Shroud Models with Prefix: Standard (674-A1232J, 774-A1232J), Notched (674-A1230J, 774-A1230J)

Designed for 1-1/4" abrasive discs on a right angle or straight grinder

Maximum Speed: 25,000 RPM, Recommended Speed: 12,000 RPM, Maximum Abrasive size: 1-1/4"

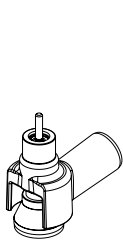
2-1/2" Shroud Models with Prefix: Standard (674-A1248J, 774-A1248J)

Designed for 2-1/2" abrasive discs on a right angle or straight grinder

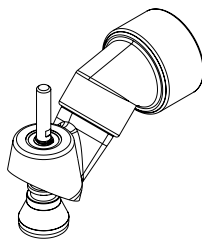
Maximum Speed: 25,000 RPM, Recommended Speed: 12,000 RPM, Maximum Abrasive size: 2-1/2"



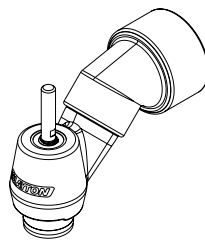
Scan this QR code for online instructions and documentation, or visit www.ClaytonHowTo.com



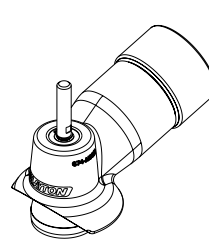
7/8" Tight Access



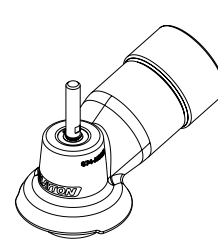
7/8" Notched



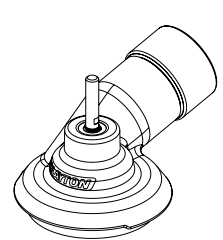
7/8" Standard



1-1/4" Notched



1-1/4" Standard



2-1/2" Standard

⚠ WARNING

Follow all safety rules for the protection of operating personnel as well as adjacent areas. Always inspect and maintain this tool before use. Clayton Dust Collection Shrouds are designed for use with a variety of air tools. Please refer to the Air Tool Manufacturer's Documentation for Safety, Operations and Maintenance of all air tools used in conjunction with Clayton Dust Collection Shrouds.

SAFETY LEGEND



⚠ WARNING

Read and understand operator's manual before using this equipment.



⚠ WARNING

Eye protection is required when operating this equipment



⚠ WARNING

Hearing protection is recommended when operating this equipment.



⚠ WARNING

Respiratory protection is recommended when operating this equipment.

⚠ WARNING

Some dust created by sanding, grinding, drilling, and other construction activities contain chemicals known to cause cancer, birth defects or other reproductive harm. Some examples of these chemicals are:

- Lead from lead-based paints
- Crystalline silica from bricks and cement and other masonry products
- Chromium and other heavy metals from paint and primers

Your risk from these exposures varies, depending on how often you do this type of work. To reduce your exposure to these chemicals: work in a well ventilated area, and work with approved safety equipment, such as dust masks that are specially designed to filter out microscopic particles.

Clayton Dust Collection Shrouds aid in the collection of airborne dust and debris, but the level of collection is dependent upon the performance of the vacuum to which it is connected, the speed of the air tool used, and the way in which a tool is handled by the user.

Do not assume that the Dust Collection Shroud is collecting 100% of the dust.

SAFETY INSTRUCTIONS

Please refer to the Air Tool Manufacturer's Documentation for Safety, Operations, and Maintenance of all air tools in conjunction with Clayton Dust Collection Shrouds.

Carefully read all instructions before operating any Clayton Dust Collection Shroud.

Products offered by Clayton should not be modified, converted or otherwise altered from the original design without express written consent from Clayton Associates, Inc.

Tool Intent

Clayton Dust Collection Shrouds are designed for use with a variety of air tools and provide dust collection during operations such as grinding, deburring, blending and polishing operations on materials such as metal, plastic, fiberglass, composites, rubber, glass and stone. Please refer to the air tool manufacturer's documentation for Tool Intent of all air tools used in conjunction with Clayton Dust Collection Shrouds.

Do not use this tool for anything other than its intended applications.

This tool is not intended for use in potentially explosive atmospheres and is not insulated against contact with electrical power.

Clayton Dust Collection Shrouds are not designed to replace manufacturer installed safety guards and shields.

Never remove the factory installed safety devices from air tools used in conjunction with Clayton Dust Collection Shrouds.

Accessories

- Do not use abrasives, backup pads, or other accessories that exceed the speed rating of this Dust Collection Shroud
- Do not use an air tool that exceeds the speed rating of this Dust Collection Shroud
- Do not use abrasives or backup pads that exceed the size rating of this Dust Collection Shroud
- Never replace the mandrels on Clayton Dust Collection Shrouds with other commercially available mandrels. Mandrels included with the shrouds have been engineered and balanced specifically for this application
- Before mounting accessories, visually inspect for defects. Do not use defective accessories
- Follow tool specifications before choosing size and type of accessory

WARNING

- Always wear eye protection. Operator of tool is responsible for following: eye, face, respiratory, hearing and body protection.

CAUTION

- Hand, wrist and arm injury may result from repetitive work, motion and overexposure to vibration.
- Keep hand and clothing away from working end of the tool
- Be sure that any loose clothing, hair and all jewelry is properly restrained

CAUTION

- Never exceed the RPM rating of the shroud or abrasive.
- Disconnect air hose from tool when changing abrasives, removing the shroud, or otherwise handling the working end of the tool

CAUTION

DO NOT USE if tool vibration is excessive. Correct cause, and retest to ensure safe operation

- Make sure that work area is uncluttered, and others are at a safe range from the tools and debris
- Use a vise or clamping device to hold work piece firmly in place
- Do not apply excessive force on tool or apply "rough" treatment to it
- Potentially explosive atmospheres can be caused by dust and fumes resulting from sanding or grinding. Always use dust extraction or suppression systems which are suitable for the material being processed
- Use only the proper size and style abrasive for the shroud, backup pad and mandrel
- Oversized or improper abrasives may contact the shroud and cause premature wear or failure

GETTING STARTED

Hose Length

The vacuum hose included with the tool may be shortened to suit your particular needs. The hose can be easily cut to the desired length with a knife or hose cutting tools. Follow all safety instructions provided with cutting tools to prevent injury.

Connecting the Shroud

Always disconnect the tool from power before connecting or disconnecting the Dust Collection Shroud.

- The mandrel is integral to the shroud and should not be removed. Connect the mandrel and shroud to the air tool as a single unit
- This tool is designed to work with air tools that use a collet. See illustrated parts breakdown to identify the collet size that matches your mandrel
- Loosen the tool collet
- Slide the end of the shroud mandrel into the tool collet
- Tighten the collet, maintaining a small space (1-2 mm) between the end of the collet and the shroud
- The shroud should rotate freely around the mandrel when properly connected
- Hold the vacuum hose firmly when activating the tool to prevent the shroud from rotating
- If excessive vibration occurs, stop using the tool immediately, find, and correct the cause

Replacing the Backup Pad

Always disconnect the tool from power before changing abrasives.

- Hold the collet to prevent rotation or hold the shaft of the shroud with the supplied wrench
- Unthread the existing backup pad by turning counter clockwise. Thread on the new backup pad by turning clockwise

Attaching Abrasives

- Center the abrasive over the backup pad with the abrasive side out
- Touch the abrasive to the backup pad and lightly press to ensure a good grip

MAINTENANCE INSTRUCTIONS

Important

A Preventative Maintenance Program is recommended whenever portable power tools are used.

Routine Maintenance

- Use only genuine Clayton replacement parts to ensure quality
- Clean the tool with a damp cloth. Do not use petroleum based cleaners
- Visually inspect shafts, bearings, backup pads, and abrasives for frays, visible damage and signs of deterioration. Replace damaged or worn components before use

TROUBLE SHOOTING

Excessive vibration is felt during tool use

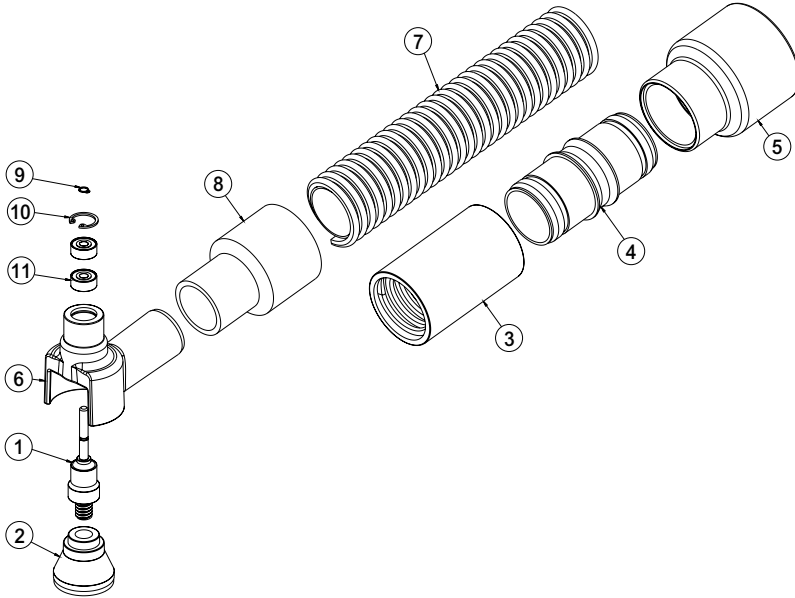
- Shroud mandrel may be damaged or bent – stop using tool immediately, identify cause and correct
- Backup pad may be worn or damaged – replace backup pad

Excessive dust is evident during operation

- Clayton Dust Collection Shrouds reduce airborne (respirable) dust. You may see some larger debris not being collected that may require vacuuming at the end of grinding operations. This is normal
- Vacuum may be turned off, or vacuum filters may be clogged – check vacuum to ensure that it is operating properly, and that filters are clean
- Hose or shroud may be blocked – disconnect all hose fittings, and ensure that the pathway from shroud to vacuum port is clear
- Abrasive grit may be too coarse. On softer materials, coarse abrasives may generate overwhelming amounts of dust – switch to a finer grit abrasive, and or use a slower speed tool

ILLUSTRATED PARTS BREAKDOWN

7/8" Tight Access



SEQ	ITEM NO	DESCRIPTION
1	672-026	Mandrel, Compact J-Hook 1/8 Collar
2	672-M14J	Backup Pad 7/8in JHook (yellow)
3	673-A0206	Swivel Fitting, 3/4" Hose
4	673-A1288	Swivel Fitting Coupler
5	673-B0054	Swivel Fitting, 1"
6	674-11140	Carbon Fiber Shroud 7/8" Raw Part
7	921-0750PYL	Hose, 3/4", Plastic, Yel & Black
8	921-1212HTSC	Hose Cuff 3/4in hose to 3/4" tool static
9	929-RR.125EX	Retaining Ring 1.8" External
10	929-RR.375IN	Retaining Ring 3/8" Internal
11	931-R22LLA3	Bearing, 1/8ID x 3/8OD Light Contact Shield
12	WE12050400-LTSZ	No 12 Star Washer, Ext Tooth

ABRASIVES

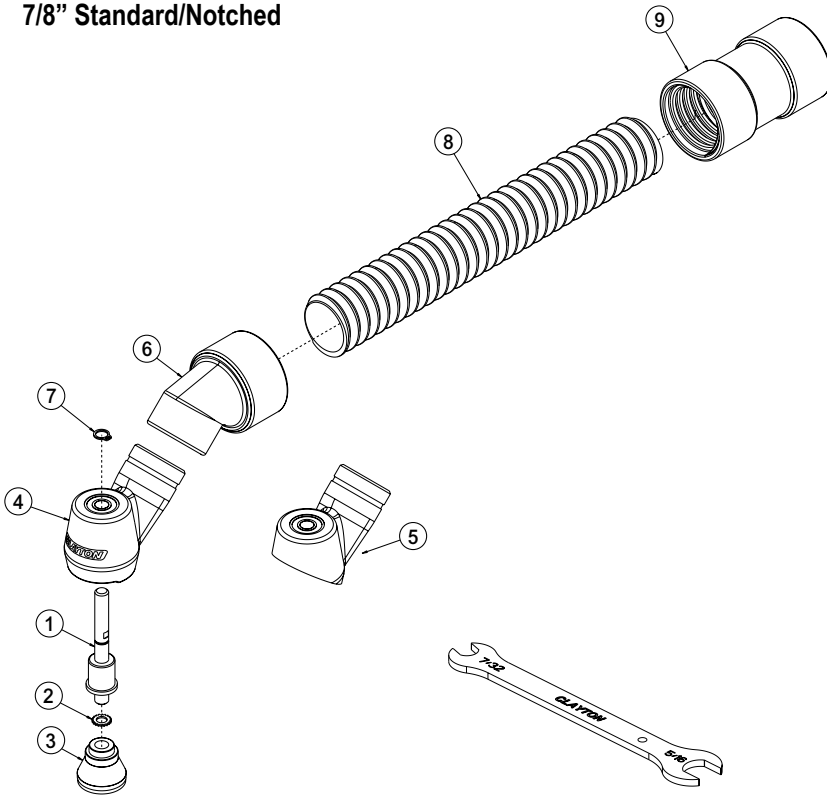
The following Clayton abrasives are recommended for maximum dust collection. Additional grits and minerals are available.

GOLD 7/8 DISCS

ITEM NO	DESC
814-G060H	60 GRIT
814-G080H	80 GRIT
814-G120H	120 GRIT
814-G180H	180 GRIT
814-G220H	220 GRIT
814-G240H	240 GRIT
814-G320H	320 GRIT

ILLUSTRATED PARTS BREAKDOWN

7/8" Standard/Notched



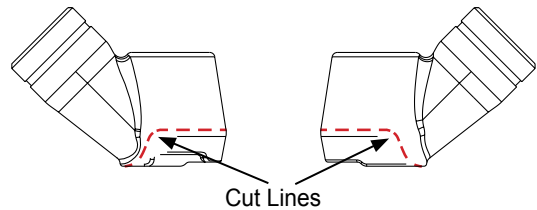
SEQ	ITEM NO	DESCRIPTION
1	672-004L	Clear Rev Jhook Mandrel, .250"
2	WE12050400-LTSZ	No 12 Star Washer, Ext Tooth
3	672-M14J	Backup Pad 7/8" Jhook (Yellow)
4	674-A10161	Rotary Shroud 1"
5	674-A12140	Rotary Shroud 1" Notched
6	673-M16F-45	1" X 45 Deg Female Swivel
7	929-RR.250EX	Retaining Ring 1/4" External
8	921-1000WBKSC	1" Vac Hose Wire Supported Static Conductive
9	673-M16C16	Swivel Coupler, 1" To 1" Hose
*	672-0WR	Wrench For Shrouds

MANDREL OPTIONS

Shrouds with a 674- prefix are supplied with a 1/4inch mandrel to fit a 1/4inch collet. Shrouds with a 774- prefix are supplied metric mandrels per the table below

ITEM NO SUFFIX	REPLACEMENT MANDREL	MANDREL SIZE	COLLET SIZE
-480S	672-004L-480S	4.8MM SHORT	4.8MM
-480L	672-004L-480L	4.8MM LONG	4.8MM
-495S	672-004L-495S	4.95MM SHORT	4.95MM
-495L	672-004L-495L	4.95MM LONG	4.95MM
-600S	672-004L-600S	6MM SHORT	6MM
-600L	672-004L-600L	6MM LONG	6MM

Clayton Clear Revolution shrouds are made of Lexan (polycarbonate). In some instances part of the shroud may be removed to allow access to tight areas. The diagrams below show the maximum permissible cut lines on each shroud. The shrouds may be cut using a band saw, dremel, or similar cutting tool. Remove the least amount of material possible. Cutting the shroud may reduce the ability of the shroud to collect dust. Once a shroud is altered, it is no longer returnable for refund or replacement.



ABRASIVES

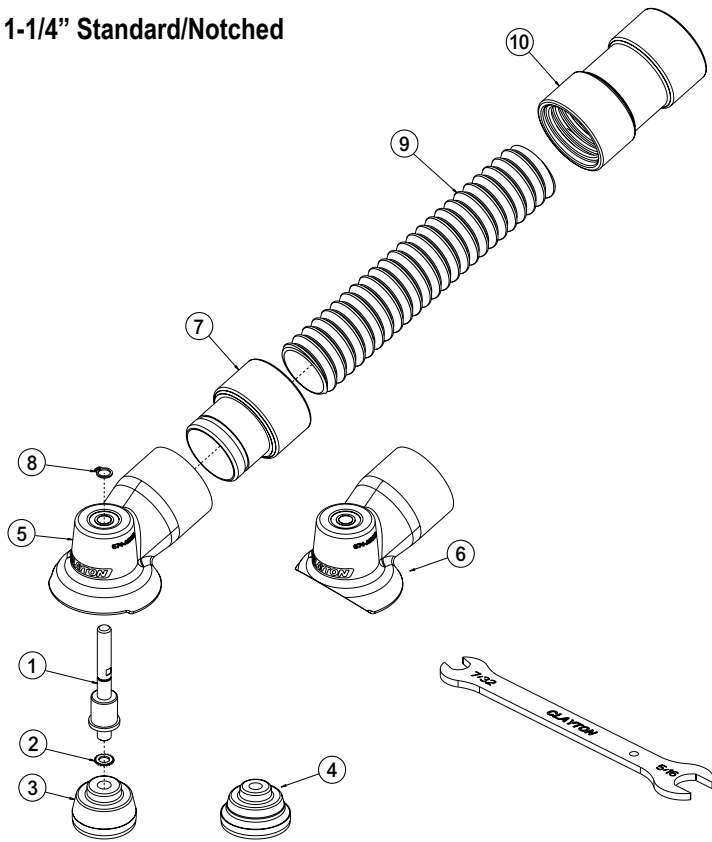
The following Clayton abrasives are recommended for maximum dust collection. Additional grits and minerals are available.

GOLD 7/8" DISCS

ITEM NO	DESC
814-G060H	60 GRIT
814-G080H	80 GRIT
814-G120H	120 GRIT
814-G180H	180 GRIT
814-G220H	220 GRIT
814-G240H	240 GRIT
814-G320H	320 GRIT

ILLUSTRATED PARTS BREAKDOWN

1-1/4" Standard/Notched



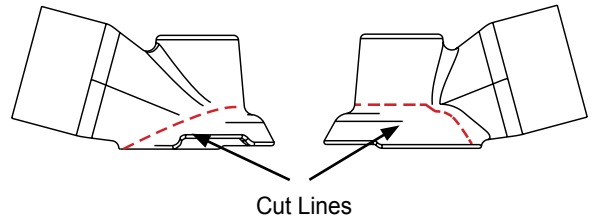
SEQ	ITEM NO	DESCRIPTION
1	672-004L	Clear Rev Jhook Mandrel, .250"
2	WE12050400-LTSZ	No 12 Star Washer, Ext Tooth
3	672-M20J	Backup Pad 1.25" Jhook
4	672-M21J	Backup Pad 1-5/16" Jhook
5	674-A10321	2" Composite Shroud Raw Part
6	674-A12300	Rotary Shroud 2" Notched
7	673-M16M	Swivel Connector, 1" Male
8	929-RR.250EX	Retaining Ring 1/4" External
9	921-1000WBKSC	1" Vac Hose Wire Supported Static Conductive
10	673-M16C16	Swivel Coupler, 1" To 1" Hose
*	672-0WR	Wrench For Shrouds

MANDREL OPTIONS

Shrouds with a 674- prefix are supplied with a 1/4inch mandrel to fit a 1/4inch collet. Shrouds with a 774- prefix are supplied metric mandrels per the table below

ITEM NO SUFFIX	REPLACEMENT MANDREL	MANDREL SIZE	COLLET SIZE
-480S	672-004L-480S	4.8MM SHORT	4.8MM
-480L	672-004L-480L	4.8MM LONG	4.8MM
-495S	672-004L-495S	4.95MM SHORT	4.95MM
-495L	672-004L-495L	4.95MM LONG	4.95MM
-600S	672-004L-600S	6MM SHORT	6MM
-600L	672-004L-600L	6MM LONG	6MM

Clayton Clear Revolution shrouds are made of Lexan (polycarbonate). In some instances part of the shroud may be removed to allow access to tight areas. The diagrams below show the maximum permissible cut lines on each shroud. The shrouds may be cut using a band saw, dremel, or similar cutting tool. Remove the least amount of material possible. Cutting the shroud may reduce the ability of the shroud to collect dust. Once a shroud is altered, it is no longer returnable for refund or replacement.



ABRASIVES

The following Clayton abrasives are recommended for maximum dust collection. Additional grits and minerals are available.

GOLD 1-1/4" DISCS

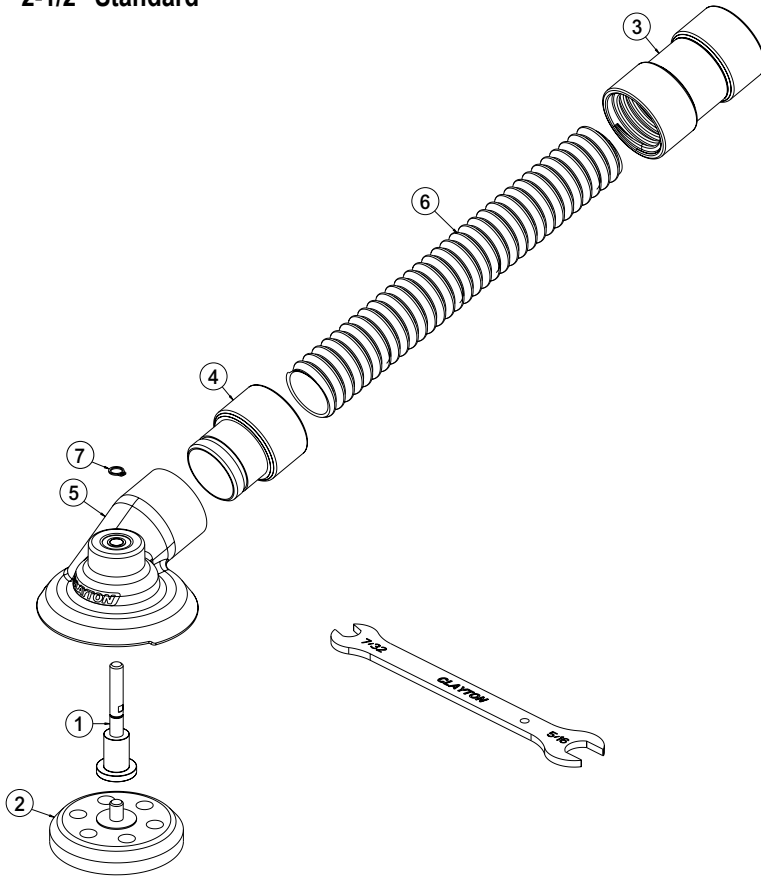
ITEM NO	DESC
820-G060H	60 GRIT
820-G080H	80 GRIT
820-G120H	120 GRIT
820-G180H	180 GRIT
820-G220H	220 GRIT
820-G240H	240 GRIT
820-G320H	320 GRIT

GOLD 1-5/16" DISCS

ITEM NO	DESC
821-G060H	60 GRIT
821-G080H	80 GRIT
821-G120H	120 GRIT
821-G180H	180 GRIT
821-G220H	220 GRIT
821-G240H	240 GRIT
821-G320H	320 GRIT

ILLUSTRATED PARTS BREAKDOWN

2-1/2" Standard



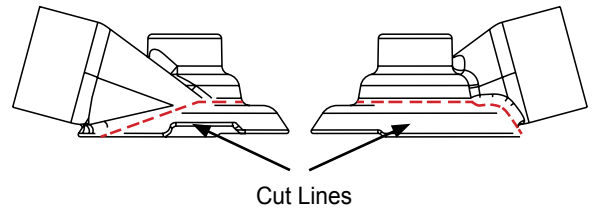
SEQ	ITEM NO	DESCRIPTION
1	672-024	Clear Rev 3In Jhook Mandrel, .250in
2	672-251J	Backup Pad 2-1/2in 6 Hole Jhook 1/4in Stud
3	673-M16C16	Swivel Coupler, 1in To 1in Hose
4	673-M16M	Swivel Connector, 1in Male
5	674-A10481	3in Composite Shroud Raw Part
6	921-1000WBKSC	1in Vac Hose Wire Supported Static Conductive
7	929-RR.250EX	Retaining Ring 1/4In External
*	672-0WR	Wrench For Shrouds

MANDREL OPTIONS

Shrouds with a 674- prefix are supplied with a 1/4inch mandrel to fit a 1/4inch collet.
Shrouds with a 774- prefix are supplied metric mandrels per the table below

ITEM NO SUFFIX	REPLACEMENT MANDREL	MANDREL SIZE	COLLET SIZE
-480S	672-024-480S	4.8MM SHORT	4.8MM
-480L	672-024-480L	4.8MM LONG	4.8MM
-495S	672-024-495S	4.95MM SHORT	4.95MM
-495L	672-024-495L	4.95MM LONG	4.95MM
-600S	672-024-600S	6MM SHORT	6MM
-600L	672-024-600L	6MM LONG	6MM

Clayton Clear Revolution shrouds are made of Lexan (polycarbonate). In some instances part of the shroud may be removed to allow access to tight areas. The diagrams below show the maximum permissible cut lines on each shroud. The shrouds may be cut using a band saw, dremel, or similar cutting tool. Remove the least amount of material possible. Cutting the shroud may reduce the ability of the shroud to collect dust. Once a shroud is altered, it is no longer returnable for refund or replacement.



ABRASIVES

The following Clayton abrasives are recommended for maximum dust collection. Additional grits and minerals are available.

HP 2-1/2 DISCS

ITEM NO	DESC
825-HP040HV	40 GRIT
825-HP060HV	60 GRIT
825-HP080HV	80 GRIT
825-HP120HV	120 GRIT
825-HP180HV	180 GRIT
825-HP240HV	240 GRIT
825-HP320HV	320 GRIT

LIMITED LIFETIME WARRANTY TERMS AND CONDITIONS

Warranty Terms

Clayton Associates, Inc. guarantees its manufactured products against defects in materials or workmanship and will either repair or replace all parts that prove defective under normal use during the lifetime of the products. The warranty period shall commence from the date of paid invoice.

This warranty does not cover (a) repairs due to normal wear, accident, neglect, misuse, or use other than as indicated in the instruction booklet (b) products manufactured by third parties and distributed by Clayton (c) wear items such as bearings, rotor blades, regulators, valve stems, levers, shrouds, guards, O-rings, seals, gaskets, motor brushes, and other wearable parts.

Repair within the Continental US

During the first 90 days of the warranty period, Clayton will provide parts and labor to the customer's site at no charge or pay freight costs associated with returning the products for repair to a Clayton selected service location and repair the product at no charge. Clayton personnel will determine the best way to repair the product.

Past 90 days, Clayton will provide parts to the customer's site at no charge or the customer may ship the product to a Clayton selected service location at customer's expense and Clayton will repair the product at no charge and provide return shipping.

Repair Outside the Continental US

Clayton will provide parts to the customer's site at no charge or the customer may ship the product to a Clayton selected service location at customer's expense and Clayton will repair the product at no charge and provide return shipping.

Limitation of Liability

Clayton shall not in any event be liable for any damages, loss of production time or profits, whether based on contract, warranty, negligence, strict liability or otherwise, including without limitation any consequential, incidental or special damages, arising with respect to the equipment or its failure to operate.

Clayton Associates, Inc. makes no other warranty or representation of any kind, except that of title, and all other warranties, express or implied, including warranties of merchantability or fitness for any particular purpose, are hereby expressly disclaimed.

EC DECLARATION OF CONFORMITY



Clayton Associates, Inc. of 1650 Oak Street, Lakewood New Jersey 08701 U.S.A. declare on our own responsibility that the interchangeable equipment

Clear Revolution JHook Shrouds

- Shroud Models **674-A1214J14, 674-A1216J14, 674-A1232J20, 674-A1248J40, 774-A1214J14xxx, 774-A1216J14xxx, 774-A1232J20xxx, 774-A1248J40xxx**
- Where xxx indicates the mandrel size
- When used in combination with a pneumatic hand-held power unit having a maximum rotation speed not exceeding 25,000 revolutions per minute, having an adjustable chuck or otherwise capable of securely holding a mandrel 3.2 - 6.35mm in diameter

Are designed and manufactured in compliance with the essential requirements and other relevant provisions of the following applicable directives:

- **Machinery Directive 2006/42/EC**

Compliance has been obtained by application of the following standards:

- **EN ISO 12100:2010-11**

The legally authorized entity, established in the EU for retaining compiling the technical file is ExVeritas Limited, Unit 16-18, Abenbury Way, Wrexham Industrial Estate, Wrexham, LL13 9UZ, United Kingdom.

File Number: 18FILE0423

Subject to use for the purpose for which it was designed in accordance with relevant standards and with the manufacturer's recommendations. We hereby declare that the equipment specified above conforms to the listed Directives and Standards.

Brad Clayton
President
Clayton Associates, Inc.

Place of Issue: Lakewood, New Jersey, USA November 23, 2018



Clayton products are proudly made in the USA

