

## Safety – Operation – Maintenance

Keep this document in a safe place

Read and understand this manual before operating your air tool



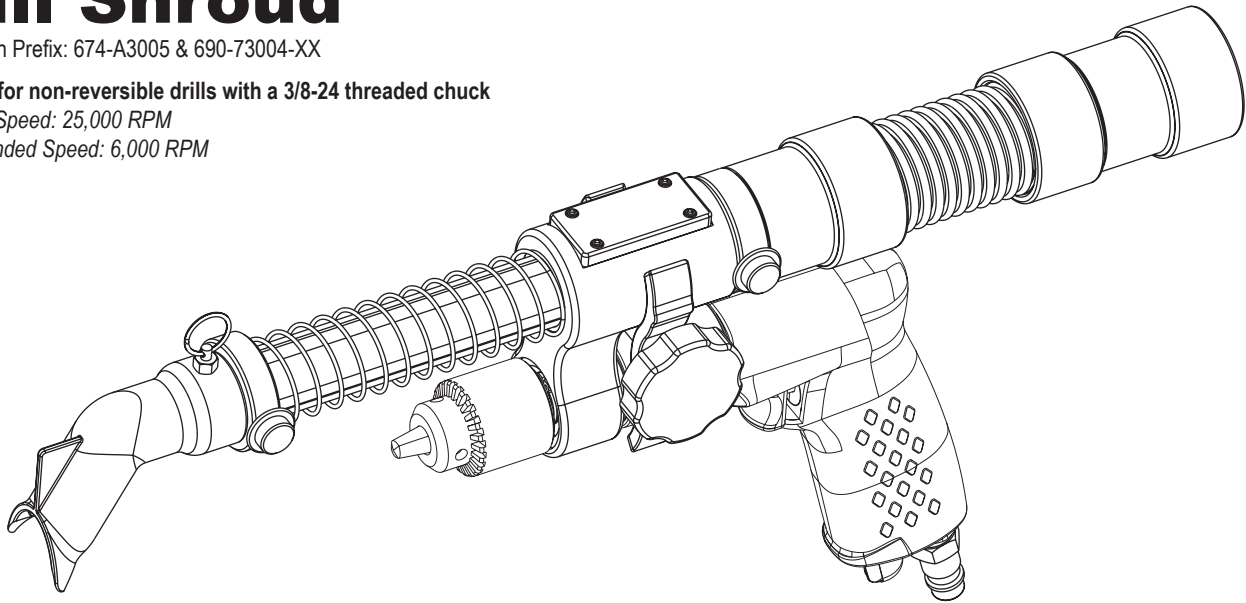
# Drill Shroud

Models with Prefix: 674-A3005 & 690-73004-XX

Designed for non-reversible drills with a 3/8-24 threaded chuck

Maximum Speed: 25,000 RPM

Recommended Speed: 6,000 RPM



## ⚠ WARNING

Follow all safety rules for the protection of operating personnel as well as adjacent areas. Always inspect and maintain this tool before use. Clayton Dust Collection Shrouds are designed for use with a variety of air tools. Please refer to the Air Tool Manufacturer's Documentation for Safety, Operations and Maintenance of all air tools used in conjunction with Clayton Dust Collection Shrouds.

### SAFETY LEGEND



#### ⚠ WARNING

Read and understand operator's manual before using this equipment.



#### ⚠ WARNING

Eye protection is required when operating this equipment.



#### ⚠ WARNING

Hearing protection is required when applicable PEL (permissible exposure limit) is exceeded.



#### ⚠ WARNING

Respiratory protection is required when applicable PEL (permissible exposure limit) is exceeded.

## ⚠ WARNING

Some dust created by sanding, grinding, drilling, and other construction activities contain chemicals known to cause cancer, birth defects or other reproductive harm. Some examples of these chemicals are:

- Lead from lead-based paints
- Crystalline silica from bricks and cement and other masonry products
- Chromium and other heavy metals from paint and primers

Your risk from these exposures varies, depending on how often you do this type of work. To reduce your exposure to these chemicals: work in a well ventilated area, and work with approved safety equipment, such as dust masks that are specially designed to filter out microscopic particles.

Clayton Dust Collection Shrouds aid in the collection of airborne dust and debris, but the level of collection is dependent upon the performance of the vacuum to which it is connected, the speed of the air tool used, and the way in which a tool is handled by the user. Do not assume that the Dust Collection Shroud is collecting 100% of the dust.

Please refer to the Air Tool Manufacturer's Documentation for Safety, Operations, and Maintenance of all air tools in conjunction with Clayton Dust Collection Shrouds.

Carefully read all instructions before operating any Clayton Dust Collection Shroud.

Products offered by Clayton should not be modified, converted or otherwise altered from the original design without express written consent from Clayton Associates, Inc.

### Tool Intent

Clayton Dust Collection Shrouds are designed for use with a variety of air tools and provide dust collection during operations such as grinding, deburring, blending and polishing operations on materials such as, plastic, fiberglass, composites, rubber, glass and stone. Please refer to the air tool manufacturer's documentation for Tool Intent of all air tools used in conjunction with Clayton Dust Collection Shrouds.

**Do not use this tool for anything other than its intended applications.**

**This tool is not intended for use in potentially explosive atmospheres and is not insulated against contact with electrical power.**

**Clayton Dust Collection Shrouds are not designed to replace manufacturer installed safety guards and shields.**

**Never remove the factory installed safety devices from air tools used in conjunction with Clayton Dust Collection Shrouds.**

### Collection Efficiency

Clayton Dust Collection Shrouds are very effective in limiting worker exposure to airborne dust and debris. The level of collection is dependent upon the performance of the vacuum to which it is connected, the speed of the air tool used and the way in which a tool is handled by the user. Do not assume that the Dust Collection Shroud is collecting 100% of the dust.

### Training

It is the tool owner's responsibility to train all operators in the safe use of this tool and its accessories.

### Accessories

- Do not use abrasives, pad holders, or other accessories that exceed the speed rating of this Dust Collection Shroud
- Do not use an air tool that exceeds the speed rating of this Dust Collection Shroud
- Do not use abrasives or pad holders that exceed the size rating of this Dust Collection Shroud
- Never replace the mandrels on Clayton Dust Collection Shrouds with other commercially available mandrels. Mandrels included with the shrouds have been engineered and balanced specifically for this application
- Before mounting accessories, visually inspect for defects. Do not use defective accessories
- Follow tool specifications before choosing size and type of accessory

### WARNING

Always wear eye protection. Operator of tool is responsible for following: eye, face, respiratory, hearing and body protection.

### CAUTION

Hand, wrist and arm injury may result from repetitive work, motion and overexposure to vibration.

- Keep hand and clothing away from working end of the tool
- Be sure that any loose clothing, hair and all jewelry is properly restrained

### CAUTION

Never exceed the maximum shroud, abrasive, or pad holder RPM rating.

- Disconnect air hose from tool when changing abrasives, removing the shroud, or otherwise handling the working end of the tool

### CAUTION

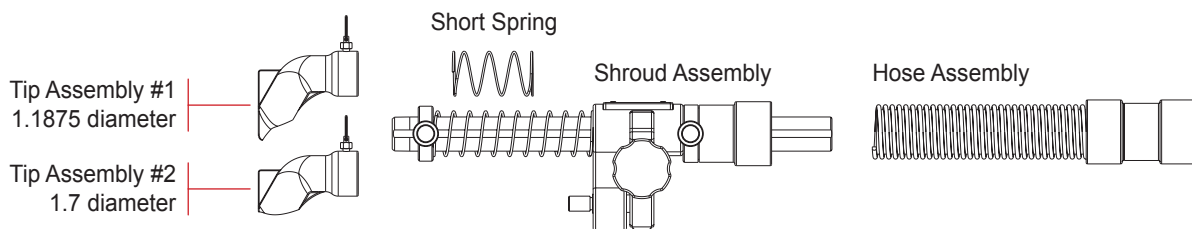
**DO NOT USE** if tool vibration is excessive. Correct cause, and retest to ensure safe operation

- Make sure that work area is uncluttered, and others are at a safe range from the tools and debris
- Use a vise or clamping device to hold work piece firmly in place
- Do not apply excessive force on tool or apply "rough" treatment to it
- Potentially explosive atmospheres can be caused by dust and fumes resulting from sanding or grinding. Always use dust extraction or suppression systems which are suitable for the material being processed
- Use only the proper size and style abrasive for the shroud, pad holder, and mandrel
- Oversized or improper abrasives may contact the shroud and cause premature wear or failure

**What's Included:**

The Drill Shroud is shipped in 5 pieces. The Shroud Assembly, 2 Tip Assemblies, a Short Spring, and Hose Assembly shown below.

**Note:** Some models may include a drill already mounted to the Shroud Assembly.

**Mounting The Drill:**

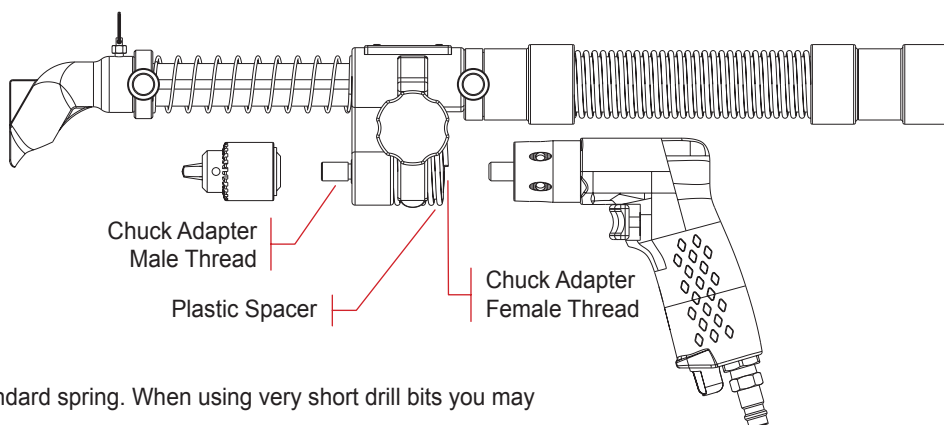
Always disconnect the tool from power before connecting or disconnecting the Dust Collection Shroud from any tool.

The Drill Shroud will mount to non-reversible drills that have a 3/8-24 threaded chuck.

- Remove the black plastic disposable spacer from between the Shroud Clamps and discard
- Follow the manufacturer's instructions to remove the chuck from your drill
- Thread the drill chuck onto the male threaded side of the chuck adapter
- Thread the drill spindle into the female threaded side of the chuck adapter
- Tighten the assembly

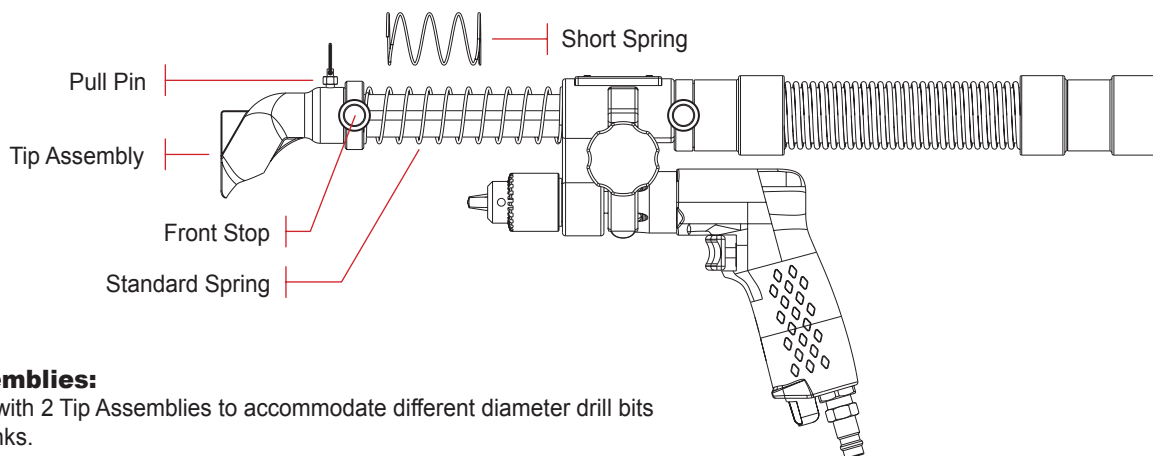
**Hose Length:**

The vacuum hose included with the tool may be shortened to suit your particular needs. The hose can be easily cut to the desired length with a knife or hose cutting tools. Follow all safety instructions provided with cutting tools to prevent injury.

**Switching Springs:**

The Drill Shroud comes assembled with a standard spring. When using very short drill bits you may need to use the short spring, included.

- Remove the Tip Assembly by retracting the Pull Pin and sliding the Tip Assembly off the Drill Tube
- Loosen the thumb screw on the Front Stop and slide it off the Drill Tube
- Remove the current spring and replace with the desired spring
- Reassemble

**Switching Tip Assemblies:**

The Drill Shroud comes with 2 Tip Assemblies to accommodate different diameter drill bits and microstop countersinks.

- Remove the Tip Assembly by retracting the Pull Pin and sliding the Tip Assembly off the Drill Tube
- Align the Tip Assembly with the Drill Tube so that the Pull Pin will engage the hole in the Drill Tube
- Retract the Pull Pin on the desired Tip Assembly and slide onto the Drill Tube

**Important:**

A Preventative Maintenance Program is recommended whenever portable power tools are used.

**Routine Maintenance:**

- Use only genuine Clayton replacement parts to ensure quality
- Clean the tool with a damp cloth. Do not use petroleum based cleaners
- Visually inspect shafts, bearings, pad holders, and abrasives for frays, visible damage and signs of deterioration. Replace damaged or worn components before use

**Handling and Storage:**

- Use of tool rests, hangers and/or balancers is recommended
- Protect abrasive from exposure to water, solvents, high humidity, freezing temperature and extreme temperature changes
- Store Dust Collection Shrouds in protective racks or compartments to prevent damage

**Warranty & Repair:**

This tool is covered by a 1 year manufacturer's warranty. Wear items such as bearings and pad holders are not covered.

## TROUBLE SHOOTING

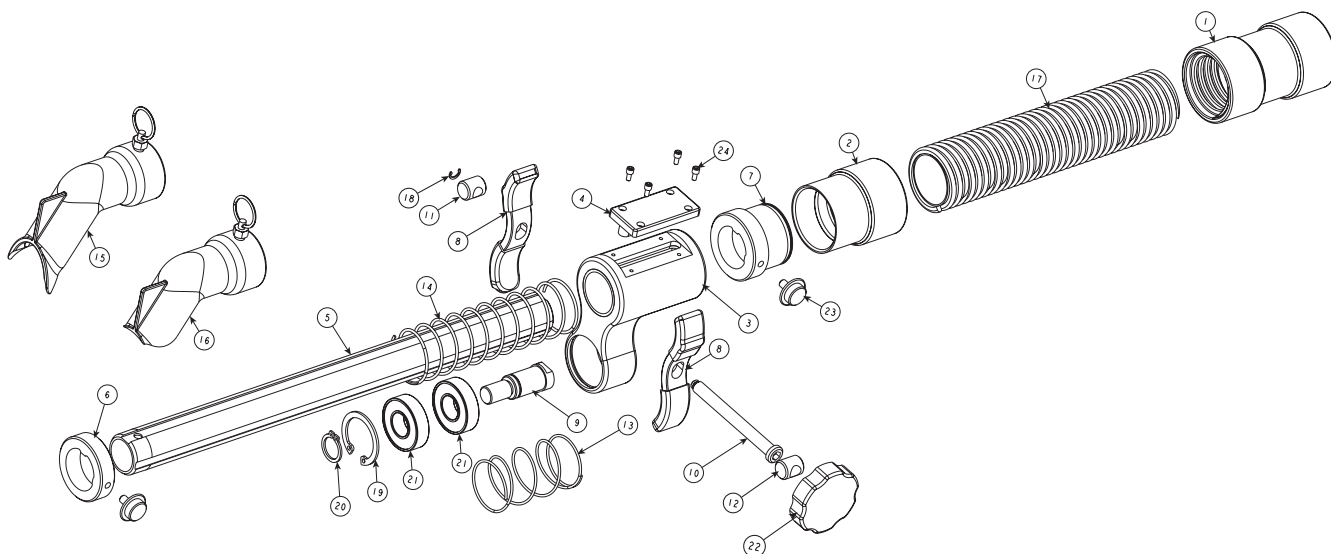
**Excessive Vibration Is Felt During Tool Use**

- Shroud may be damaged or bent – stop using tool immediately, identify cause and correct

**Excessive Dust Is Evident During Operation**

- Clayton Dust Collection Shrouds reduce airborne (respirable) dust. You may see some larger debris not being collected that may require vacuuming at the end of grinding operations. This is normal.
- Vacuum may be turned off, or vacuum filters may be clogged – check vacuum to ensure that it is operating properly, and that filters are clean
- Hose or shroud may be blocked – disconnect all hose fittings, and ensure that the pathway from shroud to vacuum port is clear

## ILLUSTRATED PARTS BREAKDOWN



#	ITEM NO	DESC
1	673-M16C16	1IN X 1IN SWIVEL
2	673-M16F	FEMALE SWIVEL
3	674-3004-01	DRILL SHROUD FRAME
4	674-3004-02	DRILL SHROUD TRACK
5	674-3004-03	DRILL SHROUD TUBE
6	674-3004-04	DEPTH STOP FRONT
7	674-3004-05	DEPTH STOP REAR
8	674-3004-07	DRILL SHROUD CLAMP

#	ITEM NO	DESC
9	674-3004-08	CHUCK ADAPTER
10	674-3004-12	THREADED CLAMP
11	674-3004-13	DOWEL NUT
12	674-3004-14	SPACER
13	674-3004-15	SPRING – SHORT
14	674-3004-23	SPRING – LONG
15	674-3004-C1875	TIP ASSEMBLY 1.1875
16	674-3004-C7000	TIP ASSEMBLY 1.7000

#	ITEM NO	DESC
17	921-1000PBKSC	1IN VACUUM HOSE
18	929-RR-0.1875EX	SNAP RING 3/16IN EX
19	929-RR-1.125IN	SNAP RING 1-1/8 INT
20	929-RR.50EX	SNAP RING 1/2IN EX
21	931-0818ZZ-26K	BEARING
22	941-KN0424	THUMB SCREW CAP
23	941-TS0832-06P	THUMB SCREW RED
24	SE025603-ACSM-A	SCREW 2-56 X 3/16