

## Safety – Operation – Maintenance

Keep this document in a safe place

Read and understand this manual before operating your air tool

**CLAYTON**  
Dustless Made Simple™

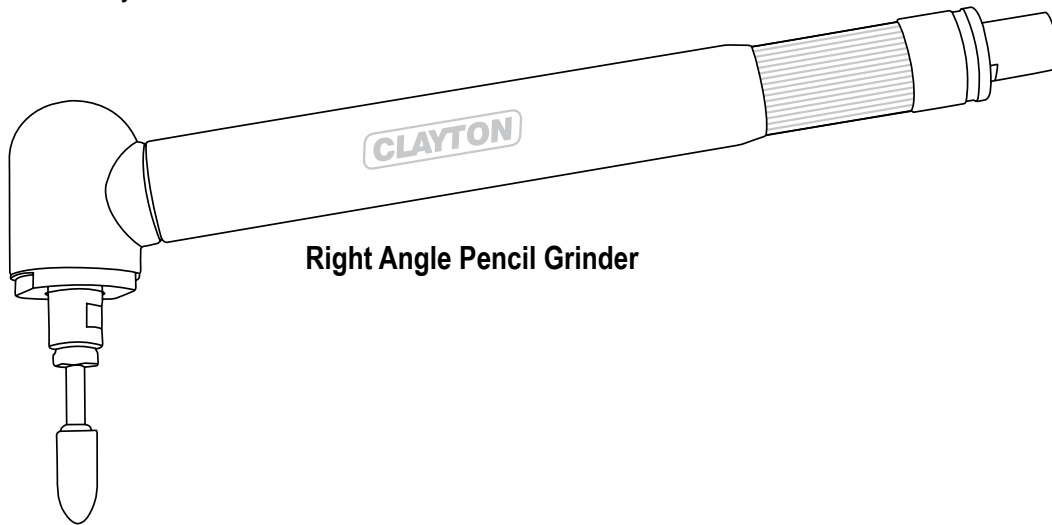
# Pencil Grinder

Models 690-PG70KR-KIT, 690-PGSR-01, 674-PGSR-01

CE



Scan this QR code for  
online instructions and  
documentation, or visit  
[www.ClaytonHowTo.com](http://www.ClaytonHowTo.com)



Right Angle Pencil Grinder

## ⚠ WARNING

Follow all safety rules for the protection of operating personnel as well as adjacent areas. Always inspect and maintain this tool before use. Clayton Dust Collection Shrouds are designed for use with a variety of air tools. Please refer to the Air Tool Manufacturer's Documentation for Safety, Operations and Maintenance of all air tools used in conjunction with Clayton Dust Collection Shrouds.

### SAFETY LEGEND



#### ⚠ WARNING

Read and understand operator's manual before using this equipment.



#### ⚠ WARNING

Eye protection is required when operating this equipment.



#### ⚠ WARNING

Hearing protection is recommended when operating this equipment.



#### ⚠ WARNING

Respiratory protection is recommended when operating this equipment.

## ⚠ WARNING

Some dust created by sanding, grinding, drilling, and other construction activities contain chemicals known to cause cancer, birth defects or other reproductive harm. Some examples of these chemicals are:

- Lead from lead-based paints
- Crystalline silica from bricks and cement and other masonry products
- Chromium and other heavy metals from paint and primers

Your risk from these exposures varies, depending on how often you do this type of work. To reduce your exposure to these chemicals: work in a well ventilated area, and work with approved safety equipment, such as dust masks that are specially designed to filter out microscopic particles.

June 2025

## SAFETY INSTRUCTIONS

Carefully read all instructions before operating any Tool.

Products offered by Clayton should not be modified, converted or otherwise altered from the original design without express written consent from Clayton Associates, Inc.

Do not use this tool for anything other than its intended applications.

This tool is not intended for use in potentially explosive atmospheres and is not insulated against contact with electrical power.

### Accessories & Bits

- Before mounting accessories, visually inspect for defects. Do not use defective accessories.
- Follow tool specifications before choosing size and type of accessory

### WARNING

- Always wear eye protection. Operator of tool is responsible for following: eye, face, respiratory, hearing and body protection.

### CAUTION

- Hand, wrist and arm injury may result from repetitive work, motion and overexposure to vibration.
- Keep hand and clothing away from working end of the tool
- Be sure that any loose clothing, hair and all jewelry is properly restrained

### CAUTION

- Disconnect air hose from tool when changing bits or otherwise handling the working end of the tool

### CAUTION

- Make sure that work area is uncluttered, and others are at a safe range from the tools and debris
- Use a vise or clamping device to hold work piece firmly in place
- Do not apply excessive force on tool or apply "rough" treatment to it
- Potentially explosive atmospheres can be caused by dust and fumes resulting from sanding or grinding. Always use dust extraction or suppression systems which are suitable for the material being processed

## MAINTENANCE INSTRUCTIONS

### Important

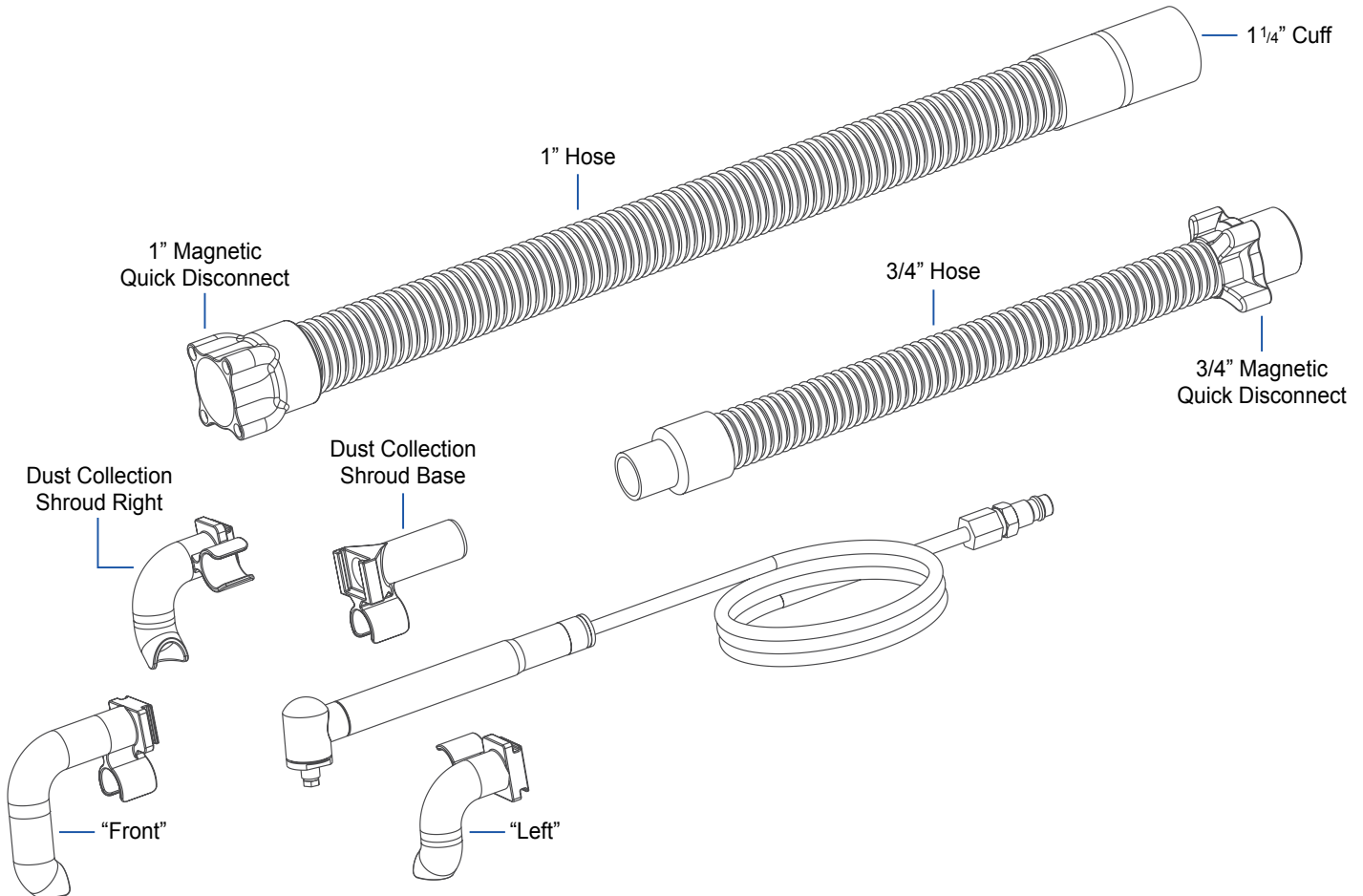
A Preventative Maintenance Program is recommended whenever portable power tools are used.

### Routine Maintenance

- Use only genuine Clayton replacement parts to ensure quality
- Clean the tool with a damp cloth. Do not use petroleum based cleaners
- Visually inspect for visible damage and signs of deterioration. Replace damaged or worn components before use
- Apply 2 drops of air tool oil every 8 hours of use

## WHAT'S IN THE BOX

1. Remove and identify the tool and accessories included in the box.
2. Visually inspect tool to guarantee that no parts are missing or damaged.
3. Familiarize yourself with the tool.



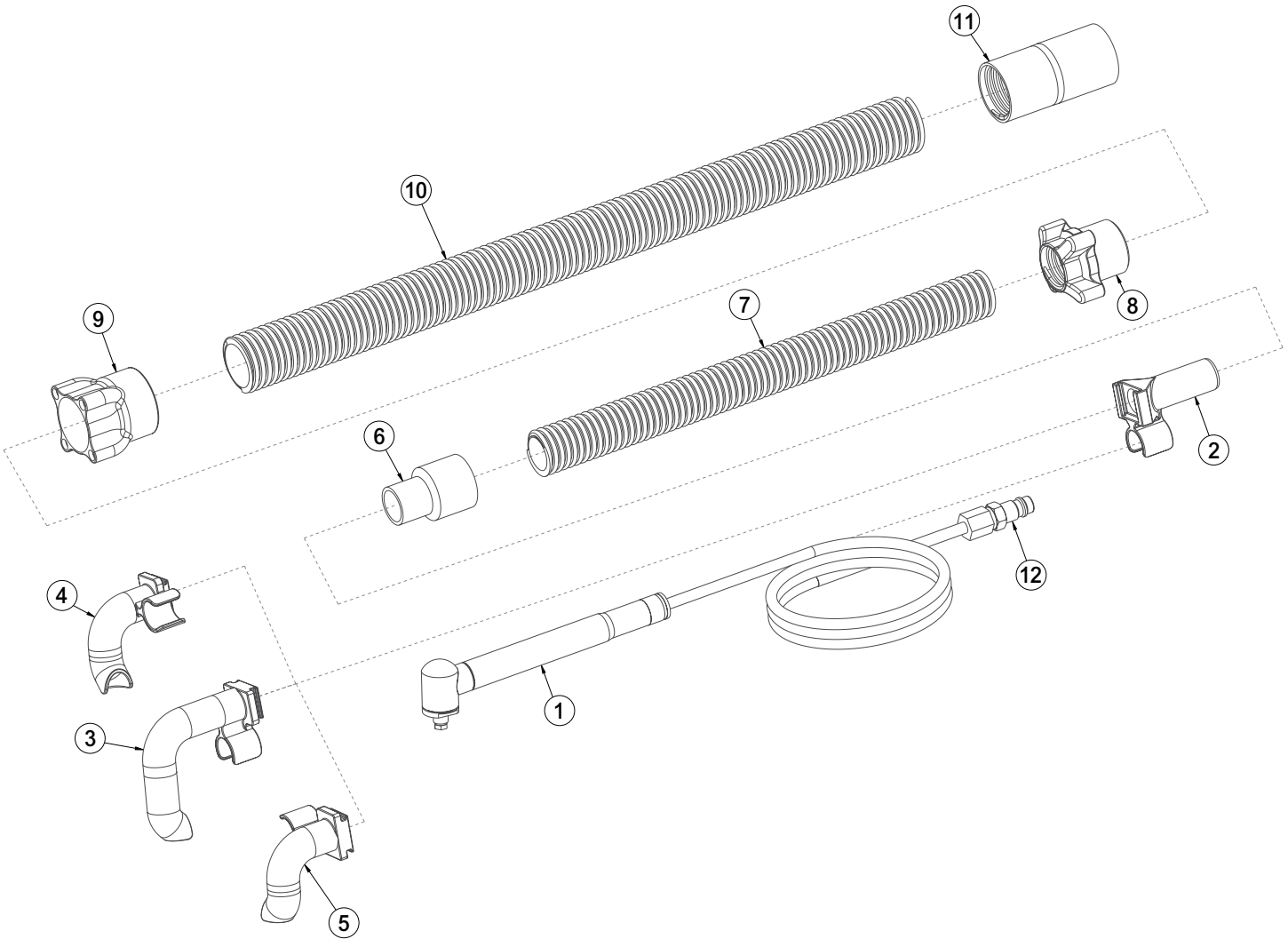
## SPECIFICATIONS & REQUIREMENTS

Consumption .....	20 cfm @ 90 psi
Speed .....	56k rpm
Chuck .....	1/8"
Weight .....	10.2oz
Length.....	6.94"

## ILLUSTRATED PARTS BREAKDOWN

### 690-PG70KR-KIT

Seq	Item No	Description
Seq	Item No	Description
1	690-SM-70KR	Pencil Grinder Right Angle 70K rpm Kit DNQ
2	674-3010A	Clip on Drill Shroud Base only Carbon Fiber
3	674-3022F	Clip on Pencil Grinder RA Shroud Front Clip Carbon Fiber Raw Part
4	674-3022R	Clip on Pencil Grinder RA Shroud Right Clip Carbon Fiber Raw Part
5	674-3022L	Clip on Pencil Grinder RA Shroud Left Clip Carbon Fiber Raw Part
6	921-1212HTSC	Hose Cuff 3/4in hose to 3/4in tool static
7	921-0750PBKSC	Vacuum Hose 3/4in Conductive, Black, per foot
8	673-Q12M	Magnetic Quick Connect Male (3/4in FHT Tool Side)
9	673-Q16F	Magnetic Quick Connect Female (1in FHT Hose Side)
10	921-1000PBKSC	Vacuum Hose 1in Conductive per foot
11	921-1620HTSC	HOSE CUFF, 1.0 HOSE TO 1.25 TOOL, STATIC
12	940-016	Fitting Plug 1/4in HiFlow x 1/4in MNPT



## LIMITED LIFETIME WARRANTY TERMS AND CONDITIONS

### Warranty Terms

Clayton Associates, Inc. guarantees its manufactured products against defects in materials or workmanship and will either repair or replace all parts that prove defective under normal use during the lifetime of the products. The warranty period shall commence from the date of paid invoice.

This warranty does not cover (a) repairs due to normal wear, accident, neglect, misuse, or use other than as indicated in the instruction booklet (b) products manufactured by third parties and distributed by Clayton (c) wear items such as bearings, rotor blades, regulators, valve stems, levers, shrouds, guards, O-rings, seals, gaskets, motor brushes, and other wearable parts.

### Repair within the Continental US

During the first 90 days of the warranty period, Clayton will provide parts and labor to the customer's site at no charge or pay freight costs associated with returning the products for repair to a Clayton selected service location and repair the product at no charge. Clayton personnel will determine the best way to repair the product.

Past 90 days, Clayton will provide parts to the customer's site at no charge or the customer may ship the product to a Clayton selected service location at customer's expense and Clayton will repair the product at no charge and provide return shipping.

### Repair Outside the Continental US

Clayton will provide parts to the customer's site at no charge or the customer may ship the product to a Clayton selected service location at customer's expense and Clayton will repair the product at no charge and provide return shipping.

### Limitation of Liability

Clayton shall not in any event be liable for any damages, loss of production time or profits, whether based on contract, warranty, negligence, strict liability or otherwise, including without limitation any consequential, incidental or special damages, arising with respect to the equipment or its failure to operate.

Clayton Associates, Inc. makes no other warranty or representation of any kind, except that of title, and all other warranties, express or implied, including warranties of merchantability or fitness for any particular purpose, are hereby expressly disclaimed.

## EC DECLARATION OF CONFORMITY



Clayton Associates, Inc. of 1650 Oak Street, Lakewood New Jersey 08701 U.S.A. declare on our own responsibility that the interchangeable equipment,

### Pencil Grinders and Pencil Grinder Shrouds

- Models **690-PG70KR-KIT, 690-PGSR-01, 674-PGSR-01**

**Technical Data: Free Speed : 70,000 RPM**

**Collet Size : 3mm or 1/8"**

**Air Pressure : 90 psi (6.2 bar)**

**Air Consumption : 1.5 CFM**

Are designed and manufactured in compliance with the essential requirements and other relevant provisions of the following applicable directives:

- **Machinery Directive 2006/42/EC**

Compliance has been obtained by application of the following standards:

- **EN ISO 12100:2010 / Safety of machinery — General principles for design — Risk assessment and risk reduction (ISO 12100:2010)**
- **EN ISO 11148-9:2011 / Hand-held non-electric power tools - Safety requirements - Part 9: Die grinders (ISO 11148-9:2011)**
- **EN ISO 28927-12:2012 / Hand-held portable power tools — Test methods for evaluation of vibration emission — Part 12: Die grinders (ISO 28927-12:2012)**  
**Vibration Level : 2.66 m/s<sup>2</sup> , the uncertainty, K= 0.76 m/s<sup>2</sup>**
- **EN ISO 15744:2008 / Hand-held non-electric power tools - Noise measurement code - Engineering method (grade 2) (ISO 15744:2002)**

**Sound Pressure : 84 dBA**

**Sound Power : 95 dBA**

The legally authorized entity, established in the EU for retaining compiling the technical file is ExVeritas Limited, Unit 16-18, Abenbury Way, Wrexham Industrial Estate, Wrexham, LL13 9UZ, United Kingdom.

**File Number: 18FILE0423**

Subject to use for the purpose for which it was designed in accordance with relevant standards and with the manufacturer's recommendations. We hereby declare that the equipment specified above conforms to the listed Directives and Standards.

Brad Clayton

President

Clayton Associates, Inc.

Place of Issue: Lakewood, New Jersey, USA November 23, 2018





**Clayton products are proudly made in the USA**

