

## Safety – Operation – Maintenance

Keep this document in a safe place

Read and understand this manual before operating your air tool



# Belt Sander Shroud for Dotco



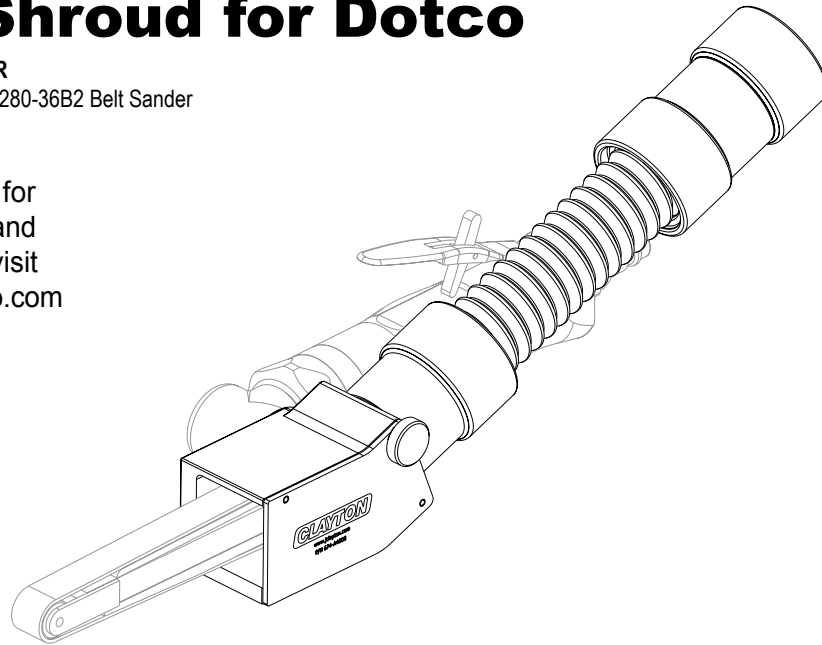
Shroud Models: 674-A4008 and 674-A4008-02R

Designed for 1/2" abrasive belts on a Dotco 12LF280-36B2 Belt Sander

Recommended Speed: 12,000 RPM



Scan this QR code for online instructions and documentation, or visit [www.ClaytonHowTo.com](http://www.ClaytonHowTo.com)



## ⚠ WARNING

Follow all safety rules for the protection of operating personnel as well as adjacent areas. Always inspect and maintain this tool before use. Clayton Dust Collection Shrouds are designed for use with a variety of air tools. Please refer to the Air Tool Manufacturer's Documentation for Safety, Operations and Maintenance of all air tools used in conjunction with Clayton Dust Collection Shrouds.

### SAFETY LEGEND



#### ⚠ WARNING

Read and understand operator's manual before using this equipment.



#### ⚠ WARNING

Eye protection is required when operating this equipment.



#### ⚠ WARNING

Hearing protection is recommended when operating this equipment.



#### ⚠ WARNING

Respiratory protection is recommended when operating this equipment.

## ⚠ WARNING

Some dust created by sanding, grinding, drilling, and other construction activities contain chemicals known to cause cancer, birth defects or other reproductive harm. Some examples of these chemicals are:

- Lead from lead-based paints
- Crystalline silica from bricks and cement and other masonry products
- Chromium and other heavy metals from paint and primers

Your risk from these exposures varies, depending on how often you do this type of work. To reduce your exposure to these chemicals: work in a well ventilated area, and work with approved safety equipment, such as dust masks that are specially designed to filter out microscopic particles.

Clayton Dust Collection Shrouds aid in the collection of airborne dust and debris, but the level of collection is dependent upon the performance of the vacuum to which it is connected, the speed of the air tool used, and the way in which a tool is handled by the user. Do not assume that the Dust Collection Shroud is collecting 100% of the dust.

# SAFETY INSTRUCTIONS

Please refer to the Air Tool Manufacturer's Documentation for Safety, Operations, and Maintenance of all air tools in conjunction with Clayton Dust Collection Shrouds.

Carefully read all instructions before operating any Clayton Dust Collection Shroud.

Products offered by Clayton should not be modified, converted or otherwise altered from the original design without express written consent from Clayton Associates, Inc.

## Tool Intent

Clayton Dust Collection Shrouds are designed for use with a variety of air tools and provide dust collection during operations such as grinding, deburring, blending and polishing operations on materials such as meta, plastic, fiberglass, composites, rubber, glass and stone. Please refer to the air tool manufacturer's documentation for Tool Intent of all air tools used in conjunction with Clayton Dust Collection Shrouds.

**Do not use this tool for anything other than its intended applications.**

**This tool is not intended for use in potentially explosive atmospheres and is not insulated against contact with electrical power.**

## WARNING

Always wear eye protection. Operator of tool is responsible for following: eye, face, respiratory, hearing and body protection.

## CAUTION

Hand, wrist and arm injury may result from repetitive work, motion and overexposure to vibration.

- Keep hand and clothing away from working end of the tool
- Be sure that any loose clothing, hair and all jewelry is properly restrained

## CAUTION

Never exceed the maximum shroud, abrasive, or pad holder RPM rating.

- Disconnect air hose from tool when changing abrasives, removing the shroud, or otherwise handling the working end of the tool

## CAUTION

**DO NOT USE** if tool vibration is excessive. Correct cause, and retest to ensure safe operation

- Make sure that work area is uncluttered, and others are at a safe range from the tools and debris
- Use a vise or clamping device to hold work piece firmly in place
- Do not apply excessive force on tool or apply "rough" treatment to it
- Potentially explosive atmospheres can be caused by dust and fumes resulting from sanding or grinding. Always use dust extraction or suppression systems which are suitable for the material being processed
- Use only the proper size and style abrasive for the shroud, pad holder, and mandrel
- Oversized or improper abrasives may contact the shroud and cause premature wear or failure

## GETTING STARTED

### Hose Length

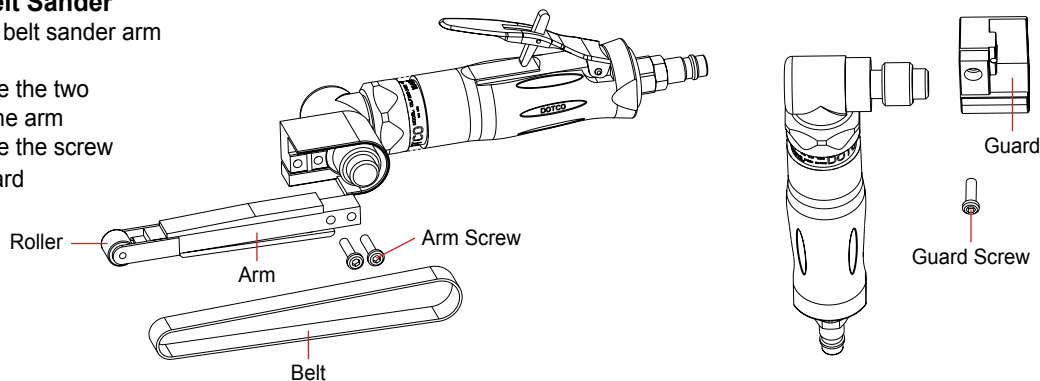
The vacuum hose included with the tool may be shortened to suit your particular needs. The hose can be easily cut to the desired length with a knife or hose cutting tools. Follow all safety instructions provided with cutting tools to prevent injury.

### Connecting the Shroud

**Always disconnect the tool from power before connecting or disconnecting the Dust Collection Shroud.**

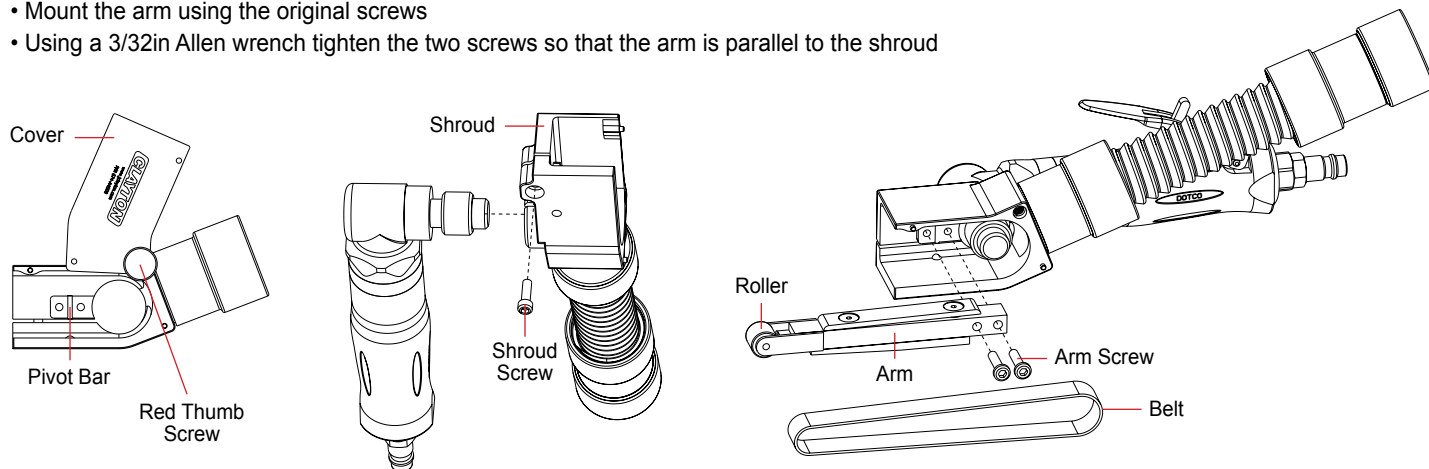
#### Remove the Guard from the Belt Sander

- Depress the roller at the end of the belt sander arm and slip the abrasive belt off
- Using a 3/32in Allen wrench remove the two screws from the arm and remove the arm
- Using a 5/32in Allen wrench remove the screw from the guard and remove the guard



#### Mount the Shroud

- Loosening the red thumb screw to remove the cover from the shroud
- Using a 5/32in Allen wrench loosen the on the shroud
- Slide the shroud onto the grinder
- Using a 9/64in Allen Wrench tighten the shroud on the belt sander until it does not rotate freely
- Mount the arm using the original screws
- Using a 3/32in Allen wrench tighten the two screws so that the arm is parallel to the shroud



#### Mount the Abrasive Belt

- Note the rotation direction on the inside of the abrasive belt
- Place the inside of the belt on the arm wheel
- Depress the wheel at the end of the arm with the belt and loop the belt over the drive wheel
- Replace the shroud cover and tighten the red thumb screw

#### Test the Belt Alignment

- Connect the belt sander to compressed air and run the belt slowly
- If the belt does not run true, see the belt alignment section below

#### Belt Alignment

- Unscrew the red thumb screw to remove the shroud cover
- The arm pivots on a bar between the two belt alignment screws
- Using a 3/32in allen wrench Loosen one screw and tighten the other to pivot the arm in the desired direction
- Tighten the two screws
- Repeat the belt alignment test until the belt runs true

## GETTING STARTED

### Attaching Abrasives

Always disconnect the tool from power before changing abrasives.

#### Remove the Abrasive Belt

- Loosening the red thumb screw, lift the shroud cover off the shroud, and rotate out of the way
- Depress the wheel at the end of the arm and slip the abrasive off the arm

#### Mount the Abrasive Belt

- Note the rotation direction on the inside of the abrasive belt
- Place the inside of the belt on the wheel at the end of the arm
- Depress the wheel at the end of the arm with the belt and loop the belt over the drive wheel
- Replace the shroud cover and tighten the red thumb screw

#### Test the Belt Alignment

- Connect the belt sander to compressed air and run the belt slowly
- If the belt does not run true, see the belt alignment section below

#### Belt Alignment

- Loosening the red thumb screw, lift the shroud cover off the shroud, and rotate out of the way
- The arm pivots on a bar between the two belt alignment screws
- Using a 3/32in Allen wrench Loosen one screw and tighten the other to pivot the arm in the desired direction
- Tighten the two screws
- Repeat the belt alignment test until the belt runs true

## MAINTENANCE INSTRUCTIONS

### Important

A Preventative Maintenance Program is recommended whenever portable power tools are used.

### Routine Maintenance

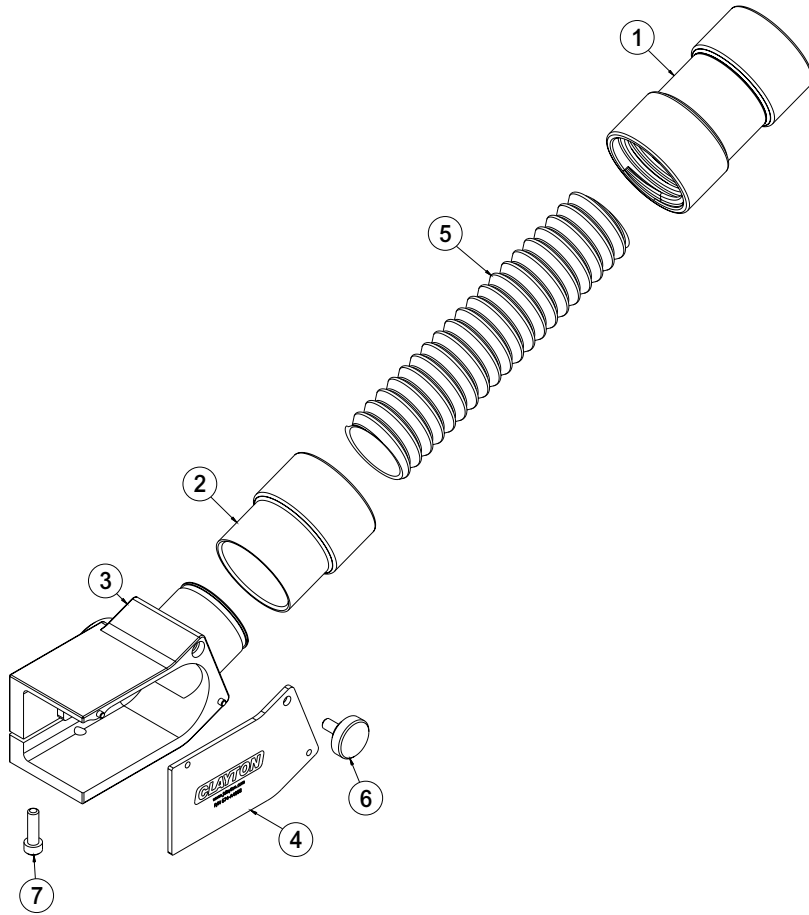
- Use only genuine Clayton replacement parts to ensure quality
- Clean the tool with a damp cloth. Do not use petroleum based cleaners

## TROUBLE SHOOTING

### Excessive dust is evident during operation

- Clayton Dust Collection Shrouds reduce airborne (respirable) dust. You may see some larger debris not being collected that may require vacuuming at the end of grinding operations. This is normal
- Vacuum may be turned off, or vacuum filters may be clogged – check vacuum to ensure that it is operating properly, and that filters are clean
- Hose or shroud may be blocked – disconnect all hose fittings, and ensure that the pathway from shroud to vacuum port is aluminum
- Abrasive grit may be too coarse. On softer materials, coarse abrasives may generate overwhelming amounts of dust – switch to a finer grit abrasive, and or use a slower speed tool

## ILLUSTRATED PARTS BREAKDOWN



### BELT SANDER

SEQ	ITEM NO	DESCRIPTION
1	673-M16C16	Swivel Coupler, 1" To 1" Hose
2	673-M16F	Swivel Connector, 1", Female
3	674-4008-01	Belt Sander Shroud Body
4	674-4008-02	Belt Sander Shroud Cover
5	921-1000WBKSC	1In Vac Hose Wire Supported Static Conductive
6	941-CTS1032-07	Captive Thumb Screw 10-32 X 7/16, Red Cap
7	SE083209-ACSM-Z	8-32 X 9/16 Socket Head Cap Screw

## ABRASIVES

The following Clayton abrasives are recommended for maximum dust collection.

### ABRASIVE BELTS

ITEM NO	GRIT
805-0812-024	24
805-0812-036	36
805-0812-040	40
805-0812-060	60
805-0812-080	80
805-0812-100	100
805-0812-120	120
805-0812-150	150
805-0812-180	180
805-0812-220	220
805-0812-240	240
805-0812-320	320
805-0812-320	320

## LIMITED LIFETIME WARRANTY TERMS AND CONDITIONS

### Warranty Terms

Clayton Associates, Inc. guarantees its manufactured products against defects in materials or workmanship and will either repair or replace all parts that prove defective under normal use during the lifetime of the products. The warranty period shall commence from the date of paid invoice.

This warranty does not cover (a) repairs due to normal wear, accident, neglect, misuse, or use other than as indicated in the instruction booklet (b) products manufactured by third parties and distributed by Clayton (c) wear items such as bearings, rotor blades, regulators, valve stems, levers, shrouds, guards, O-rings, seals, gaskets, motor brushes, and other wearable parts.

### Repair within the Continental US

During the first 90 days of the warranty period, Clayton will provide parts and labor to the customer's site at no charge or pay freight costs associated with returning the products for repair to a Clayton selected service location and repair the product at no charge. Clayton personnel will determine the best way to repair the product.

Past 90 days, Clayton will provide parts to the customer's site at no charge or the customer may ship the product to a Clayton selected service location at customer's expense and Clayton will repair the product at no charge and provide return shipping.

### Repair Outside the Continental US

Clayton will provide parts to the customer's site at no charge or the customer may ship the product to a Clayton selected service location at customer's expense and Clayton will repair the product at no charge and provide return shipping.

### Limitation of Liability

Clayton shall not in any event be liable for any damages, loss of production time or profits, whether based on contract, warranty, negligence, strict liability or otherwise, including without limitation any consequential, incidental or special damages, arising with respect to the equipment or its failure to operate.

Clayton Associates, Inc. makes no other warranty or representation of any kind, except that of title, and all other warranties, express or implied, including warranties of merchantability or fitness for any particular purpose, are hereby expressly disclaimed.

---

## EC DECLARATION OF CONFORMITY

---



Clayton Associates, Inc. of 1650 Oak Street, Lakewood New Jersey 08701 U.S.A. declare on our own responsibility that the interchangeable equipment,

### **Belt Sander Shroud**

- Shroud Model **674-A4008**
- When used only in combination with Belt Sander Model **Dotco 12LF280-36B2**
- Having a maximum rotation speed not exceeding 12,000 revolutions per minute,

Are designed and manufactured in compliance with the essential requirements and other relevant provisions of the following applicable directives:

- **Machinery Directive 2006/42/EC**

Compliance has been obtained by application of the following standards:

- **EN ISO 12100:2010-11**

The legally authorized entity, established in the EU for retaining compiling the technical file is ExVeritas Limited, Unit 16-18, Abenbury Way, Wrexham Industrial Estate, Wrexham, LL13 9UZ, United Kingdom.

**File Number: 18FILE0423**

Subject to use for the purpose for which it was designed in accordance with relevant standards and with the manufacturer's recommendations. We hereby declare that the equipment specified above conforms to the listed Directives and Standards.

Brad Clayton  
President  
Clayton Associates, Inc.

Place of Issue: Lakewood, New Jersey, USA November 23, 2018



**Product Manual**  
**45-8452EN**  
12/28/2015

**DOTCO<sup>®</sup>**

**10LF and 12LF Series**  
**Right Angle Grinder and Sander**



*For additional product information visit our website at <http://www.apextoolgroup.com>*

**Dotco®**  
Nomenclature

	<b>XX</b>	<b>L</b>	<b>F</b>	<b>2</b>	<b>XX</b>	<b>-</b>	<b>XX</b>	<b>XX</b>	<b>XX</b>						
<p><u>Tool Series</u></p> <p><b>10</b> = Aluminum Housing <b>12</b> = Ergo Housing</p> <p><u>Throttle Type</u></p> <p><b>L</b> = Locking Lever</p> <p><u>Motor Size</u></p> <p><b>F</b> = 0.4 hp</p> <p><u>Handle Style</u></p> <p><b>2</b> = Right Angle</p> <p><u>Speed Options (RPM)</u></p> <table border="0"> <tr> <td><b>Front Exhaust</b></td> <td><b>Rear Exhaust</b></td> </tr> <tr> <td><b>00</b> = 12,000</td> <td><b>80</b> = 12,000</td> </tr> <tr> <td><b>01</b> = 20,000</td> <td><b>81</b> = 20,000</td> </tr> </table> <p><u>Primary Termination Code</u></p> <p><b>32</b> = 1/4-28 Threaded Spindle <b>36</b> = 300 Series 1/4" Capacity Collet (3 piece)</p> <p><u>Extended Termination Code</u></p> <p><b>B1</b> = Belt Sander (1/4" x 12") <b>B2</b> = Belt Sander (1/2" x 12") <b>B3</b> = Belt Sander (1/2" x 24") <b>B4</b> = Belt Sander (1" x 12") <b>B5</b> = Belt Sander (1" x 24")</p> <p><u>Options</u></p> <p><b>Optional Collets</b></p>										<b>Front Exhaust</b>	<b>Rear Exhaust</b>	<b>00</b> = 12,000	<b>80</b> = 12,000	<b>01</b> = 20,000	<b>81</b> = 20,000
<b>Front Exhaust</b>	<b>Rear Exhaust</b>														
<b>00</b> = 12,000	<b>80</b> = 12,000														
<b>01</b> = 20,000	<b>81</b> = 20,000														

The original language of this manual is English.

### Product Safety Information:

#### Intended Use:

This pneumatic material removal tool is to be used only for removing material by utilizing appropriate abrasive wheels, rotary files or other material removal cutting devices.

For product safety information and requirements for grinding without a wheel guard refer to Apex Tool Group, LLC or Apex Tool Group GmbH & Co. OHG documents:

GS-2007, General Safety Pneumatic Grinders  
CE-2012, General Safety Sanders



This product must not be modified in any manner unless approved in writing by Apex Tool Group, LLC or Apex Tool Group GmbH & Co. OHG. All safety devices must be properly installed and maintained in good working order.

### EC Declaration of Conformity:

We affirm that this machine is in accordance with the following EC regulations (2006/42/EC). Applied harmonized standards are ISO 12100:2010-11.

The name, job function and address of the person authorized to compile the technical file.

Mr. Vishnu Irigireddy  
Director of Global R&D- Mechanical Engineering  
Apex Tool Group  
670 Industrial Drive  
Lexington, SC 29072

Signature: Vishnu Irigireddy  
Date: December 17, 2015

### Noise and Vibration:

10LF Series Noise Level:  $\leq 85$  dB(A)

12LF Series Noise Level:  $\leq 85$  dB(A)

10LF Series Vibration Level:  $< 2.5$  m/s<sup>2</sup>

12LF Series Vibration Level:  $< 2.5$  m/s<sup>2</sup>

### Air Line Lubrication:

Use Apex Tool Group, LLC or Apex Tool Group GmbH & Co. OHG's lightweight air tool oil 500021 (available in quantities shown in the following chart) or an SAE-5 lightweight spindle oil.

Part No.	Packaged	Designation
540397	1 Quart (0.94 liter)	Airlube 10W/NR-420LB DR
533485	1 US Gallon (3.78 liter)	Airlube 10W/NR-420LB DR

### Grease:

Part No.	Packaged	Designation
45-0980	2 oz. (0.06 kg)	Angle Head: Moly-XL SAE 250
540395	2 oz. (0.06 kg)	Planetary: Magnalube-G
513156	16 oz. (0.45 kg)	Planetary: Magnalube-G

### Air Supply Line:

Parameter	Description
Air Hose	Minimum inside diameter: 1/4" (6,4 mm) Maximum length: 8.0' (2,4 m)
Air Pressure	Recommended: 90 psi (620 kPa)
Compressed air	Air quality according to ISO 8573-1, quality class 2.4.3 The compressed air must be clean and dry.

### Service and Repair:

Tool service and repair should be performed by an authorized Apex Tool Group, LLC or Apex Tool Group GmbH & Co. OHG Center. Refer to the last page of this manual for locations.

### Disposal:



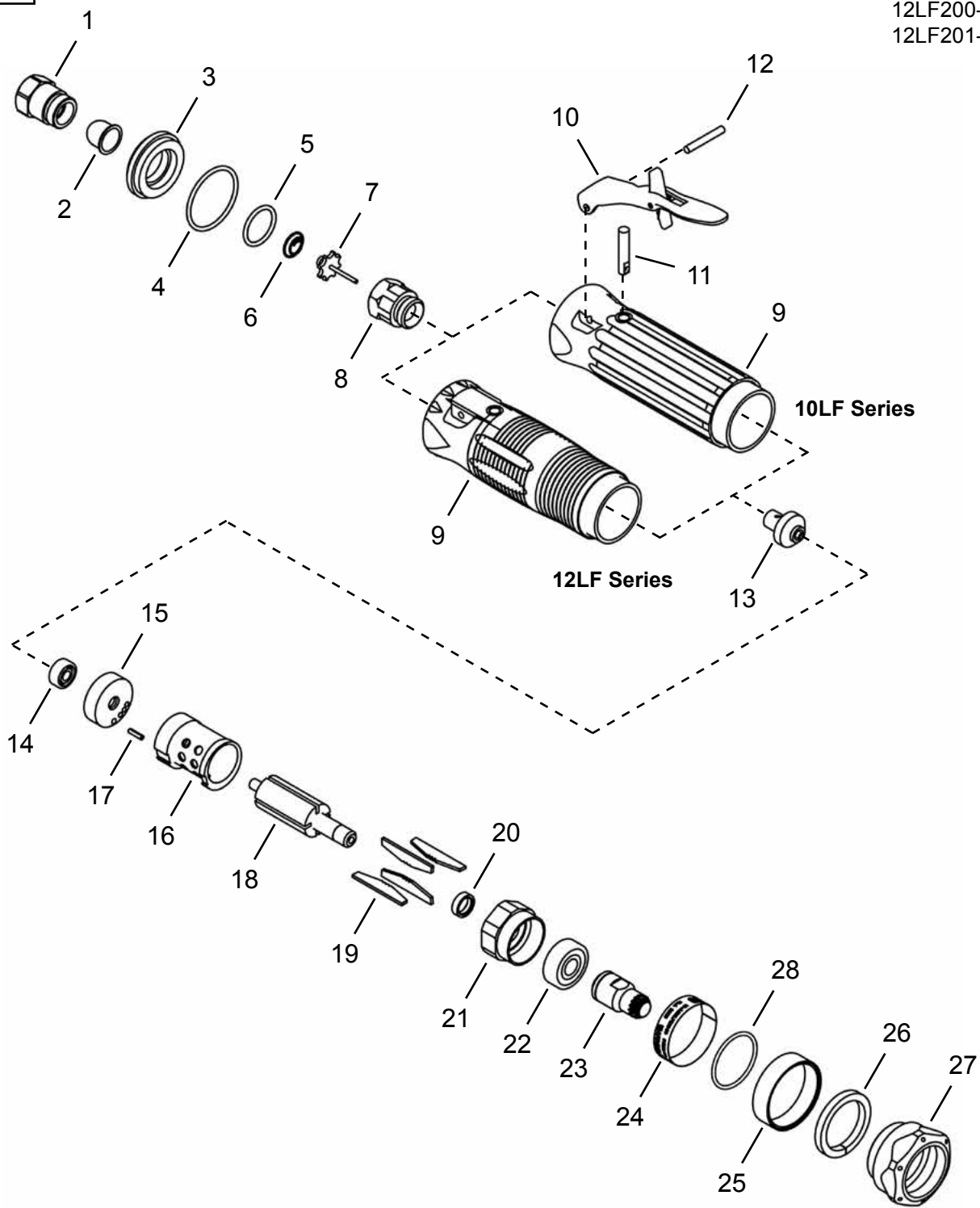
Observe local disposal guidelines for all components of this tool and its packaging.

### Copyright Protection:

Apex Tool Group, LLC or Apex Tool Group GmbH & Co. OHG reserves the right to modify, supplement or improve this document or the product without prior notice. This document may not be reproduced in any way, shape or form, in full or parts thereof, or copied to another natural or machine readable language or to a data carrier, whether electronic, mechanical, optical or otherwise without the express permission of Apex Tool Group, LLC or Apex Tool Group GmbH & Co. OHG

**Models**  
10LF200-  
10LF201-  
12LF200-  
12LF201-

**“A”**



**Illustration "A": Front Exhaust Models**

Ref	Number	#	X	EN
				Description
1	01-2505	1	2	Inlet Adapter
2	203480PT	1	3	Filter
3	01-2506	1		Exhaust Plug
4	3036PT	1	3	O-Ring
5	2965	1	3	O-Ring
6	01-2519	1	3	Spring
7	01-2518	1		Poppet Valve
8	01-2504	1		Valve Seat
9	Table "A"	1		Housing
10	01-1267	1	2	Lockoff Lever Assembly
11	01-1017	1	2	Shaft
12	1042	1	2	Pin
13	03-1100	1		Governor Valve
14	1009879	1	2	Ball Bearing
15	1110072	1		Rear End Plate
16	1017579	1		Cylinder (includes Ref. 17)
17	1017422	1	3	Cylinder Pin
18	03-1005	1		Rotor
19	1008914	4	12	Rotor Blade
20	1017PT	1		Spacer
21	03-1064	1		Front End Plate
22	03-1111	1	2	Ball Bearing
23	Table "A"	1	1	Gear Set
24	03-1086	1		Label
25	03-1087	1		Label Cover
26	03-1113	1	3	Muffler Element
27	03-1043	1		Lock Ring
28	93040050	1	3	O-Ring

(#) Quantity

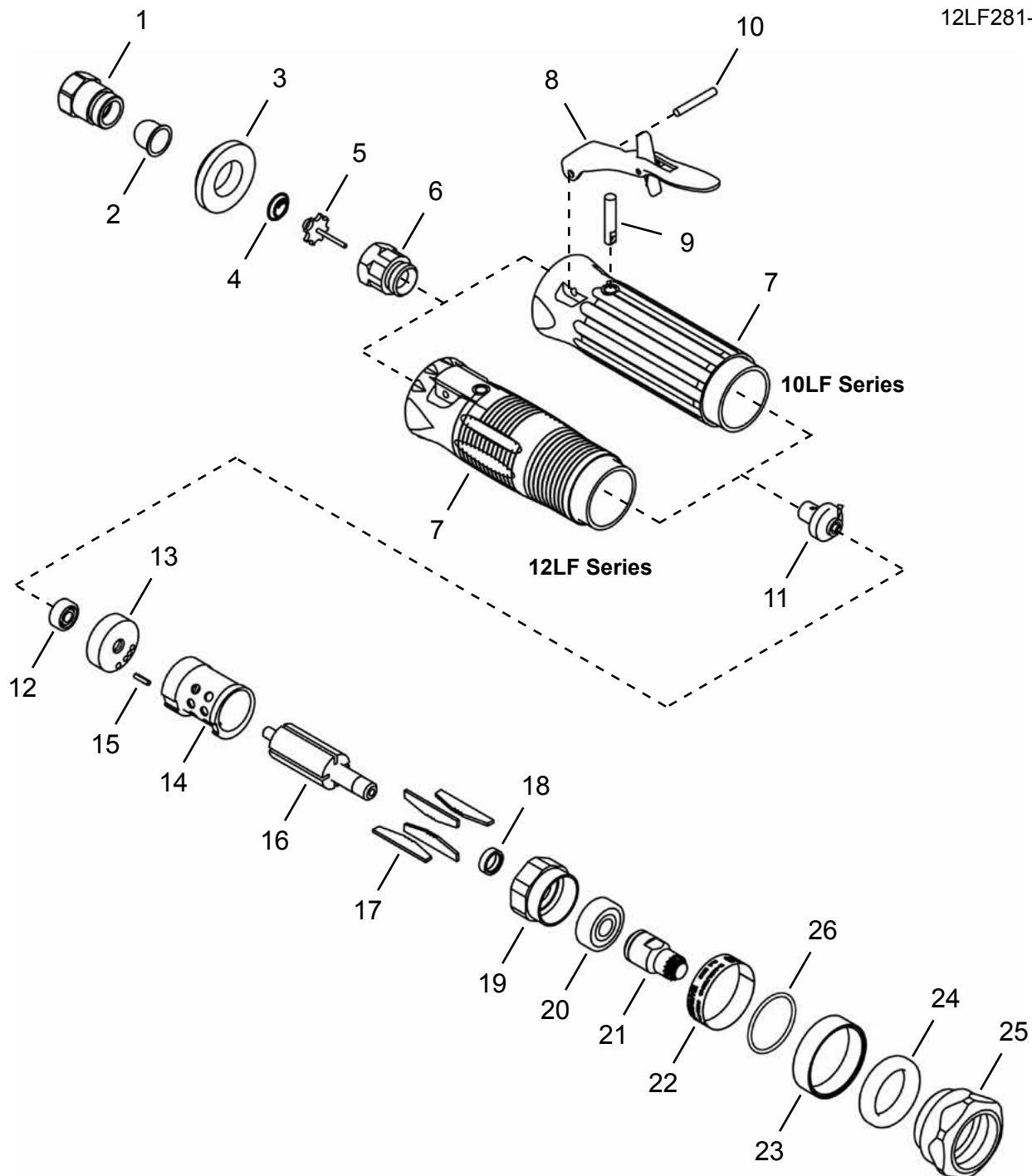
(X) Recommended Spare Parts (quantity shown based on 1-5 tools in operation)

**Table "A"**

Ref.	Description	#	10LF200-	#	12LF200-	#	10LF201-	#	12LF201-
9	Housing	1	03-1107	1	03-1112	1	03-1107	1	03-1112
23	Gear Set	1	03-1115	1	03-1115	1	03-1116	1	03-1116

**"B"**

**Models**  
10LF280-  
10LF281-  
12LF280-  
12LF281-



**Illustration "B": Rear Exhaust Models**

Ref	Number	#	X	EN
				Description
1	01-2505	1	2	Inlet Adapter
2	203480PT	1	3	Filter
3	01-2520	1		Diffuser
4	01-2519	1	3	Spring
5	01-2518	1		Poppet Valve
6	01-2504	1		Valve Seat
7	Table "B"	1		Housing
8	01-1267	1	2	Lockoff Lever Assembly
9	01-1017	1	2	Shaft
10	1042	1	2	Pin
11	03-1100	1		Governor Valve
12	1009879	1	2	Ball Bearing
13	1110072	1		Rear End Plate
14	1017579	1		Cylinder (includes Ref. 15)
15	1017422	1	3	Cylinder Pin
16	03-1005	1		Rotor
17	1008914	4	12	Rotor Blade
18	1017PT	1		Spacer
19	03-1064	1		Front End Plate
20	03-1111	1	2	Ball Bearing
21	Table "B"	1	1	Gear Set
22	03-1086	1		Label
23	03-1087	1		Label Cover
24	01-1025	1	3	Seal
25	03-1044	1		Lock Ring
26	93040050	1	3	O-Ring

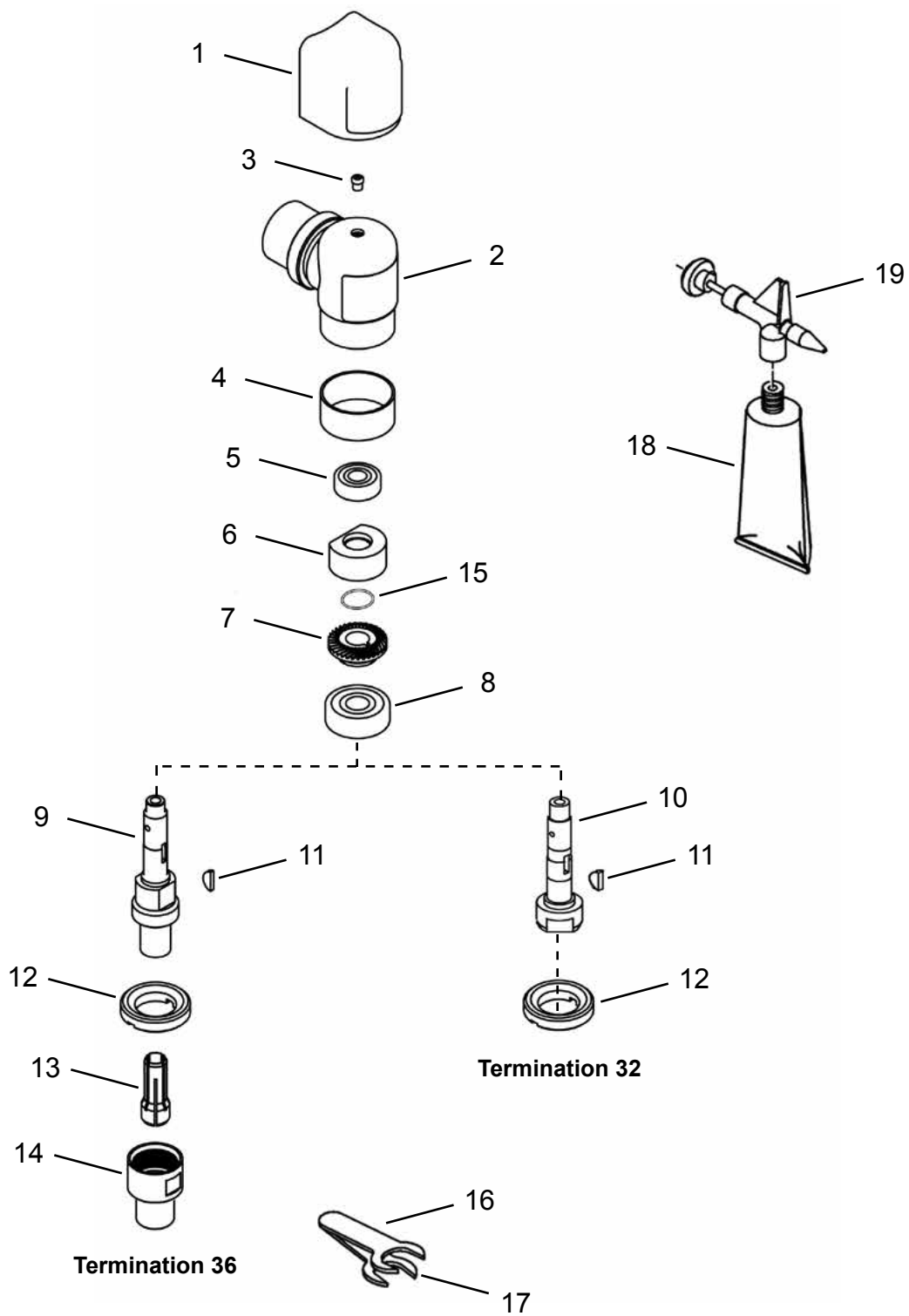
(#) Quantity

(X) Recommended Spare Parts (quantity shown based on 1-5 tools in operation)

**Table "B"**

Ref.	Description	#	10LF280-	#	12LF280-	#	10LF281-	#	12LF281-
7	Housing	1	03-1107	1	03-1112	1	03-1107	1	03-1112
21	Gear Set	1	03-1115	1	03-1115	1	03-1116	1	03-1116

**“C”**





**Illustration "C": Angle Attachment**

Ref	Number	#	X	EN
				Description
1	01-1048	1	2	Angle Head Cover
2	1024PT	1		Angle Head Housing (includes Ref. 3-4)
3	1463PT	1	2	Grease Fitting
4	1356PT	1		Wear Ring
5	504PT	1	3	Ball Bearing
6	1755PT	1	3	Lubricator Disc
7	Table "C"	1	1	Gear Set
8	03-1111	1	2	Ball Bearing
9	1029PT	1		Spindle (Termination -36)
10	1069	1		Spindle (Termination -32)
11	1062PT	1	3	Key
12	1025PT	1		Lock Ring
13	Table "C1"	1	3	300 Series Collet
14	208196PT	1	3	Nosepiece Cap
15	2053PT	1	3	O-Ring
16	14-0807	1		7/16" Wrench
17	14-0811	1		11/16" Wrench (Termination -36)
18	45-0980	1	2	Gear Lube (2 oz.)
19	45-1982	1		Grease Gun

(#) Quantity

(X) Recommended Spare Parts (quantity shown based on 1-5 tools in operation)

**Table "C"**

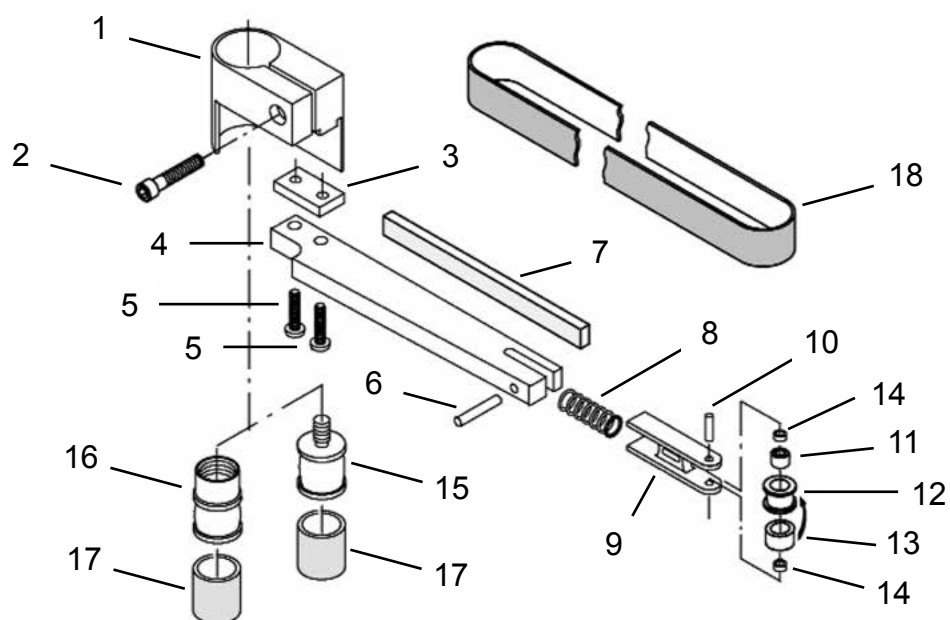
Ref.	Description	#	10LF200- 12LF200- 10LF280- 12LF280-	#	10LF201- 12LF201- 10LF281- 12LF281-
7	Gear Set	1	03-1115	1	03-1116

**Table "C1"**

300 Series Optional Collets					
Part No.	Arbor Size	Part No.	Arbor Size	Part No.	Arbor Size
301PT	3/64"	305PT	5/32"	310PT	6mm
302PT	5/64"	306PT	3/16"		
303	3/32"	308PT *	1/4"		
304PT	1/8"	311	3mm		

\* Standard Collet

**“D” Termination -B1 (1/4” x 12” Belt Sander)**



**Dotco®**  
Extended Terminations

**45-8452EN**  
12/28/2015

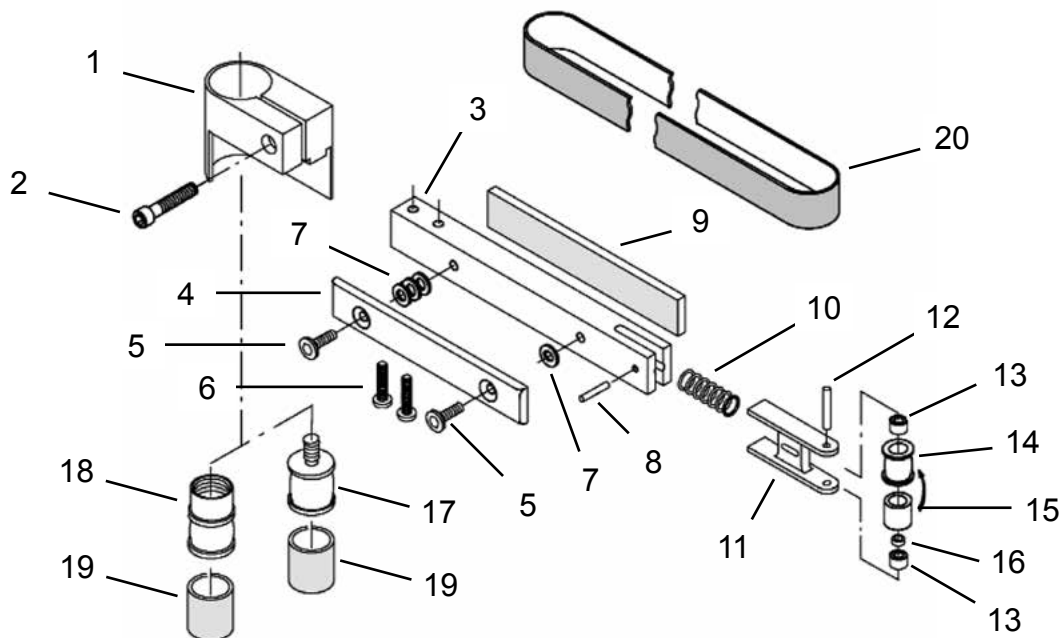
**Illustration "D" - Belt Sander Termination B1**

Ref	Number	#	X	EN
				Description
--	14-1638S	1		Belt Sander Assembly (includes Ref. 1-14)
1	14-1297	1		Guard
2	2826PT	1	1	Screw
3	14-1619	1		Spacer
4	14-1597	1		Boom
5	1900PT	2	4	Screw
6	1833PT	1		Pin
7	14-1343	1	1	Cushioned Platen
8	1904PT	1	2	Yoke Spring
9	14-1617	1		Yoke
10	1831PT	1	1	Yoke Pin
--	14-1602	1	1	Wheel Assembly (includes Ref. 11-13)
11	564PT	1	2	Ball Bearing
12	14-1604	1	1	Wheel (includes Ref. 13)
13	14-1616	1	3	Tire
14	14-1618	2		Spacer
15	14-1308	1	1	Drive Wheel (32B1 Termination) (includes Ref. 17)
16	14-1309	1	1	Drive Wheel (36B1 Termination) (includes Ref. 17)
17	14-1304	1	3	Tire
18	14-1591	1	6	Sanding Belt (80 Grit)
	14-1593	1	6	Sanding Belt (120 Grit)

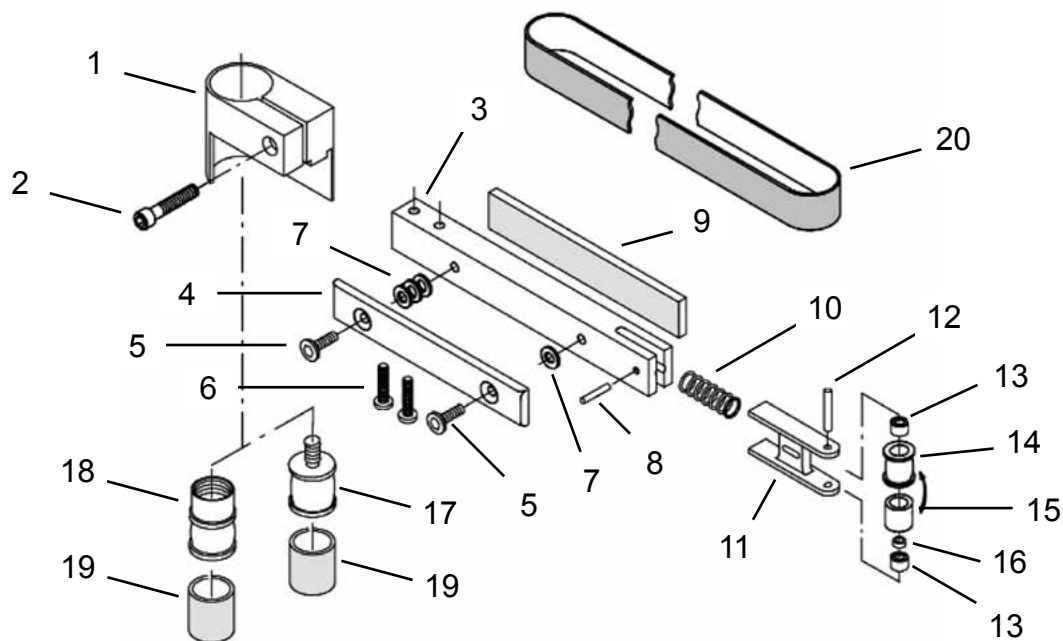
(#) Quantity

(X) Recommended Spare Parts (quantity shown based on 1-5 tools in operation)

**“E”** Termination -B2 (1/2” x 12” Belt Sander)



**“F”** Termination -B3 (1/2” x 24” Belt Sander)



**Dotco®**  
Extended Terminations

**45-8452EN**  
12/28/2015

**Illustration "E" - Belt Sander Termination B2**

Ref	Number	#	X	EN
				Description
--	14-1301S	1		Belt Sander Assembly (includes Ref. 1-16)
1	14-1297	1		Guard
2	2826PT	1	1	Screw
3	14-1298	1		Boom
4	14-1293	1		Steel Platen
5	1902PT	2	4	Screw
6	1900PT	2	4	Screw
7	1901	4	12	Nylon Washer
8	1833PT	1		Pin
9	14-1338	1	1	Cushioned Platen
10	1904PT	1	2	Yoke Spring
11	14-1296	1		Yoke
12	1903PT	1	1	Yoke Pin
--	14-1311	1	1	Wheel Assembly (includes Ref. 13-16)
13	564PT	2	4	Ball Bearing
14	14-1312	1	1	Wheel (includes Ref. 15)
15	14-1305	1	3	Tire
16	1345PT	1		Spacer
17	14-1308	1	1	Drive Wheel (32B2 Termination) (includes Ref. 19)
18	14-1309	1	1	Drive Wheel (36B2 Termination) (includes Ref. 19)
19	14-1304	1	3	Tire
20	14-1348	1	6	Sanding Belt (80 Grit)
	14-1352	1	6	Sanding Belt (120 Grit)

(#) Quantity

(X) Recommended Spare Parts (quantity shown based on 1-5 tools in operation)

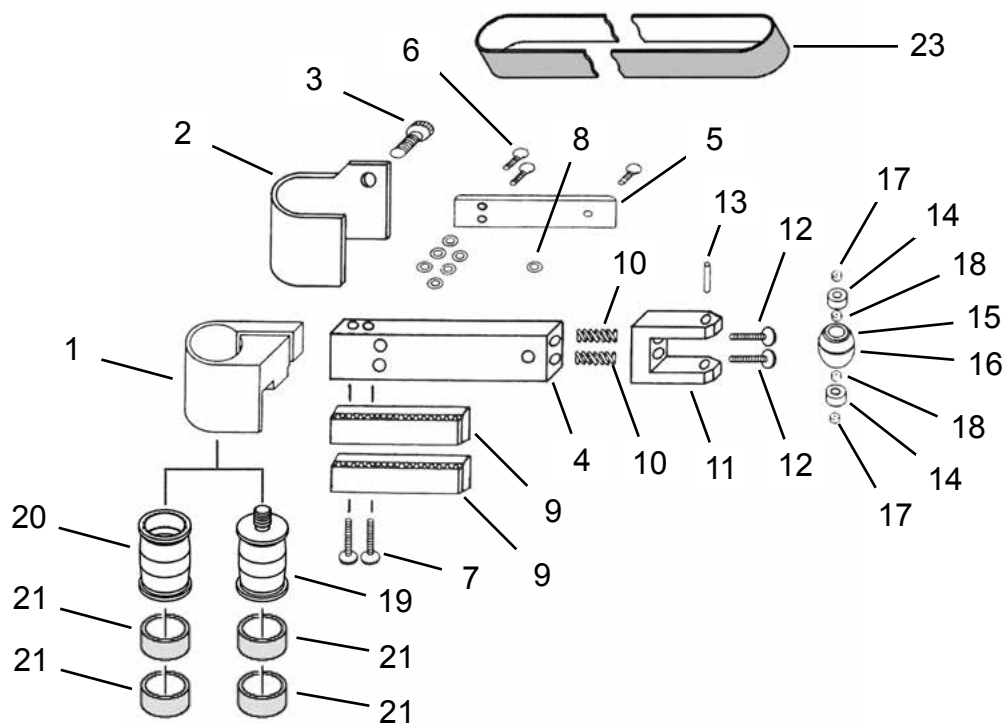
**Illustration "F" - Belt Sander Termination B3**

Ref	Number	#	X	EN
				Description
--	14-1318S	1		Belt Sander Assembly (includes Ref. 1-16)
1	14-1297	1		Guard
2	2826PT	1	1	Screw
3	14-1320	1		Boom
4	14-1314	1		Steel Platen
5	1902PT	2	4	Screw
6	1900PT	2	4	Screw
7	1901	4	12	Nylon Washer
8	1833PT	1		Pin
9	14-1341	1	1	Cushioned Platen
10	1904PT	1	2	Yoke Spring
11	14-1296	1		Yoke
12	1903PT	1	1	Yoke Pin
--	14-1311	1	1	Wheel Assembly (includes Ref. 13-16)
13	564PT	2	4	Ball Bearing
14	14-1312	1	1	Wheel (includes Ref. 15)
15	14-1305	1	3	Tire
16	1345PT	1		Spacer
17	14-1308	1	1	Drive Wheel (32B3 Termination) (includes Ref. 19)
18	14-1309	1	1	Drive Wheel (36B3 Termination) (includes Ref. 19)
19	14-1304	1	3	Tire
20	14-1368	1	6	Sanding Belt (80 Grit)
	14-1372	1	6	Sanding Belt (120 Grit)

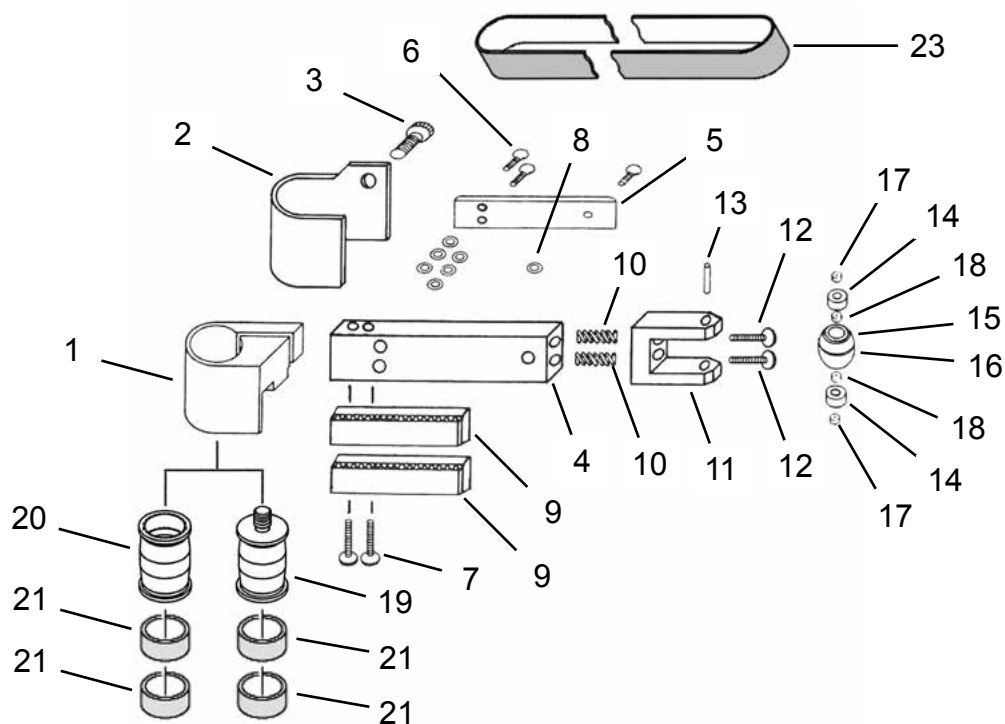
(#) Quantity

(X) Recommended Spare Parts (quantity shown based on 1-5 tools in operation)

**"G"** Termination -B4 (1" x 12" Belt Sander)



**"H"** Termination -B5 (1" x 24" Belt Sander)



**Dotco®**  
Extended Terminations

**45-8452EN**  
12/28/2015

**Illustration "G" - Belt Sander Termination B4**

Ref	Number	#	X	EN
				Description
--	14-1463	1		Belt Sander Assembly (32B4 Termination) (includes Ref. 1-22)
--	14-1473	1		Belt Sander Assembly (36B4 Termination) (includes Ref. 1-22)
1	14-1356	1		Guard
2	14-1471	1		Guard
3	14-1498	1	1	Screw
4	14-1464	1		Boom
5	14-1466	1		Steel Platen
6	1902PT	3	6	Screw
7	7731	2	4	Screw
8	1901	7	14	Nylon Washer
9	14-1338	2	2	Cushioned Platen
10	14-1478	2	4	Yoke Spring
11	14-1465	1		Yoke
12	2193PT	2	4	Yoke Screw
13	14-3036	1	1	Yoke Pin
--	14-1472	1	1	Wheel Assembly (includes Ref. 14-18)
14	564PT	2	4	Ball Bearing
15	14-1469	1	1	Wheel (includes Ref. 16)
16	14-1305	2	6	Tire
17	14-1467	2		Spacer
18	1345PT	2		Spacer
19	14-1468	1	1	Drive Wheel (32B4 Termination) (includes Ref. 21)
20	14-1470	1	1	Drive Wheel (36B4 Termination) (includes Ref. 21)
21	14-1304	2	6	Tire
22	14-0184PT	1		Wrench (1/8") (not shown)
23	14-1583	1	6	Sanding Belt (80 Grit)
	14-1585	1	6	Sanding Belt (120 Grit)

(#) Quantity

(X) Recommended Spare Parts (quantity shown based on 1-5 tools in operation)

**Illustration "H" - Belt Sander Termination B5**

Ref	Number	#	X	EN
				Description
--	14-1603	1		Belt Sander Assembly (32B5 Termination) (includes Ref. 1-22)
--	14-1613	1		Belt Sander Assembly (36B5 Termination) (includes Ref. 1-22)
1	14-1356	1		Guard
2	14-1471	1		Guard
3	14-1498	1	1	Screw
4	14-1614	1		Boom
5	14-1615	1		Steel Platen
6	1902PT	3	6	Screw
7	7731	2	4	Screw
8	1901	7	14	Nylon Washer
9	14-1341	2	2	Cushioned Platen
10	14-1478	2	4	Yoke Spring
11	14-1465	1		Yoke
12	2193PT	2	4	Yoke Screw
13	14-3036	1	1	Yoke Pin
--	14-1472	1	1	Wheel Assembly (includes Ref. 14-18)
14	564PT	2	4	Ball Bearing
15	14-1469	1	1	Wheel (includes Ref. 16)
16	14-1305	2	6	Tire
17	14-1467	2		Spacer
18	1345PT	2		Spacer
19	14-1468	1	1	Drive Wheel (32B5 Termination) (includes Ref. 21)
20	14-1470	1	1	Drive Wheel (36B5 Termination) (includes Ref. 21)
21	14-1304	2	6	Tire
22	14-0184PT	1		Wrench (1/8") (not shown)
23	14-1643	1	6	Sanding Belt (80 Grit)
	14-1645	1	6	Sanding Belt (120 Grit)

(#) Quantity

(X) Recommended Spare Parts (quantity shown based on 1-5 tools in operation)

# POWER TOOLS SALES & SERVICE CENTERS

Please note that all locations may not service all products.

Contact the nearest Apex Tool Group Sales & Service Center for the appropriate facility to handle your service requirements.

## NORTH AMERICA | SOUTH AMERICA

### Detroit, Michigan

Apex Tool Group  
2630 Superior Court  
Auburn Hills, MI 48236  
Phone: +1 (248) 393-5640  
Fax: +1 (248) 391-6295

### Lexington, South Carolina

Apex Tool Group  
670 Industrial Drive  
Lexington, SC 29072  
Phone: +1 (800) 845-5629  
Phone: +1 (919) 387-0099  
Fax: +1 (803) 358-7681

### Louisville, Kentucky

Apex Tool Group  
1000 Glengarry Drive  
Suite 150  
Fairdale, KY 40118  
Phone: +1 (502) 708-3400  
[apexpowertools.com/service](http://apexpowertools.com/service)

### Canada

Apex Tool Canada, Ltd.  
7631 Bath Road  
Mississauga, Ontario L4T 3T1  
Canada  
Phone: (866) 691-6212  
Fax: (905) 673-4400

### Mexico

Apex Tool Group  
Manufacturing México  
S. de R.L. de C.V.  
Vialidad El Pueblito #103  
Parque Industrial Querétaro  
Querétaro, QRO 76220  
Mexico  
Phone: +52 (442) 211 3800  
Fax: +52 (800) 685 5560

### Brazil

Apex Tool Group  
Ind. Com. Ferram, Ltda.  
Av. Liberdade, 4055  
Zona Industrial Iporanga  
Sorocaba, São Paulo  
CEP# 18087-170  
Brazil  
Phone: +55 15 3238 3820  
Fax: +55 15 3238 3938

## EUROPE | MIDDLE EAST | AFRICA

### England

Apex Tool Group  
GmbH & Co. OHG  
C/O Spline Gauges  
Piccadilly, Tamworth  
Staffordshire B78 2ER  
United Kingdom  
Phone: +44 1827 8727 71  
Fax: +44 1827 8741 28

### France

Apex Tool Group S.A.S.  
25 rue Maurice Chevalier  
B.P. 28  
77831 Ozoir-La-Ferrière  
Cedex, France  
Phone: +33 1 64 43 22 00  
Fax: +33 1 64 43 17 17

### Germany

Apex Tool Group  
GmbH & Co. OHG  
Industriestraße 1  
73463 Westhausen  
Germany  
Phone: +49 (0) 73 63 81 0  
Fax: +49 (0) 73 63 81 222

### Hungary

Apex Tool Group  
Hungária Kft.  
Platánfa u. 2  
9027 Győr  
Hungary  
Phone: +36 96 66 1383  
Fax: +36 96 66 1135

## ASIA PACIFIC

### Australia

Apex Tool Group  
519 Nurigong Street, Albury  
NSW 2640  
Australia  
Phone: +61 2 6058 0300

### China

Apex Power Tool Trading  
(Shanghai) Co., Ltd  
Building A8, No. 38  
Dongsheng Road  
Pudong, Shanghai  
China 201201  
Phone: +86 21 60880320  
Fax: +86 21 60880298

### India

Apex Power Tools India  
Private Limited  
Gala No. 1, Plot No. 5  
S. No. 234, 235 & 245  
Indialand Global  
Industrial Park  
Taluka-Mulsi, Phase I  
Hinjawadi, Pune 411057  
Maharashtra, India  
Phone: +91 020 66761111

### Japan

Apex Tool Group Japan  
Korin-Kaikan 5F,  
3-6-23 Shibakoen, Minato-Ku,  
Tokyo 105-0011, JAPAN  
Phone: +81-3-6450-1840  
Fax: +81-3-6450-1841

### Korea

Apex Tool Group Korea  
#1503, Hibrand Living Bldg.,  
215 Yangjae-dong,  
Seocho-gu, Seoul 137-924,  
Korea  
Phone: +82-2-2155-0250  
Fax: +82-2-2155-0252

# DOTCO®

### Apex Tool Group, LLC

1000 Lufkin Road  
Apex, NC 27539  
Phone: +1 (919) 387-0099  
Fax: +1 (919) 387-2614  
[www.apexpowertools.com](http://www.apexpowertools.com)







**Clayton products are proudly made in the USA**

