

Safety – Operation – Maintenance
Keep this document in a safe place
Read and understand this manual before operating

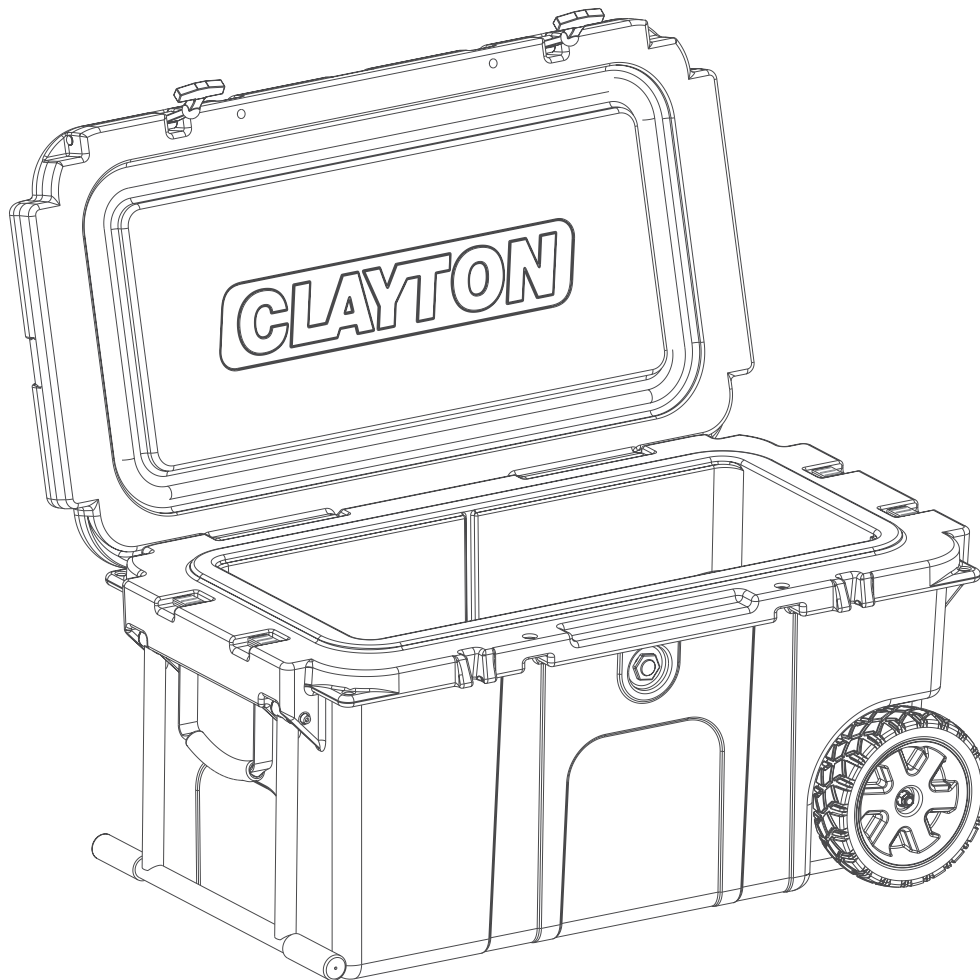


Tactical Cooler

Models with Prefix: 955-CL001



Scan this QR code for
online instructions and
documentation, or visit
www.ClaytonHowTo.com



⚠ WARNING

Follow all safety rules for your protection.

SAFETY LEGEND



⚠ WARNING

Read and understand operator's manual before
using this cooler.



⚠ WARNING

Suffocation Hazard - do not put children or
small animals in cooler.

SAFETY INSTRUCTIONS

Carefully read all instructions before using. Products offered by Clayton should not be modified, converted or otherwise altered from the original design without express written consent from Clayton Associates, Inc.

Intent

- The cooler is designed to be durable, and keep ice frozen for an extended period of time

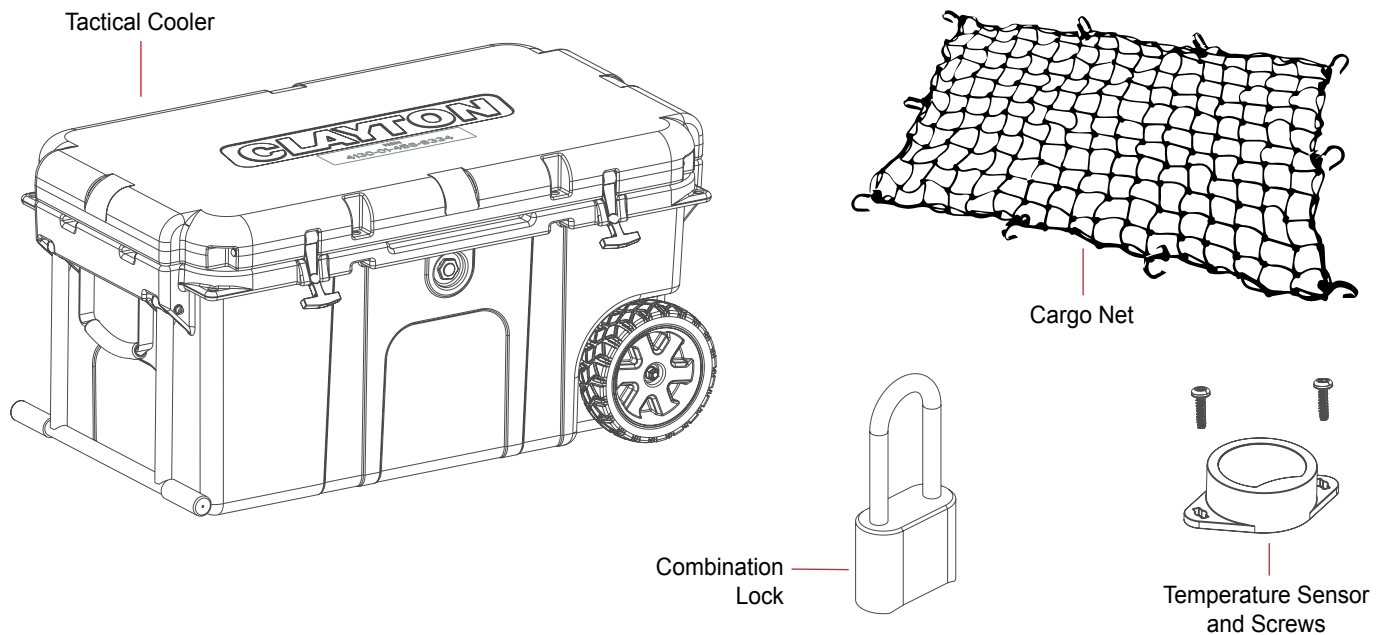
Efficiency

- The cooler is rotomolded in one piece from food grade UV-resistant polyethylene
- The cooler lid & body are filled with polyurethane foam, 2 inches thick in the body and 3 inches thick in the lid
- The cooler is dry-ice compatible

Accessories

- The bluetooth temperature sensor and iPhone/Android apps let you monitor the interior temperature without ever opening the cooler

WHAT'S IN THE BOX



SPECIFICATIONS & REQUIREMENTS

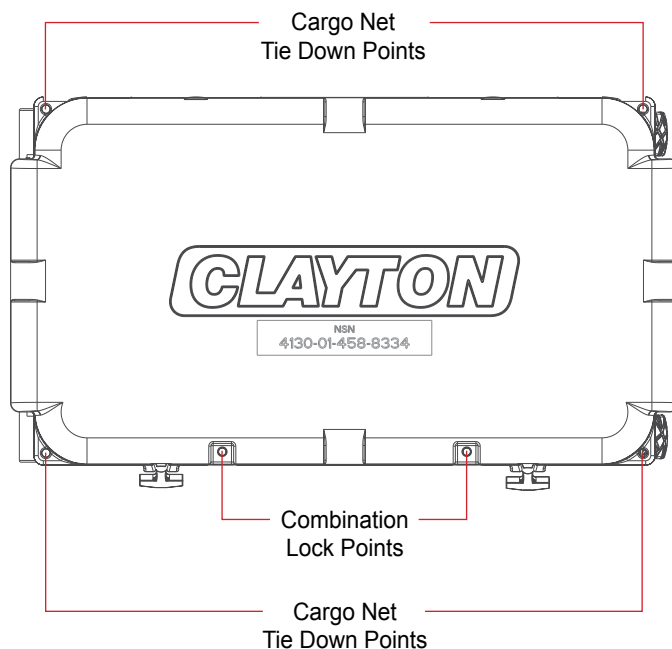
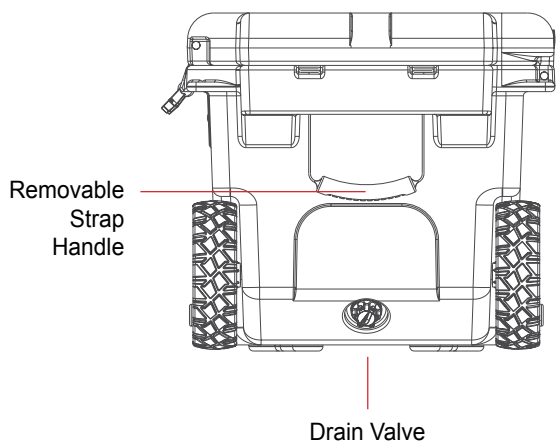
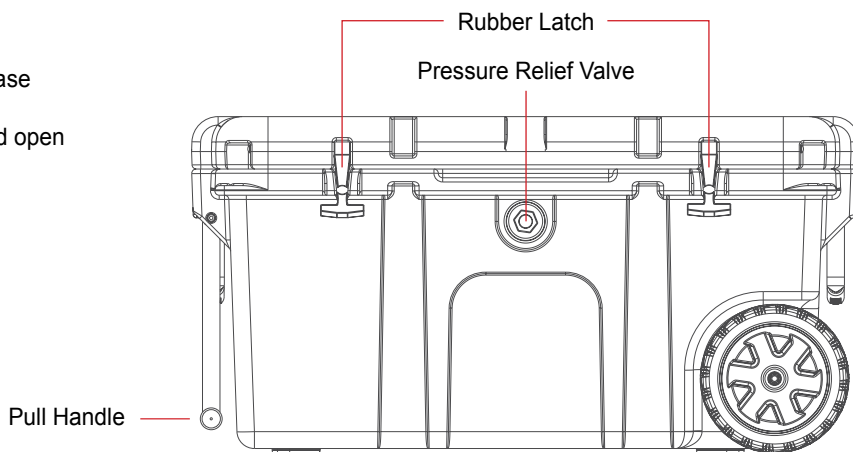
Exterior Dimensions	38.2 L x 21.5 W x 19.4 H in
Interior Dimensions.....	28.2 L x 12.1 W x 12.9 H in
Capacity.....	82 qt
Weight	56 lbs

GETTING STARTED

1. Unbox the cooler

- Remove the cooler from the box
- Pull down and out on the two rubber latches to release and open the lid
- Remove the accessory package from the cooler and open

2. Familiarize yourself with the cooler



3. Pressure Relief Valve

- Press the pressure relief valve to release positive and negative pressure buildup from inside the cooler before opening

4. Cargo Net

- The cargo net is designed to secure additional items to the top of the cooler.
- Use the 4 tie-down points to attach the cargo net

5. Combination Lock

- The combination lock is designed to secure the cooler at the combination lock points on the front of the cooler

GETTING STARTED

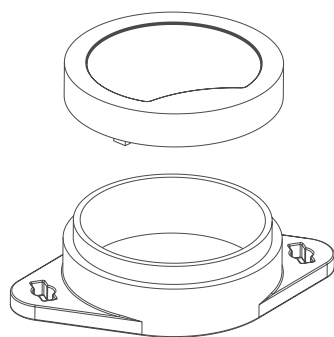
6. Download Clayton Cooler iPhone/Android App

- The bluetooth temperature sensor is designed to work with the Clayton Cooler iPhone/Android app to monitor the temperature inside the cooler without opening it
- Download and install the Clayton Cooler app with the QR Code below:

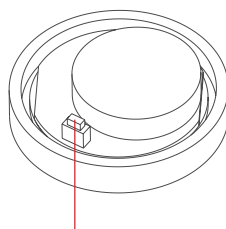


7. Activate the bluetooth sensor

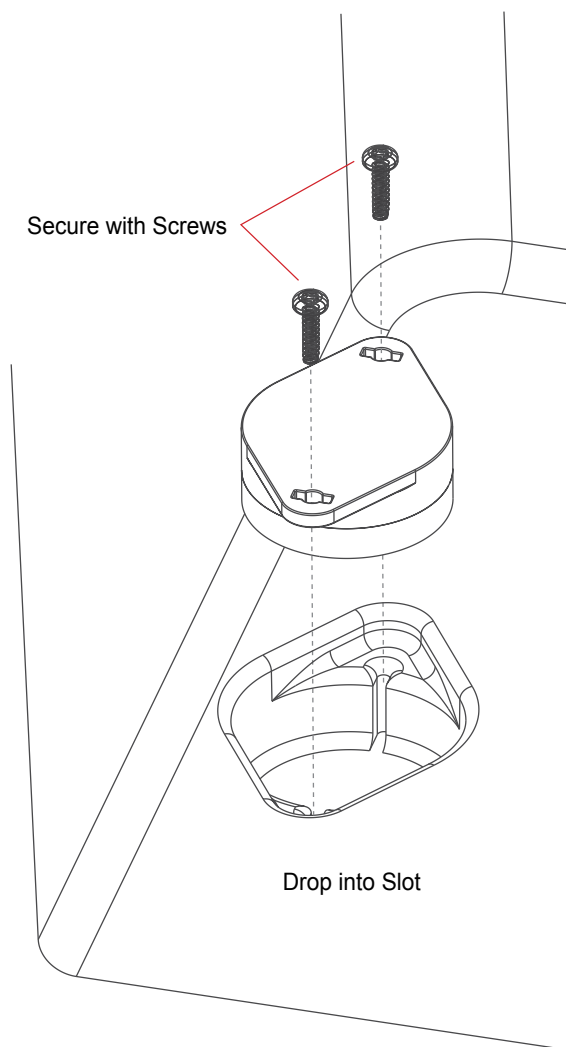
- Unscrew the sensor cover
- Press and hold the button until the LED flashes red (approx 3 sec) to activate the sensor.
- Open the app and add a cooler
- The sensor should be found as Clayton_XXX
- Replace and tighten the cover
- Insert the sensor into the slot in the cooler as shown
- Secure with included screws



Unscrew Cap



Press Button



MAINTENANCE INSTRUCTIONS

Important

- A Preventative Maintenance Program is always recommended

Routine Maintenance

- Clean the cooler with a damp cloth. Do not use petroleum based cleaners

Handling and Storage

- Empty and dry inside of cooler before storing to prevent mold

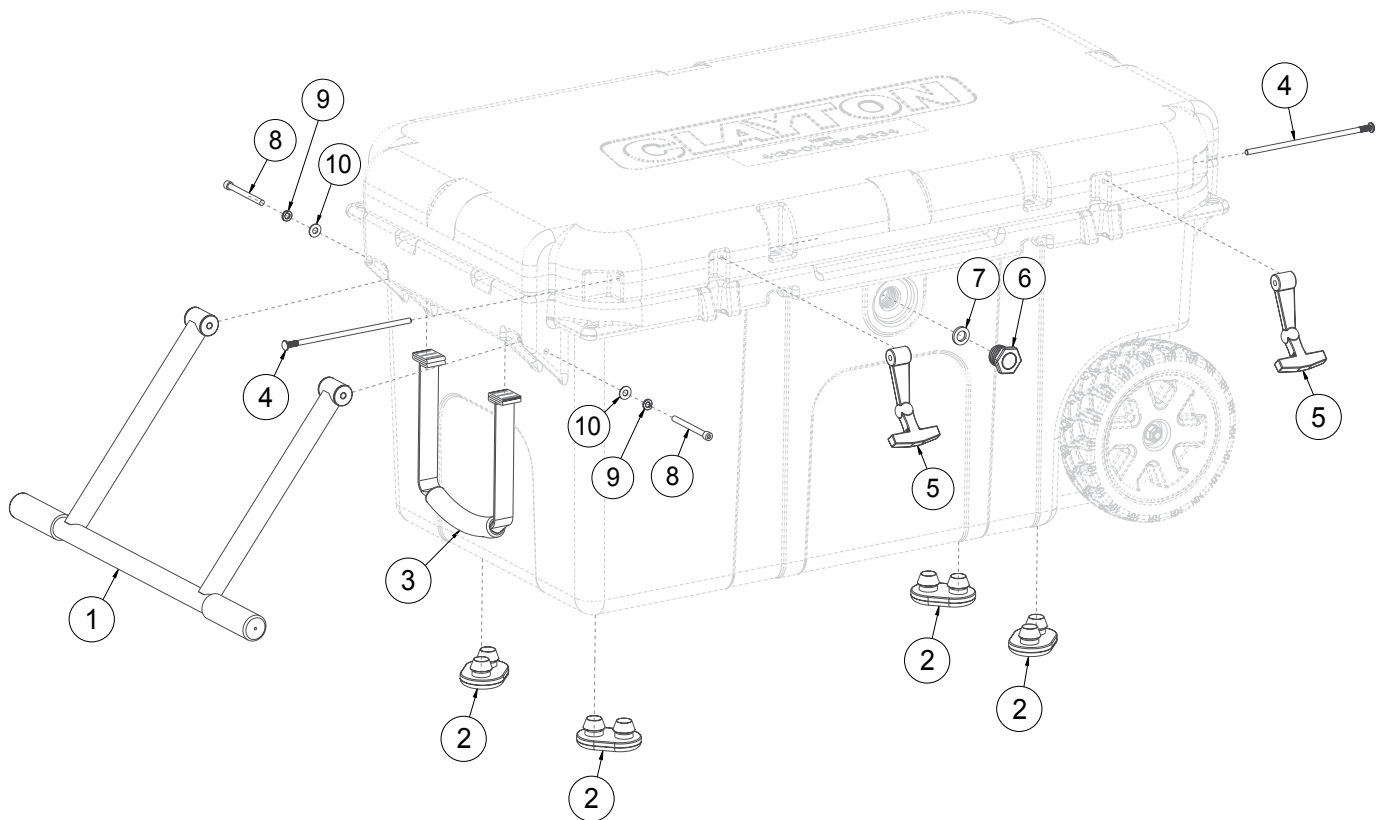
Warranty & Repair

- This cooler is covered by a 1 year manufacturer's warranty

ILLUSTRATED PARTS BREAKDOWN

955-CL001

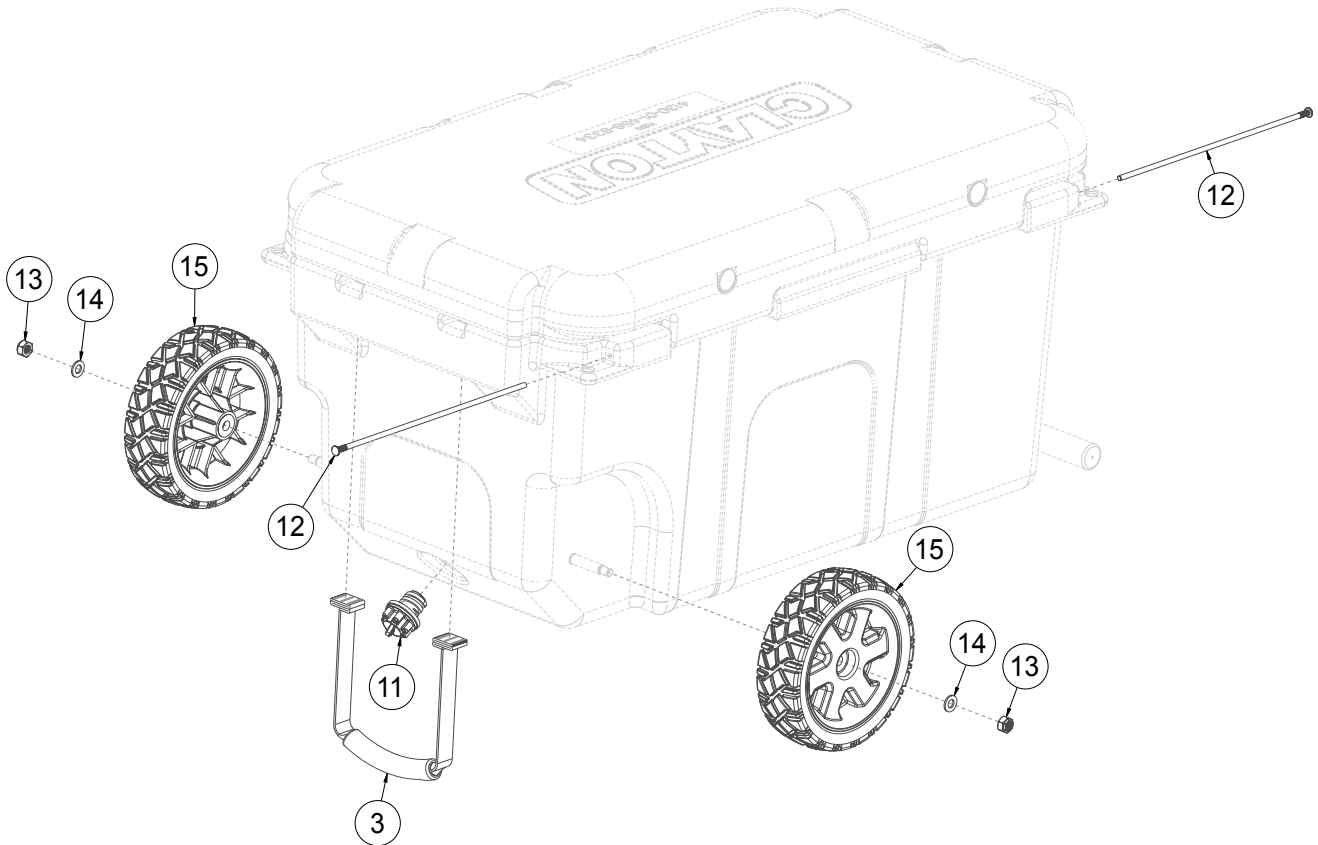
Seq	Item No	Description
1	955-CL001-08	Pull Handle with Grips & Bushings
2	955-CL001-12	Rubber Feet
3	955-CL001-09	Strap Handle
4	955-CL001-05	Latch Pin 7in
5	955-CL001-06	T-Latch Rubber
6	955-CL001-11	Pressure Relief Valve
7	955-CL001-11A	Pressure Relief Valve Gasket
8	955-CL001-16	Socket Head Cap Screw 1/4-20 x 2-3/4in
9	955-CL001-17	Washer Split Lock 1/4in
10	955-CL001-18	Washer Flat 1/4in



ILLUSTRATED PARTS BREAKDOWN

955-CL001

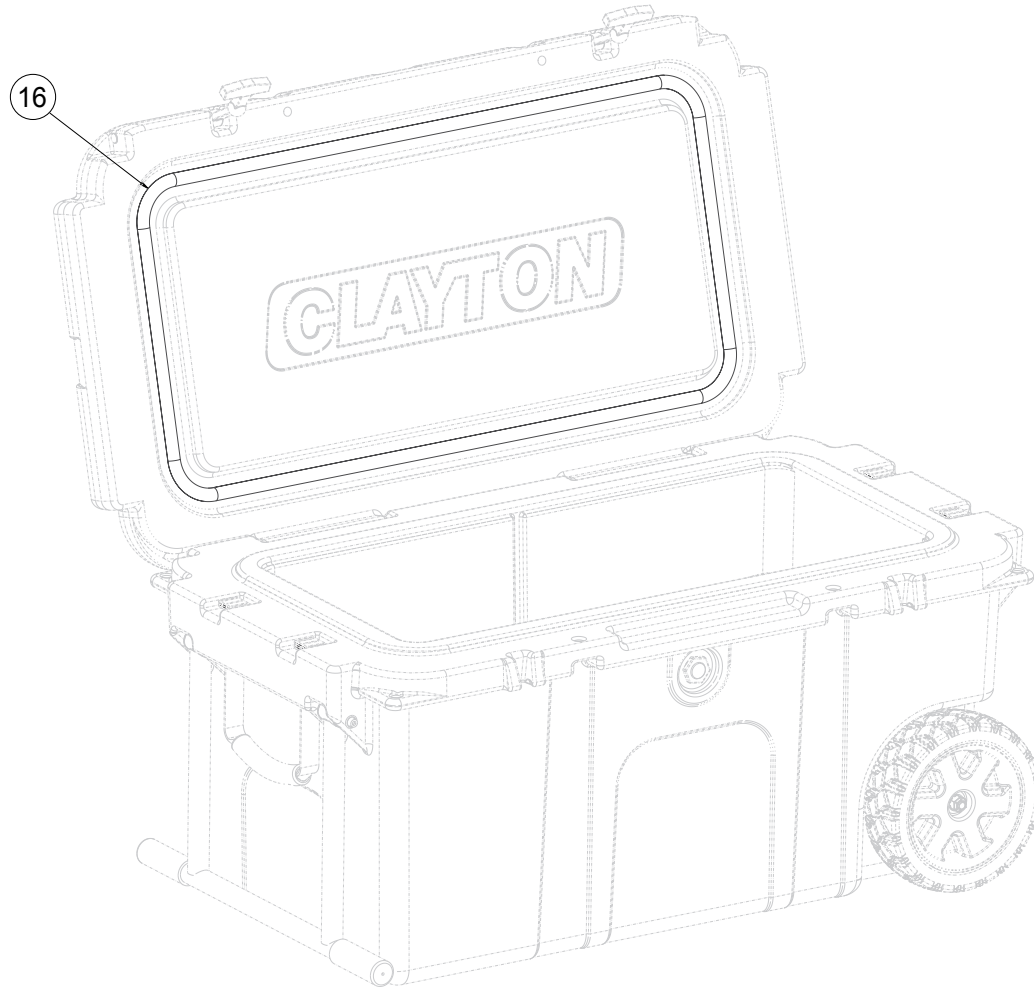
Seq	Item No	Description
3	955-CL001-09	Strap Handle
11	955-CL001-10	Drain Plug & Gasket
12	955-CL001-04	Hinge Pin 13in
13	955-CL001-15	Nut Nylon Lock M10-1.5
14	955-CL001-14	Washer Flat M10
15	955-CL001-07	Wheel 8-1/2 OD x 12mm ID bearing



ILLUSTRATED PARTS BREAKDOWN

955-CL001

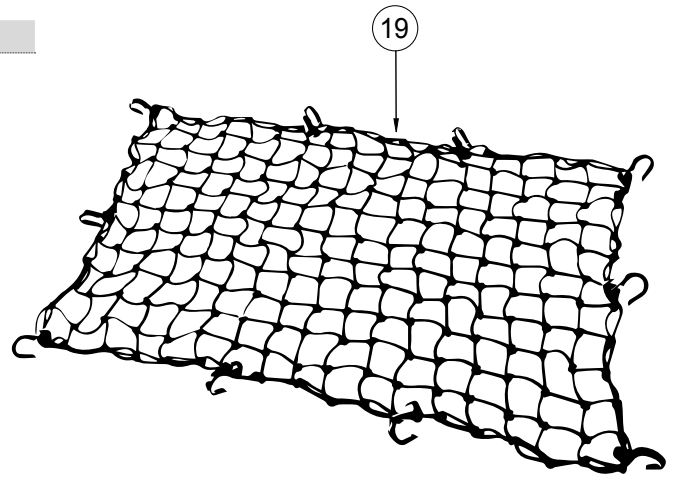
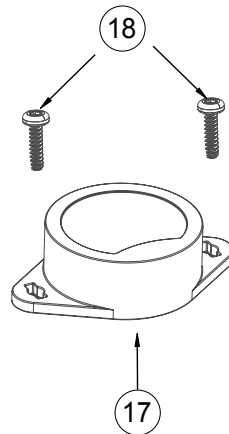
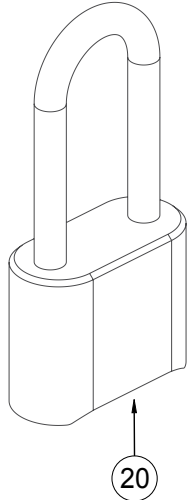
Seq	Item No	Description
16	955-CL001-13	Lid Gasket



ILLUSTRATED PARTS BREAKDOWN

955-CL001

Seq	Item No	Description
17	955-CLACC-01	Bluetooth Temperature Sensor
18	955-CLACC-02	Screw trilobular plastite 6-32 x 1/2in
19	955-TBACC-01	Cargo Net 24x36
20	930-ML975	Combination Lock





Clayton products are proudly made in the USA

