

Safety – Operation – Maintenance

Keep this document in a safe place

Read and understand this manual before operating your air tool



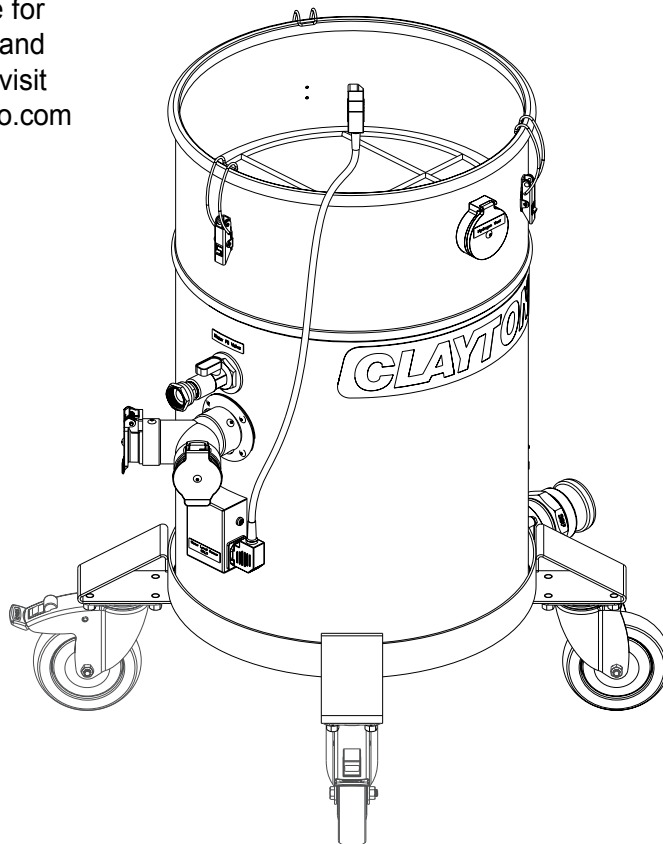
Barracuda Vacuum Tank Stainless Steel for Combustible Dust



Model: 603-315C



Scan this QR code for
online instructions and
documentation, or visit
www.ClaytonHowTo.com



⚠ WARNING

SAFETY LEGEND



⚠ WARNING

Read and understand operator's manual before using this equipment.



⚠ WARNING

Eye protection is required when operating this equipment.



⚠ WARNING

Hearing protection is recommended when operating this equipment.



⚠ WARNING

Respiratory protection is recommended when operating this equipment.

- A HEPA Filter must be installed in this vacuum at all times
- If this vacuum is used to collect hazardous material, personal protective equipment should be used when opening the vacuum or emptying its contents
- If this vacuum is intended for Dust Ignition Proof Operation, it must be used with supplied or recommended accessories from Clayton Associates
- Any alteration to this equipment by a third party will nullify its warranty

April 2020

TABLE OF CONTENTS

Table of Contents..... 2

Applications & Environments..... 3

What's Included 3

Getting Started 3

Illustrated Parts Breakdown..... 4

Limited Lifetime Warranty 10

APPLICATIONS & ENVIRONMENTS

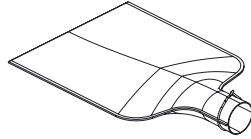
⚠ WARNING:

Do not use this equipment for cleaning or extracting fuel residues from any vehicle or equipment.
Do Not use this equipment in combustible Dust or Gas atmospheres.

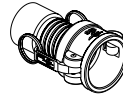
WHAT'S INCLUDED

Clayton Barracuda Tanks ship with the following items:

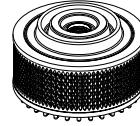
- Hydrophobic HEPA Filter
- Water Level Probe Cable
- Sock Cam Lock Adapter
- Filter Socks
- Continuity Tester
- Ground/Bonding Cable



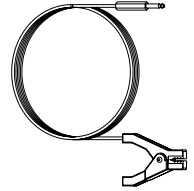
Filter Socks



Sock Cam Lock Adapter



Hydrophobic HEPA Filter



Ground/Bonding Cable

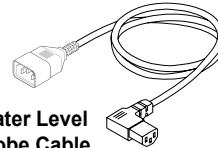
Use only the following Clayton consumables and accessories:

Barracuda Filters

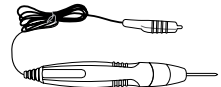
Model	
Filter Socks	627-1218M10
Hydrophobic HEPA	627-12C

Barracuda Accessories

Model	
Water Level Probe Cable	900-183C13PC14S
Grounding Bonding Cable	900-A001-30
Continuity Tester	925-200



Water Level Probe Cable



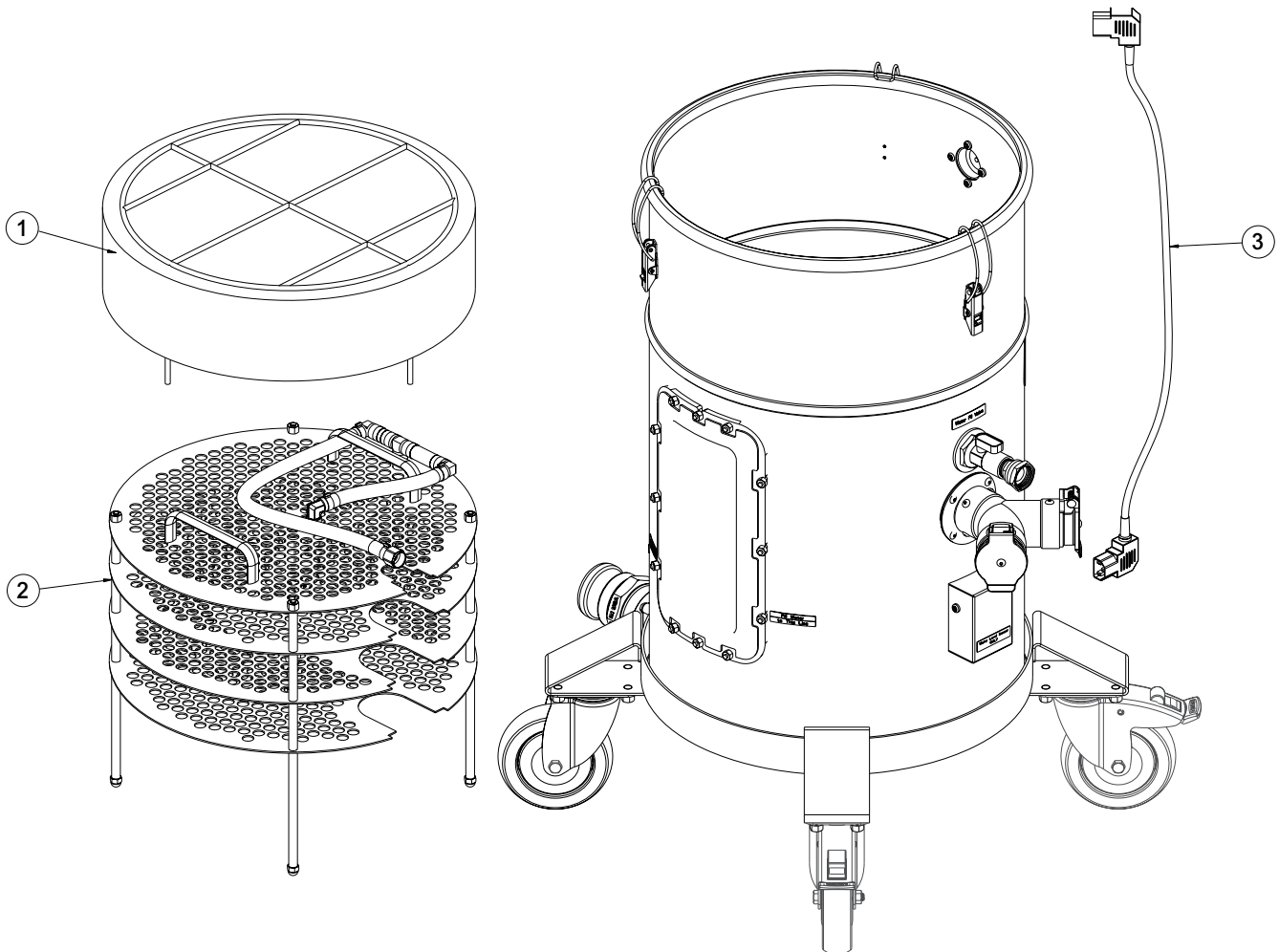
Continuity Tester

GETTING STARTED

1. Remove items shipped in the tank
2. See Power Head instructions for additional steps.

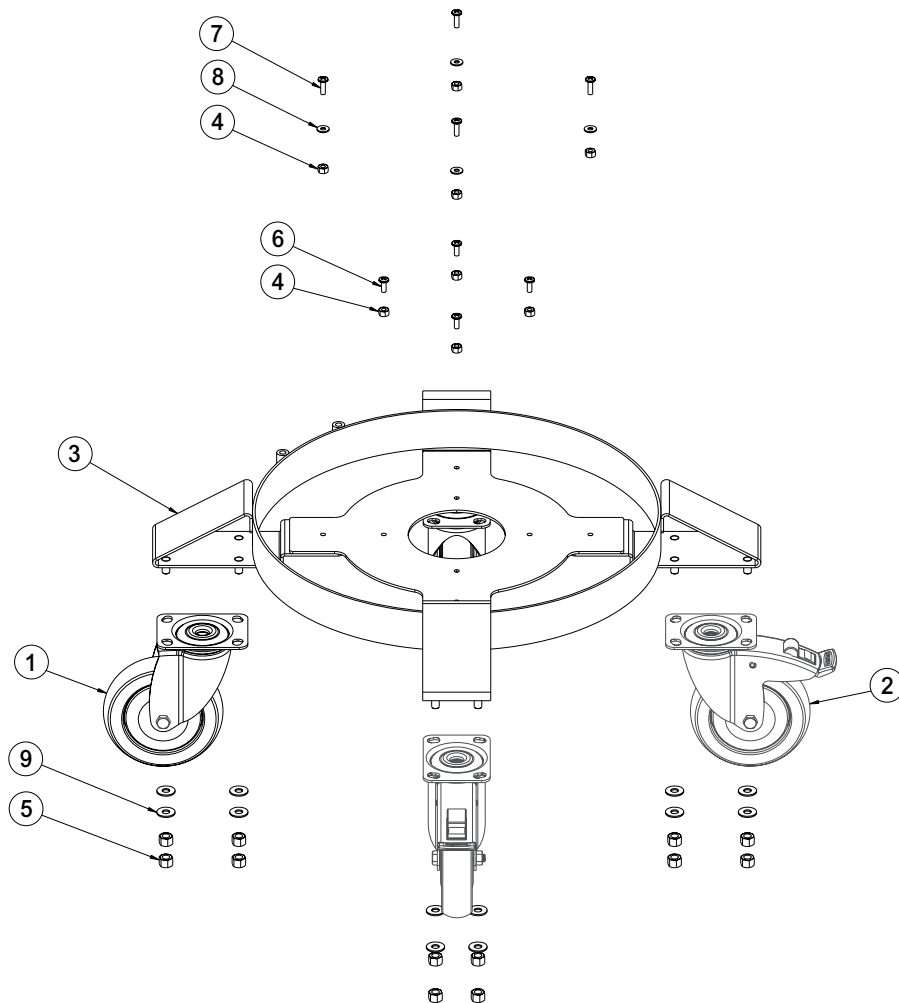
ILLUSTRATED PARTS BREAKDOWN

Seq	Item No	Description
1	627-16C	Coalescing Filter Stainless Steel
2	627-16C1	Coalescing Baffle Stack 1
3	900-183C13PC14S	Cord 18/3 Water Level Sensor IEC 320 2ft Black



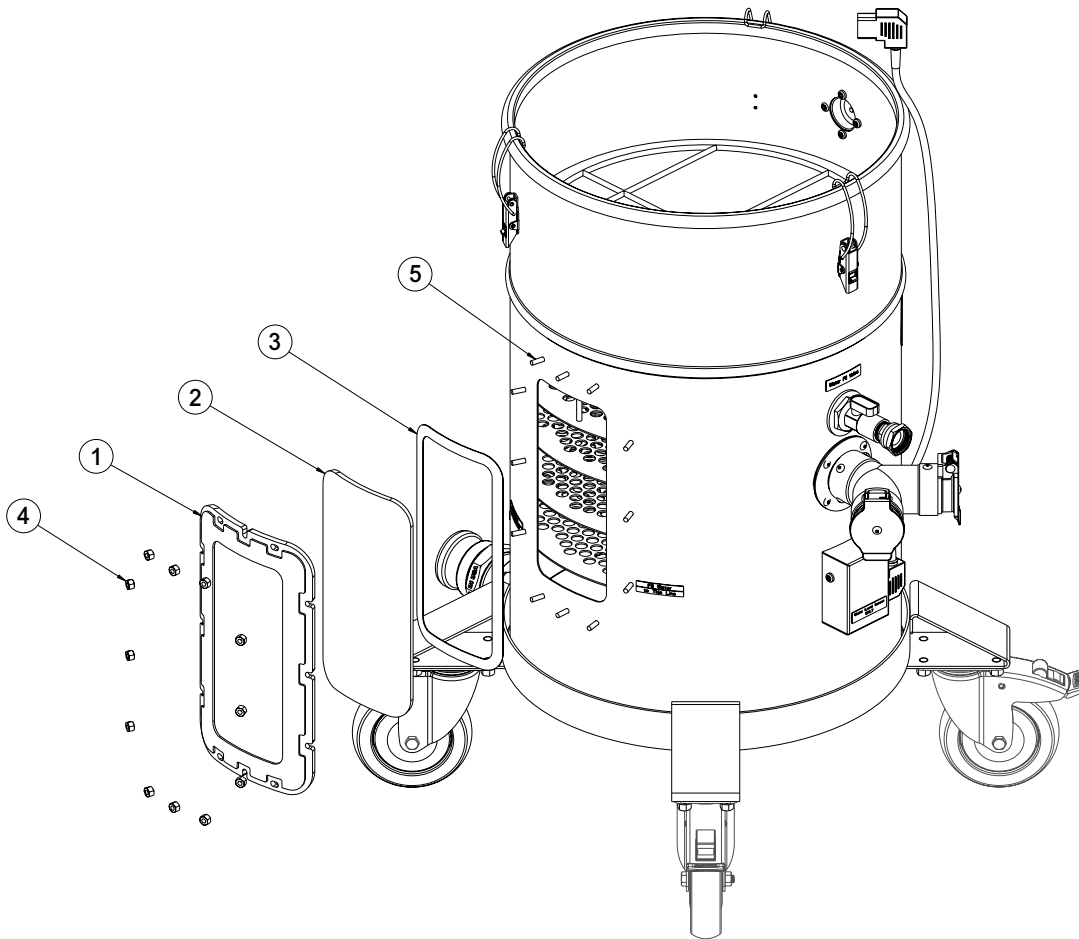
ILLUSTRATED PARTS BREAKDOWN

Seq	Item No	Description
1	600-159.5	Caster Wheel, 5in, Swivel Plate
2	600-159.5LOCK	Caster Wheel, 5in Swivel Lock Plate
3	601-038	Caster Dolly Barracuda SS
4	NE10320615-HNSZ	Nut, 10-32 Nylon Lock, SS, High
5	NE20181623-HNSZ	Nut 5/16-18 Nylon Lock Tall SS
6	SE103208-PPSM-S	Screw, PPH 10-32 X .500 Long Sealing
7	SE103210-PPSM-S	Screw, PPH 10-32 x .625 Long Sealing
8	WE133203-RFS-Z	Washer .203ID X .500OD SS
9	WE204804-RFS-Z	Washer .313ID x .750OD .063H Round Stainless

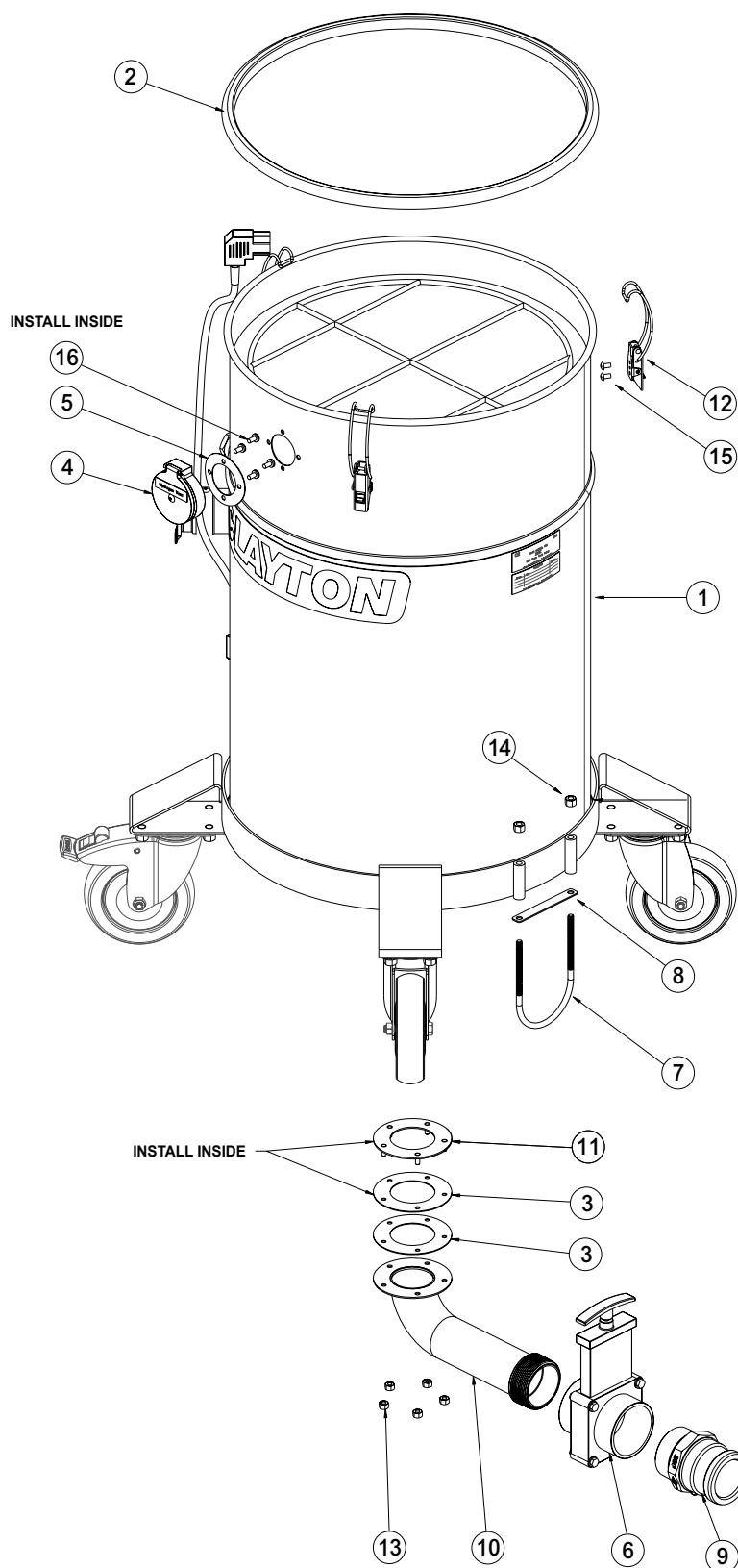


ILLUSTRATED PARTS BREAKDOWN

Seq	Item No	Description
1	601-315F	Barracuda Window Frame
2	610-203	Barracuda Window Polycarbonate
3	911-215	Barracuda and Mini Win Gasket 1/8in
4	NE10320615-HNSZ	Nut, 10-32 Nylon Lock, SS, High
5	SE103210-PPSM-S	Screw, PPH 10-32 x .625 Long Sealing



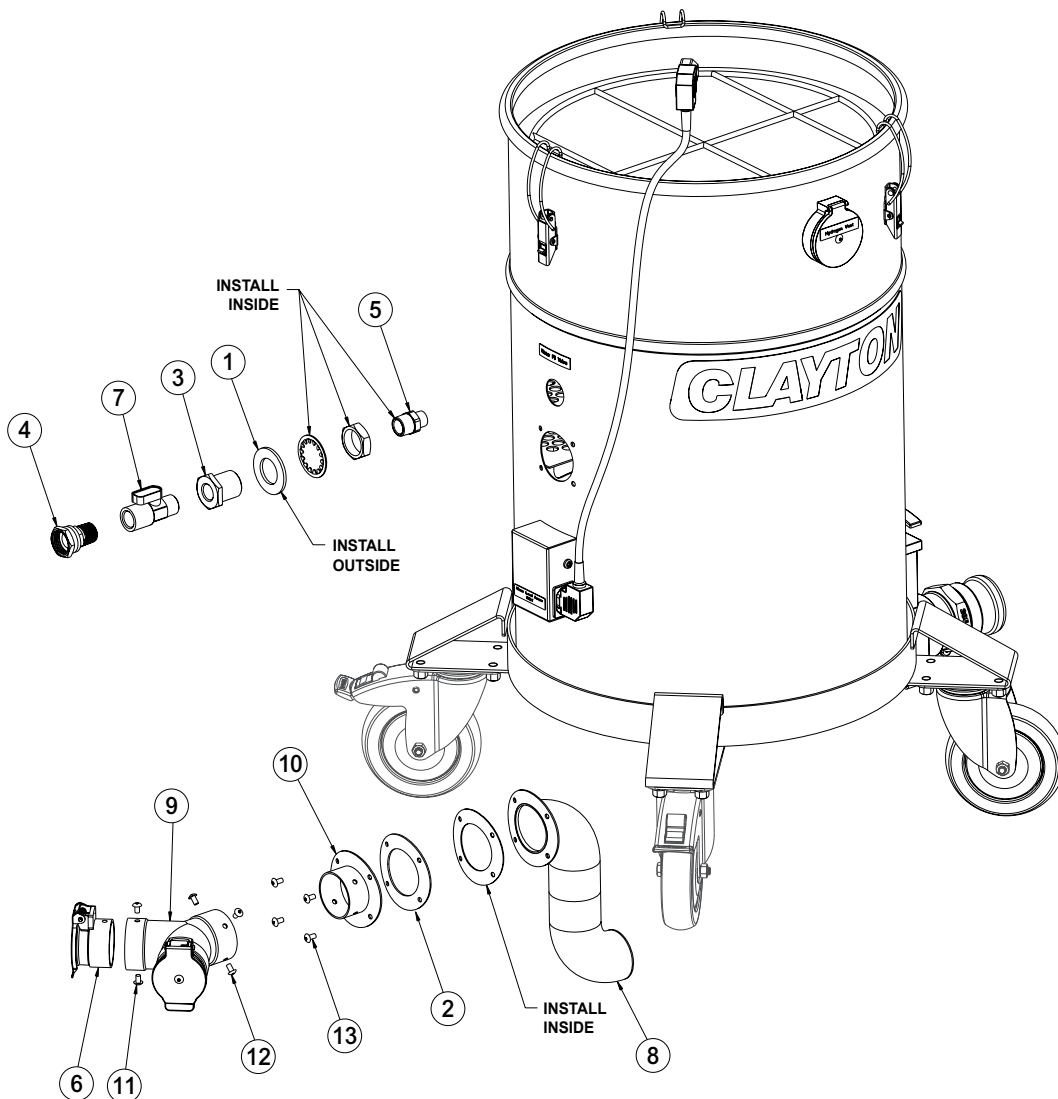
ILLUSTRATED PARTS BREAKDOWN



Seq	Item No	Description
1	601-D162602-S	Vacuum Tank 15 Gal SS MiniCuda
2	911-020	Gasket 16in Molded Silicone
3	911-234	Drain Tube Gasket
4	923-A009	Barracuda Hydrogen Vent Assembly
5	923-A009-4	Gasket Hydrogen Vent Body
6	924-32F32F-GVM	Gate Valve 2in FNPT X 2in FNPT Manual Gate Valve SS Paddle
7	930-153	Round U Bolt SS 1/4-20 x 3.25 x 5-3/32
8	930-153-1	U Bolt Plate
9	940-32PCLM	2in CAM Lock Plug, MNPT
10	942-234	Mini-Cuda Drain Tube SS
11	942-234-3	Drain Tube Flange
12	951-009	Draw Latch SS Wire Bale Locking
13	NE10320615-HNSZ	Nut, 10-32 Nylon Lock, SS, High
14	NE16201420-HNSZ	Nut 1/4-20 HEX Lock SS
15	RE0611-SDSSS-Z	Rivet Blind 3/16 x 0.344 Sealed SS (.02-.125)
16	SE103206-XPSM-Z	Screw 10-32 X 3/8in SS Torx

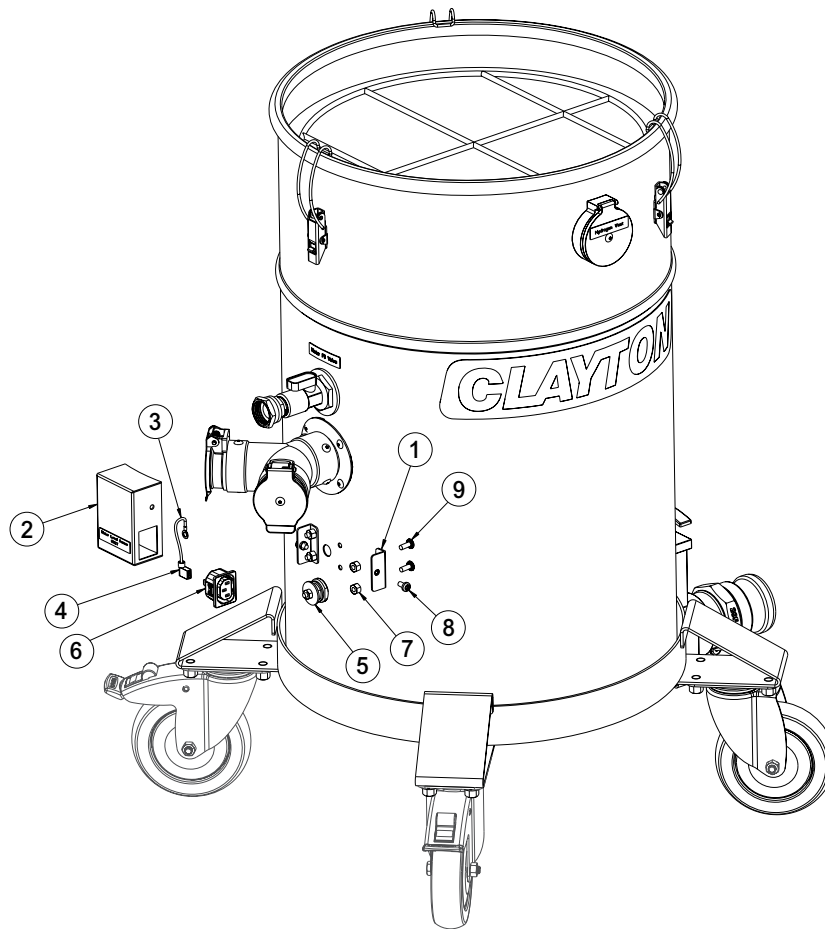
ILLUSTRATED PARTS BREAKDOWN

Seq	Item No	Description
1	600-WF-1125	Washer Fiber 1-1/8 ID x 2 OD Grey
2	911-013S	Gasket Cast Inlet Valve Silicone 1/16in
3	912-08BH	Bulkhead Adapter 1/2in Nickel Plated Brass
4	912-08GH12	FTG Garden Hose 1/2MNPT to 3/4in FGH Nickel Plated Brass
5	918-08HN06	FTG Brass HEX Nipple 1/2IN MNPT x 3/8IN MNPT
6	923-A006-B	Inlet Machined for Barracuda
7	924-0502	Valve, 1/2, MPT X FPT, Ball Valve
8	942-232	Barracuda Inlet Tube SS
9	942-238-1	Barracuda Welded Y
10	942-238-2	Barracuda Y Stub
11	RE0610-SDAAS-Z	Rivet Blind 3/16 x 0.313 Sealed Alum (.063-.125)
12	RE0611-SDSSS-Z	Rivet Blind 3/16 x 0.344 Sealed SS (.02-.125)
13	RE0616-SDSSS-Z	Rivet Blind 3/16 x 0.500 Sealed SS (.126-.250)



ILLUSTRATED PARTS BREAKDOWN

Seq	Item No	Description
1	601-300F	Vacuum Head Gauge Bracket
2	601-316	Mini-Cuda Water Sensor Cover Box
3	900-014	Jumper Wire, Grounding W Ring Term
4	900-018	Flag Quick Disconnect Term .250 X .032 14-16 AWG
5	900-030	Button Probe Assembly Water Level Sensor
6	900-C14R	AC Power Module, C14 Snap In 1-1/2 MM
7	NE10320615-HNSZ	Nut, 10-32 Nylon Lock, SS, High
8	SE103206-XPSM-Z	Screw 10-32 X 3/8in SS TORX
9	SE103208-PPSM-S	Screw, PPH 10-32 X .500 Long Sealing



LIMITED LIFETIME WARRANTY TERMS AND CONDITIONS

Warranty Terms

Clayton Associates, Inc. guarantees its manufactured products against defects in materials or workmanship and will either repair or replace all parts that prove defective under normal use during the lifetime of the products. The warranty period shall commence from the date of paid invoice.

This warranty does not cover (a) repairs due to normal wear, accident, neglect, misuse, or use other than as indicated in the instruction booklet (b) products manufactured by third parties and distributed by Clayton (c) wear items such as bearings, rotor blades, regulators, valve stems, levers, shrouds, guards, O-rings, seals, gaskets, motor brushes, and other wearable parts.

Repair within the Continental US

During the first 90 days of the warranty period, Clayton will provide parts and labor to the customer's site at no charge or pay freight costs associated with returning the products for repair to a Clayton selected service location and repair the product at no charge. Clayton personnel will determine the best way to repair the product.

Past 90 days, Clayton will provide parts to the customer's site at no charge or the customer may ship the product to a Clayton selected service location at customer's expense and Clayton will repair the product at no charge and provide return shipping.

Repair Outside the Continental US

Clayton will provide parts to the customer's site at no charge or the customer may ship the product to a Clayton selected service location at customer's expense and Clayton will repair the product at no charge and provide return shipping.

Limitation of Liability

Clayton shall not in any event be liable for any damages, loss of production time or profits, whether based on contract, warranty, negligence, strict liability or otherwise, including without limitation any consequential, incidental or special damages, arising with respect to the equipment or its failure to operate.

Clayton Associates, Inc. makes no other warranty or representation of any kind, except that of title, and all other warranties, express or implied, including warranties of merchantability or fitness for any particular purpose, are hereby expressly disclaimed.



Clayton products are proudly made in the USA

