

Safety – Operation – Maintenance

Keep this document in a safe place

Read and understand this manual before operating your air tool

CLAYTON
Dustless Made Simple™

WartHog WC Power Head

Electric Industrial HEPA Vacuum

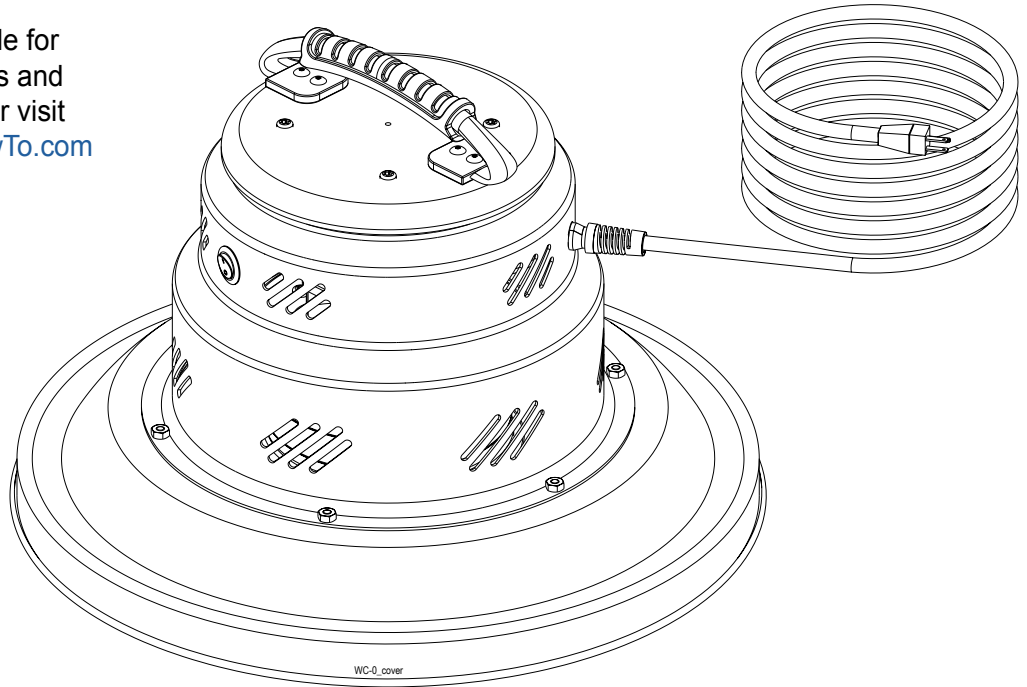
CE

Models: WC-105-0/1, WC-107-0/1, WC-115-0/1, WC-202-0/1, WC-205-0/1, WC-215-0/1, WC-230-0/1,

- Designed for general cleanup and housekeeping
- Dry Recovery Only



Scan this QR code for
online instructions and
documentation, or visit
www.ClaytonHowTo.com



⚠ WARNING

SAFETY LEGEND



⚠ WARNING

Read and understand operator's manual before using this equipment.



⚠ WARNING

Eye protection is required when operating this equipment.



⚠ WARNING

Hearing protection is recommended when operating this equipment.



⚠ WARNING

Respiratory protection is recommended operating this equipment.

⚠ WARNING

- A HEPA Filter must be installed in this vacuum at all times.
- If this vacuum is used to collect hazardous material, appropriate personal protective equipment may be required.
- Any alteration to this equipment by a third party will nullify its warranty.

TABLE OF CONTENTS

Important Safety Instructions.....	3
Applications & Environments.....	4
What's In the Box	4
Specifications & Requirements.....	4
Getting Started	5
Before Each Use	7
Bag Filter Change.....	7
Pre-Filter Change	8
HEPA Filter Change.....	9
Illustrated Parts Breakdown.....	10
Illustrated Parts Breakdown.....	13
Limited Lifetime Warranty Terms And Conditions	16

IMPORTANT SAFETY INSTRUCTIONS

READ ALL INSTRUCTIONS BEFORE USING THIS APPLIANCE

When using an electrical appliance, basic precautions should always be followed, including the following:

WARNING

To reduce the risk of fire, electric shock, or injury:

- **Do not** leave appliance when plugged in. Unplug from outlet when not in use and before servicing.
- This unit is to be used only indoors and in a dry location.
- Use only as described in this manual. Use only manufacturer's recommended attachments.
- **Do not** use with damaged cord or plug. If appliance is not working as it should, has been dropped, damaged, left outdoors, or dropped into water, return it to a service center.
- Handle provided on power head is used only for removal of power head during maintenance.
- Before separation of power head from tank, users must disengage draw latches on tank.
- **Do not** pull or carry by cord, use cord as a handle, close a door on cord, or pull cord around sharp edges or corners.
- **Do not** run appliance over cord. Keep cord away from heated surfaces.
- **Do not** unplug by pulling on cord. To unplug, grasp the plug, not the cord.
- **Do not** handle plug or appliance with wet hands.
- **Do not** put any object into openings. **Do not** use with any opening blocked; keep free of dust, lint, hair, and anything that may reduce air flow.
- Keep hair, loose clothing, fingers, and all parts of body away from openings and moving parts.
- Turn off all controls before unplugging.
- **Do not** use to pick up flammable or combustible liquids, such as gasoline, or use in areas where they may be present.
- Connect to a properly grounded outlet only. Refer to "EARTHING/GROUNDING INSTRUCTIONS" on page 3.
- **Do not** pick up anything that is burning or smoking, such as cigarettes, matches, or hot ashes.
- **Do not** use without all filters in place.
- **Do not** allow to be used as a toy. Close attention necessary when used by or near children.
- Use extra care when cleaning on stairs.

SAVE THESE INSTRUCTIONS

EARTHING/GROUNDING INSTRUCTIONS

This appliance must be earthed/grounded. If it should malfunction or breakdown, earthing/grounding provides a path of least resistance for electric current to reduce the risk of electric shock. This appliance is equipped with a cord having an equipment-earthing/grounding conductor and earthing/grounding plug. The plug must be inserted into an appropriate outlet that is properly installed and earthed/grounded in accordance with all local codes and ordinances.

WARNING – Improper connection of the equipment-earthing/grounding conductor can result in a risk of electric shock. Check with a qualified electrician or service person if you are in doubt as to whether the outlet is properly earthed/grounded. Do not modify the plug provided with the appliance – if it will not fit the outlet, have a proper outlet installed by a qualified electrician.

Refer to Name Plate for electrical requirements.

• USA 120 V

This appliance has a earthing/grounding attachment plug that looks like the plug illustrated in Figure 1. Make sure that the appliance is connected to an outlet having the same configuration as the plug. No adapter should be used with this appliance.

• International 120 V

This appliance has an IEC 60309 120 V earthing/grounding attachment plug. Make sure that the appliance is connected to an outlet having the same configuration as the plug. No adapter should be used with this appliance.

• International 220 V – 240 V

This appliance has an IEC 60309 250 V earthing/grounding attachment plug. Make sure that the appliance is connected to an outlet having the same configuration as the plug. No adapter should be used with this appliance.

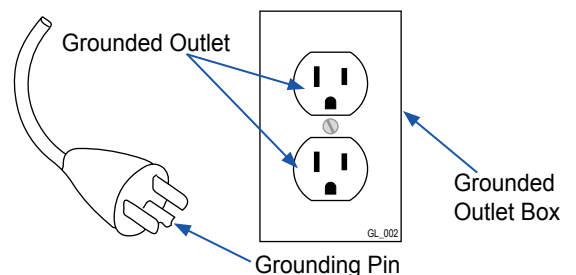


Figure 1: Earthed/Grounded Outlet and Plug

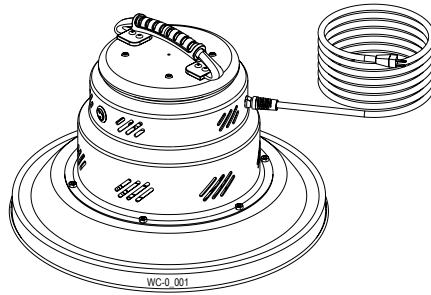
APPLICATIONS & ENVIRONMENTS

- Designed for general cleanup and housekeeping.
- Dry recovery only.

⚠ WARNING

Do not use this equipment for cleaning or extracting fuel residues from any vehicle or equipment.
Do not use this equipment for cleaning or extracting live sparks or burning embers.
Do not use this equipment in combustible dust or gas atmospheres.

WHAT'S IN THE BOX



Warthog WC Power Head

NOTE: Clayton vacuum tanks ship in their own box and include bags, filters, and other components. These instructions assume you have both a power head and an appropriate Clayton vacuum tank. Refer to the instruction manual included with the vacuum tank for additional information.

SPECIFICATIONS & REQUIREMENTS

PHYSICAL:

603-WC-0

Weight TBD lbs (TBD kg)
Dimensions (Diameter x Height) 17.00 x 9.25 in (43.2 x 23.5 cm)

612-WC-0

Weight TBD lbs (TBD kg)
Dimensions (Diameter x Height) 12.50 x 9.25 in (31.8 x 23.5 cm)

619-WC-0/619-WC-1

Weight TBD lbs (TBD kg)
Dimensions (Diameter x Height) 19.50 x 9.25 in (49.5 x 23.5 cm)

Sound Level 83 dBA

POWER CONSUMPTION:

Power Rating 2 hp
Input Power 11.4 A @ 120Vac / 220 – 240 Vac

FILTRATION:

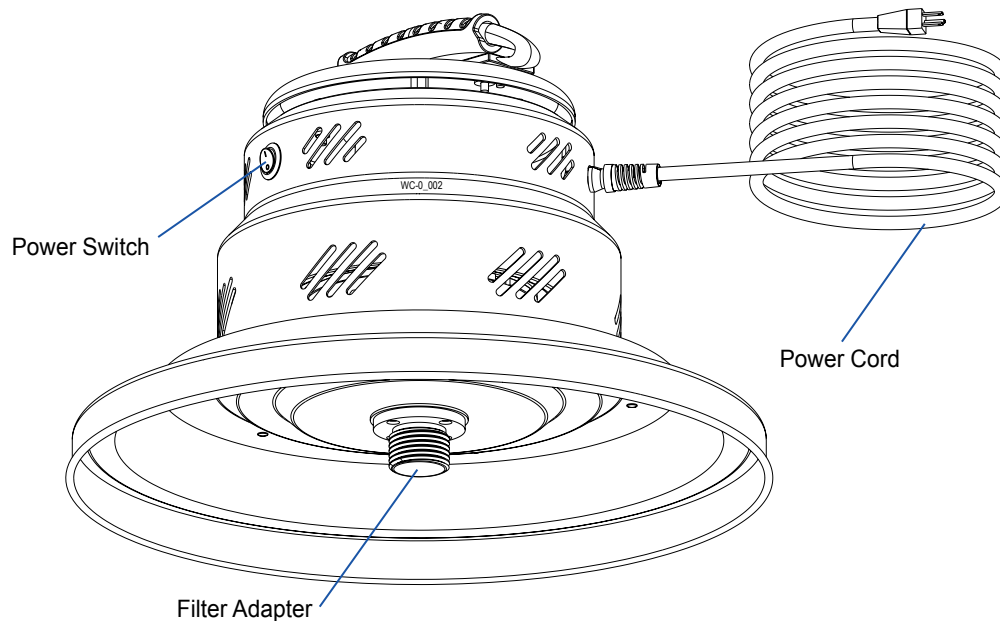
HEPA Filter Efficiency 99.995% @ 0.3 µm (H14)
Filter Bag Efficiency 95% @ 0.5 micron

PERFORMANCE:

Vacuum Flow 120 V: 105 CFM (179 SCMH)
220 – 240 V: 100 CFM (170 SCMH)
Vacuum Suction 120 V: 110 inH₂O (27 kPa)
220 – 240 V: 105 inH₂O (26 kPa)

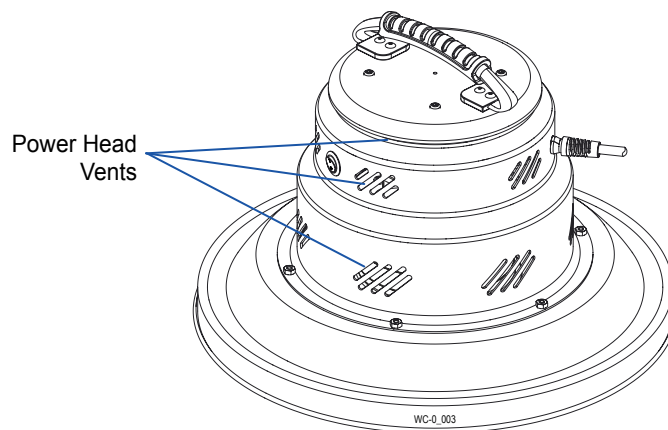
GETTING STARTED

1. The vacuum power head and the vacuum tank ship in separate boxes.
2. Unbox the vacuum power head.
3. Visually inspect the power head to verify that no parts are missing or damaged.
4. Familiarize yourself with the power head.



⚠ WARNING

5. Power Head Vents:
- NEVER BLOCK THE POWER HEAD VENTS.
 - NEVER WRAP THE POWER CORD AROUND THE POWER HEAD VENTS.

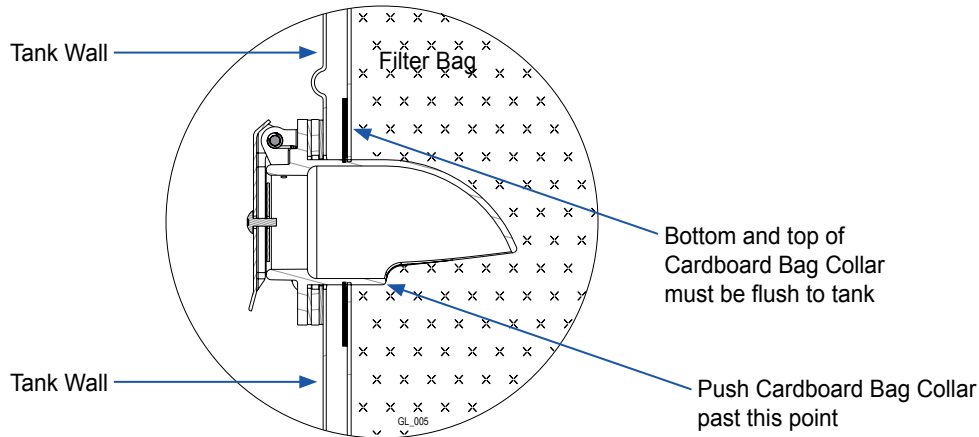


GETTING STARTED

Prepare the vacuum for use.

1. Install a filter bag on the tank.

- Unfold and fluff a new filter bag.
- Push the inlet tube into the hole on the cardboard collar of the filter bag.
- Grasp the sides of the cardboard collar and push it all the way onto the inlet tube.
- Verify the bottom of the collar is past the opening on the underside of the inlet tube.



2. Unbox a new HEPA filter.

- Remove the Clayton HEPA timer card from the box and set aside.
- Remove the HEPA cable lock from the box and set aside.
- Remove the HEPA filter from the box and remove from plastic bag.

3. Install a new HEPA filter.

- Holding the power head on its side, screw the new HEPA filter onto the filter adapter.
- Verify the white inner ring of the HEPA filter is fully seated against the underside of the power head.
 - If it is not, rotate it clockwise until fully seated.
- Refer to the instructions included with the HEPA cable lock to install the cable lock.

4. Attach the power head.

- Position the power head on the tank.
- Rotate the power head so that the power switch on the power head is aligned with the inlet port on the vacuum tank.
- Latch the power head to the tank.

5. Activate the HEPA filter timer.

- Attach the new HEPA timer card with a zip tie (included) to the top handle of the vacuum.
- Follow the directions on timer card to activate it.

BEFORE EACH USE

1. Attach the vacuum hose.

- Open the Inlet Port on the vacuum tank.
- Insert the metal sleeve of the vacuum hose into the Inlet Port on the vacuum tank.

2. Plug the power head/vacuum into an appropriate outlet.

3. Activate the vacuum.

- Toggle the power switch to the ON position.

BAG FILTER CHANGE

If this vacuum is used to collect hazardous material, appropriate personal protective equipment may be required.

The bag filter should be replaced when $\frac{3}{4}$ full.

1. Safe the vacuum.

- Disconnect the vacuum from power source.
- Remove all hoses from the vacuum.

2. Remove the power head.

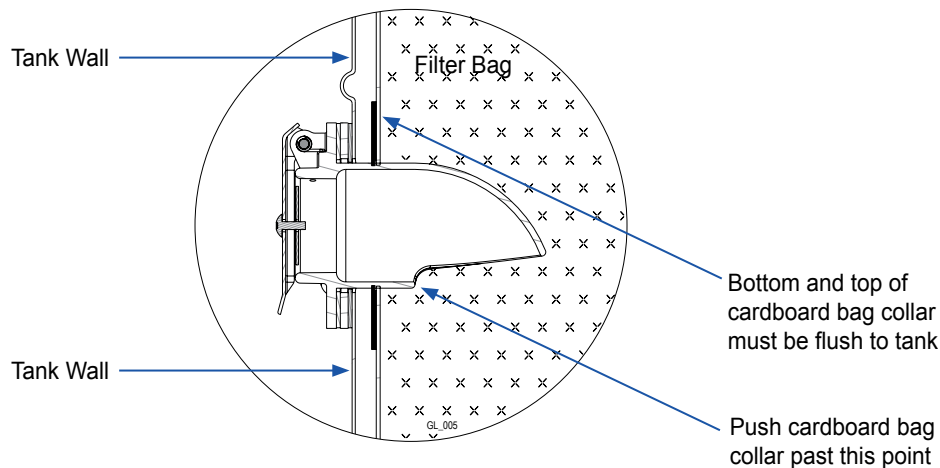
- Unlatch the power head from the tank.
- Lift the power head and the attached HEPA filter off the tank using the top handle.
- Carefully place the power head on the floor – avoid damaging the HEPA filter.

3. Remove the filter bag.

- Grasp the cardboard collar of the bag filter and slide it off the inlet port on the vacuum tank.
- Holding your hand over the opening on the bag, lift the bag out of the tank.
- Dispose of the bag according to company policy.

4. Install a new filter bag.

- Unfold and fluff a new filter bag.
- Push the inlet tube into the hole on the cardboard collar of the filter bag.
- Grasp the sides of the cardboard collar and push it all the way onto the inlet tube.
- Verify the bottom of the collar is past the opening on the underside of the inlet tube.



continued on next page

BAG FILTER CHANGE

5. Verify the HEPA filter is seated.

- Holding the power head on its side, examine the HEPA Filter.
- Verify the white inner ring of the HEPA filter is fully seated against the underside of the power head.
 - If it is not, rotate it clockwise until fully seated.

6. Replace the power head.

- Position the power head on the tank.
- Rotate the power head so that the power switch on the power head is aligned with the inlet port on the vacuum tank.
- Latch the power head to the tank.

PRE-FILTER CHANGE

If this vacuum is used to collect hazardous material, appropriate personal protective equipment may be required.

Replace the pre-filter every five (5) bag filter changes or when it becomes visibly dirty.

1. Safe the vacuum.

- Disconnect the vacuum from the power source.
- Remove all hoses from the vacuum.

2. Remove the power head.

- Unlatch the power head from the tank.
- Lift the power head and the attached HEPA filter off the tank using the top handle.
- Carefully place the power head on the floor – avoid damaging the HEPA filter.

3. Remove the pre-filter.

- The pre-filter is wrapped around the HEPA filter and secured with Velcro.
- Find the seam and carefully peel the Velcro apart.
- Dispose of the pre-filter according to company policy.

4. Install a new pre-filter.

- Unfold a new pre-filter and remove the thin Velcro cover strip from the Velcro hooks.
- Wrap the pre-filter tightly around the HEPA filter.
- Secure the pre-filter by adhering the Velcro hooks to the side of the pre-filter.

5. Verify the HEPA filter is seated.

- Holding the power head on its side, examine the HEPA Filter.
- Verify the white inner ring of the HEPA filter is fully seated against the underside of the power head.
 - If it is not, rotate it clockwise until fully seated.

6. Replace the power head.

- Position the power head on the vacuum tank.
- Rotate the power head so that the power switch on the power head is aligned with the inlet port on the vacuum tank.
- Latch the power head to the tank.

HEPA FILTER CHANGE

If this vacuum is used to collect hazardous material, appropriate personal protective equipment may be required.

The HEPA filter should be replaced when it is damaged, clogged, or when the HEPA timer card has reached 12 months. *Never attempt to clean the HEPA filter as this will damage it.*

1. Safe the vacuum.

- Disconnect the vacuum from the power source.
- Remove all hoses from the vacuum.

2. Remove the power head.

- Unlatch the power head from the vacuum tank.
- Lift the power head and the attached HEPA filter off the tank using the top handle.
- Carefully place the power head on the floor – avoid damaging the HEPA filter.

3. Unbox a new HEPA filter.

- Remove the Clayton HEPA timer card from the box and set aside.
- Remove the HEPA cable lock from the box and set aside.
- Remove the HEPA filter from the box and remove it from the plastic bag.

4. Remove the old HEPA filter.

- Holding the power head on its side cut the HEPA cable lock and remove it.
- Unscrew the HEPA filter from the filter adapter.
- Dispose of the HEPA filter according to company policy.

5. Install a new HEPA Filter

- Holding the power head on its side, screw the new HEPA filter onto the threaded filter adapter.
- Verify the white inner ring of the HEPA filter is fully seated against the underside of the power head.
 - If it is not, rotate it clockwise until fully seated.
- Refer to the instructions included with the HEPA cable lock to install the cable lock.

6. Replace the power head.

- Carefully position the power head on the vacuum tank.
- Rotate the power head so that the power switch on the power head is aligned with the inlet port on the vacuum tank.
- Latch the power head to the vacuum tank.

7. Activate the HEPA filter timer.

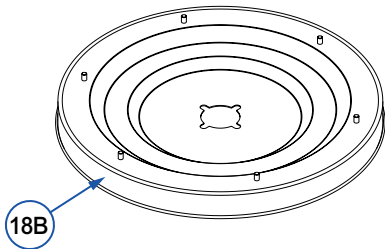
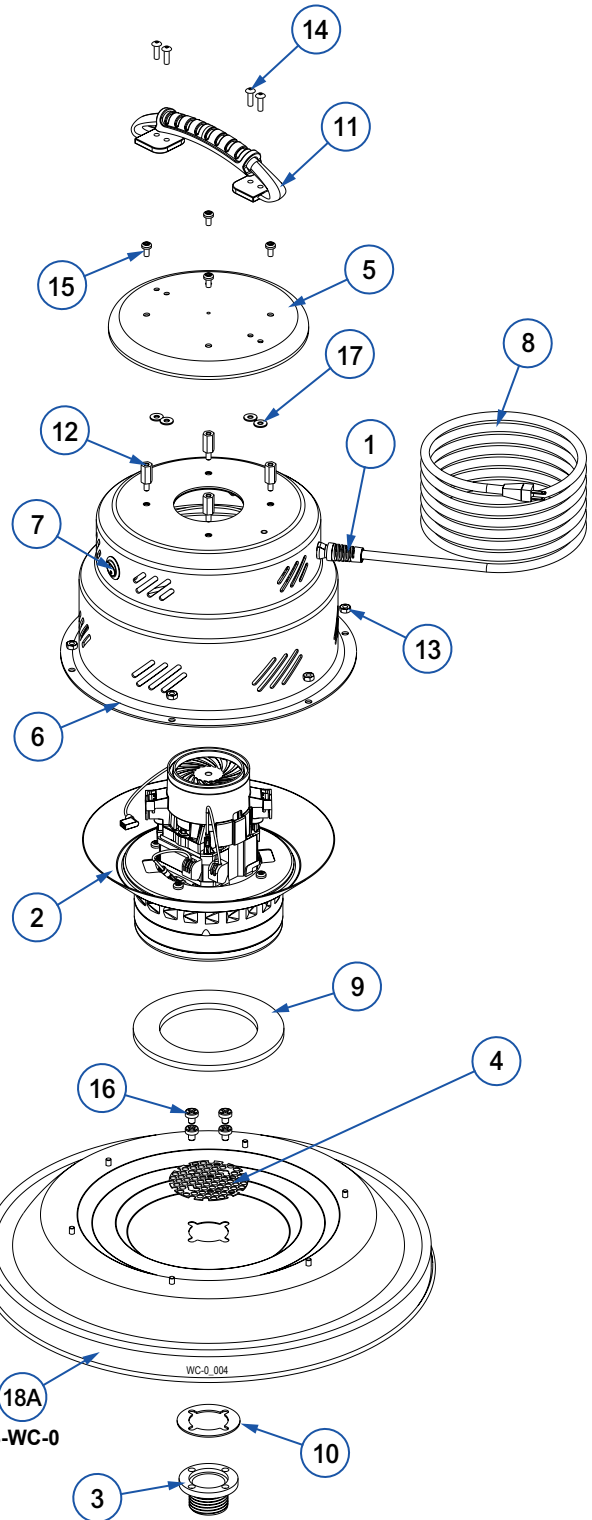
- Remove the old HEPA timer card from the power head.
- Attach the new HEPA timer card with a zip tie (included) to the top handle of the vacuum.
- Follow the directions on the timer card to activate.

ILLUSTRATED PARTS BREAKDOWN

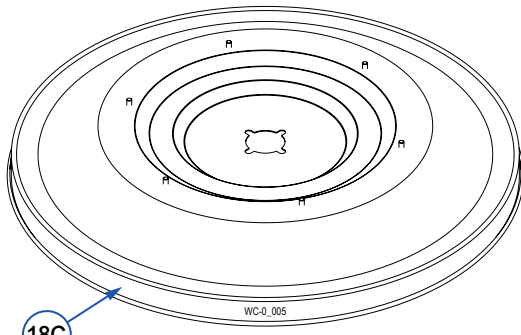
120 V Power Head (All Diameters)

6xx-WC-0 (Sheet 1 of 3)

Seq	Item No	Description
1	350-022	Strain Relief With Pigtail Heyco SR6N3-7
2	600-A107-120	Motor Assembly 120V
3	601-021	Filter Adapter, WartHog
4	601-121	Mesh Disc, 3 in Diameter
5	601-300A	Vac Head Cap Alum Black
6	601-301E	Vac Head Shell Elec Cleanup Alum Black
7	900-017	Switch Rocker Round 20A 125V On Off
8	900-163N515P-30	Cord 16/3 15A Cord Lock Plug 30 ft Yel
9	911-003	Gasket WartHog Motor Bottom
10	911-011	Gasket, Filter Adapter
11	930-027	Handle, Carry, Flex Rubber
12	FE103212-HZSM-Z	Hex Standoff, 10-32 MF x 3/4 in SS
13	NE10320608-HNSZ	Nut 10-32 Nylon Lock SS Short
14	RE0620-SDSSS-Z	Rivet Blind 3/16 x 0.625 Sealed SS (.251-.375)
15	SE103206-XPSM-Z	Screw 10-32 x 3/8 in SS TORX
16	SE162005-PPSM-Z	Screw, 1/4-20 x 5/16 Ph, SS
17	WE133203-RFS-Z	Washer .203ID x .500OD .047H Round SS
18A	601-300B16	Vac Head Base 16 in CRS Black
18B	601-300B12	Vac Head Base 12 in CRS Black
18C	601-300B19	Vac Head Base 19 in CRS Black



FOR 612-WC-0



FOR 619-WC-0

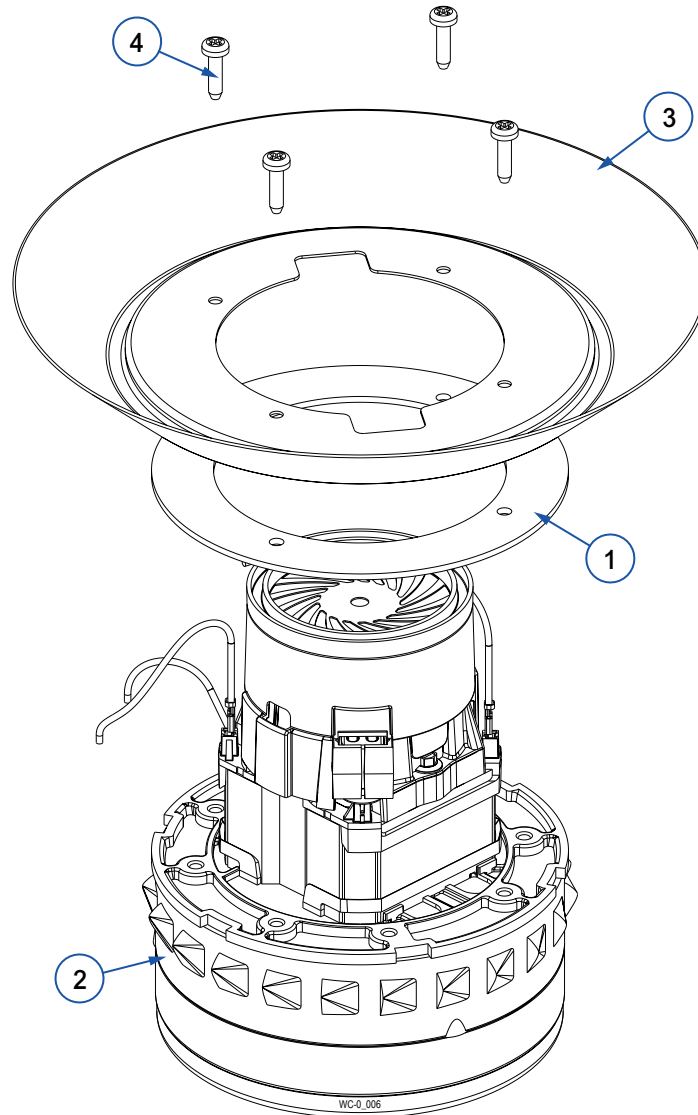
FOR 603-WC-0

ILLUSTRATED PARTS BREAKDOWN

120 V Power Head (All Diameters)

6xx-WC-0 (Sheet 2 of 3)

Seq	Item No	Description
1	600-119	Gasket WarHog Motor Middle
2	600-QM6600-202T	Motor Bypass 120V 12.3A 2HP110CFM
3	601-300C	Vac Head Motor Collar CRS Chem Film
4	SE101212-PPSS-Z	Screw, Sheet Metal, #10 X .750, Phillips, SS

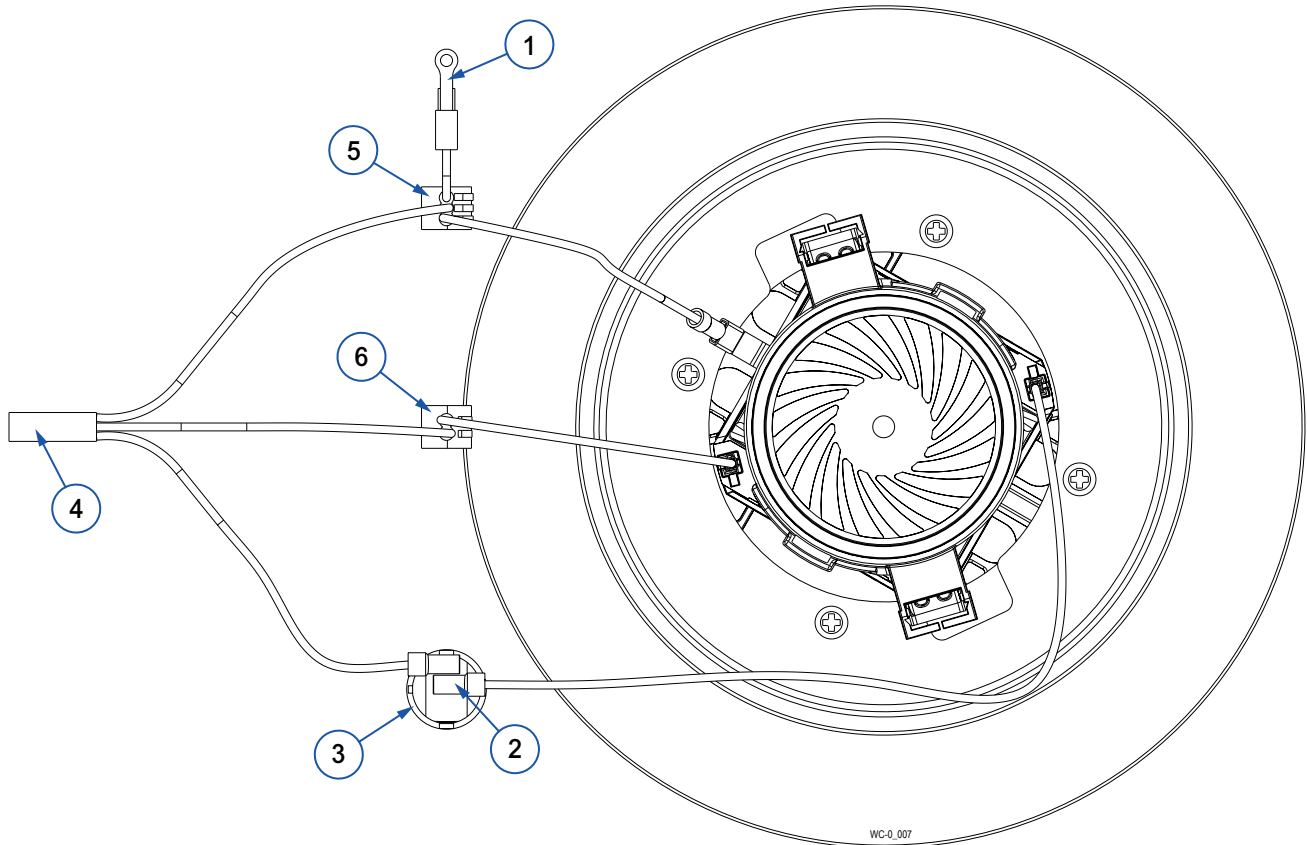


ILLUSTRATED PARTS BREAKDOWN

120 V Power Head (All Diameters)

6xx-WC-0 (Sheet 3 of 3)

Seq	Item No	Description
1	900-014	Jumper Wire, Grounding w/ Ring Term
2	900-017	Switch Rocker Round 20A 125V On Off
3	900-026	Flag Quick Disconnect Term .187X.032 Tab 14-16 AWG
4	900-163N515P-30	Cord 16/3 15A Cord Lock Plug 30 ft Yel
5	900-WAG-221-412	Wago 2 Wire Connector
6	900-WAG-221-413	Wago 3 Wire Connector

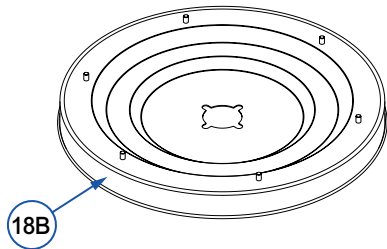


ILLUSTRATED PARTS BREAKDOWN

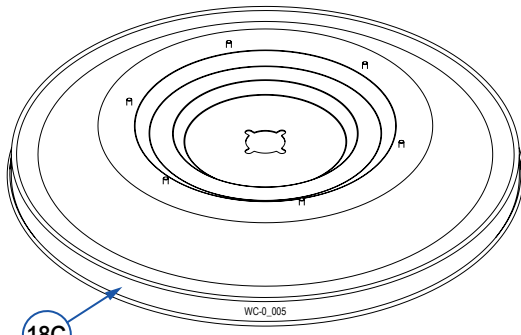
220 V Power Head (All Diameters)

619-WC-1 (Sheet 1 of 3)

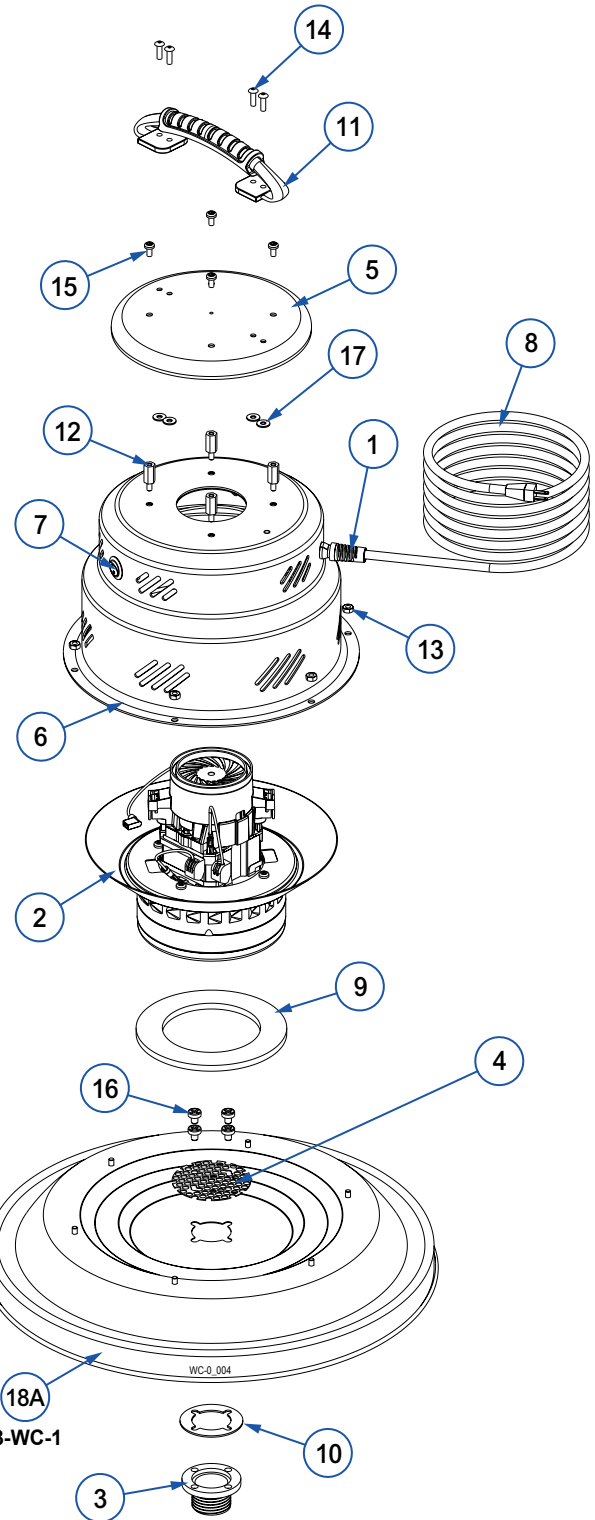
Seq	Item No	Description
1	350-022	Strain Relief With Pigtail Heyco SR6N3-7
2	600-118-116352	Motor 220V Bypass 1.8HP
3	601-021	Filter Adapter, WartHog
4	601-121	Mesh Disc, 3 in Diameter
5	601-300A	Vac Head Cap Alum Black
6	601-301E	Vac Head Shell Elec Cleanup Alum Black
7	900-024	Switch Rocker Round 10A 250V On Off
8	900-163N515P-30	Cord 16/3 15A Cord Lock Plug 30 ft Yel
9	911-003	Gasket WartHog Motor Bottom
10	911-011	Gasket, Filter Adapter
11	930-027	Handle, Carry, Flex Rubber
12	FE103212-HZSM-Z	Hex Standoff, 10-32 MF x 3/4 in SS
13	NE10320608-HNSZ	Nut 10-32 Nylon Lock SS Short
14	RE0620-SDSSS-Z	Rivet Blind 3/16 x 0.625 Sealed SS (.251-.375)
15	SE103206-XPSM-Z	Screw 10-32 x 3/8 in SS TORX
16	SE162005-PPSM-Z	Screw, 1/4-20 x 5/16 Ph, SS
17	WE133203-RFS-Z	Washer .203ID x .500OD .047H Round SS
18A	601-300B16	Vac Head Base 16 in CRS Black
18B	601-300B12	Vac Head Base 12 in CRS Black
18C	601-300B19	Vac Head Base 19 in CRS Black



FOR 612-WC-1



FOR 619-WC-1



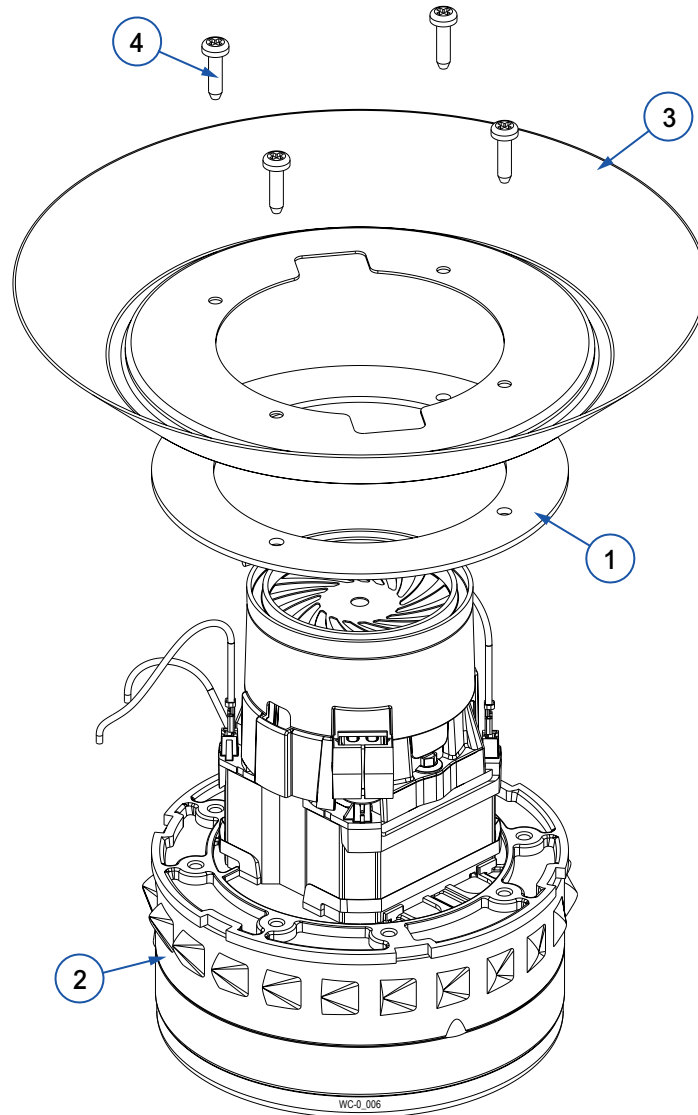
FOR 603-WC-1

ILLUSTRATED PARTS BREAKDOWN

220 V Power Head (All Diameters)

619-WC-1 (Sheet 2 of 3)

Seq	Item No	Description
1	600-119	Gasket WarHog Motor Middle
2	600-118-116352	Motor 220V Bypass 1.8HP
3	601-300C	Vac Head Motor Collar CRS Chem Film
4	SE101212-PPSS-Z	Screw, Sheet Metal, #10 X .750, Phillips, SS

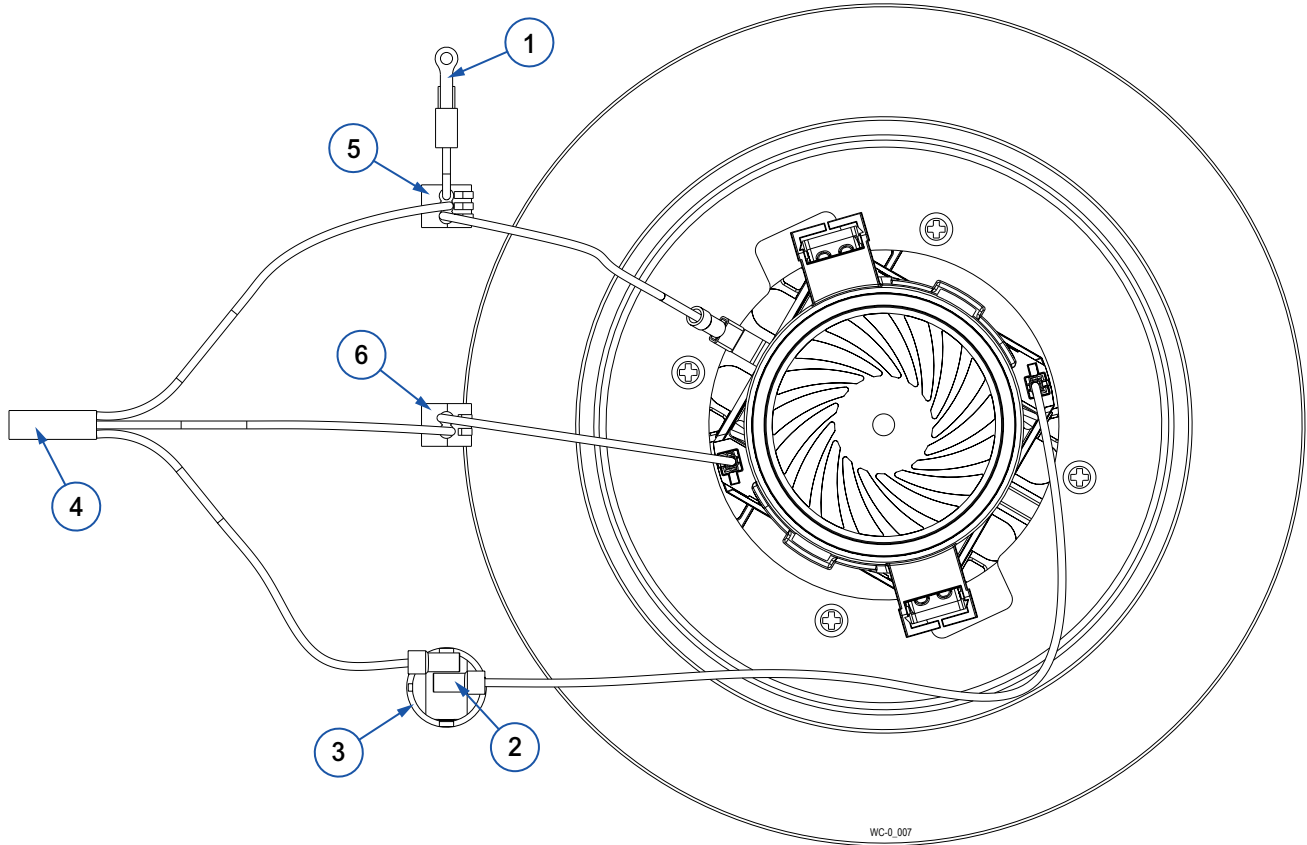


ILLUSTRATED PARTS BREAKDOWN

220 V Power Head (All Diameters)

619-WC-1 (Sheet 3 of 3)

Seq	Item No	Description
1	900-014	Jumper Wire, Grounding w/ Ring Term
2	900-017	Switch Rocker Round 20A 125V On Off
3	900-025	STR Quick Disconnect Term .187X.032 Tab 14-16 AWG
4	900-153H000X-30	Cord 1.5MM 3 Conductor H05VVF 30ft Black
5	900-WAG-221-412	Wago 2 Wire Connector
6	900-WAG-221-413	Wago 3 Wire Connector



LIMITED LIFETIME WARRANTY TERMS AND CONDITIONS

Warranty Terms

Clayton Associates, Inc. guarantees its manufactured products against defects in materials or workmanship and will either repair or replace all parts that prove defective under normal use during the lifetime of the products. The warranty period shall commence from the date of paid invoice.

This warranty does not cover (a) repairs due to normal wear, accident, neglect, misuse, or use other than as indicated in the instruction booklet (b) products manufactured by third parties and distributed by Clayton (c) wear items such as bearings, rotor blades, regulators, valve stems, levers, shrouds, guards, O-rings, seals, gaskets, motor brushes, and other wearable parts.

Repair within the Continental US

During the first 90 days of the warranty period, Clayton will provide parts and labor to the customer's site at no charge or pay freight costs associated with returning the products for repair to a Clayton selected service location and repair the product at no charge. Clayton personnel will determine the best way to repair the product.

Past 90 days, Clayton will provide parts to the customer's site at no charge or the customer may ship the product to a Clayton selected service location at customer's expense and Clayton will repair the product at no charge and provide return shipping.

Repair Outside the Continental US

Clayton will provide parts to the customer's site at no charge or the customer may ship the product to a Clayton selected service location at customer's expense and Clayton will repair the product at no charge and provide return shipping.

Limitation of Liability

Clayton shall not in any event be liable for any damages, loss of production time or profits, whether based on contract, warranty, negligence, strict liability or otherwise, including without limitation any consequential, incidental or special damages, arising with respect to the equipment or its failure to operate.

Clayton Associates, Inc. makes no other warranty or representation of any kind, except that of title, and all other warranties, express or implied, including warranties of merchantability or fitness for any particular purpose, are hereby expressly disclaimed.

THIS PAGE IS INTENTIONALLY BLANK



Clayton products are proudly made in the USA

