

## Safety – Operation – Maintenance

Keep this document in a safe place

Read and understand this manual before operating your air tool



# WartHog WH Power Head

CE

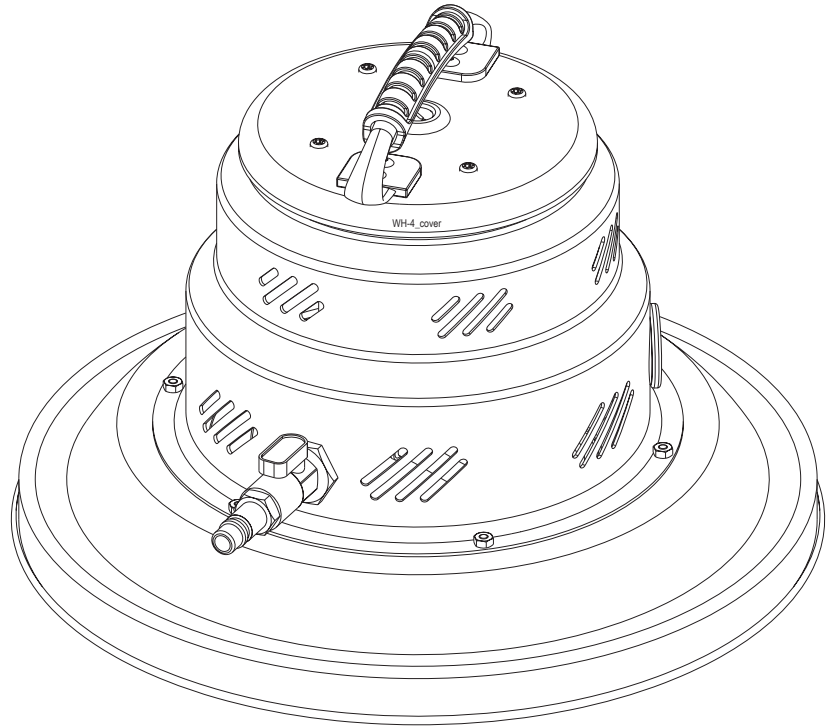
## Pneumatic Industrial HEPA Vacuum

Models: WH-105-4, WH-107-4, WH-115-4, WH-202-4, WH-205-4, WH-215-4

- Designed for toxic dust cleanup, housekeeping, and vacuum sanding
- Dry Recovery Only



Scan this QR code for  
online instructions and  
documentation, or visit  
[www.ClaytonHowTo.com](http://www.ClaytonHowTo.com)



## ⚠ WARNING

### SAFETY LEGEND



#### ⚠ WARNING

Read and understand operator's manual before using this equipment.



#### ⚠ WARNING

Eye protection is required when operating this equipment.



#### ⚠ WARNING

Hearing protection is recommended when operating this equipment.



#### ⚠ WARNING

Respiratory protection is recommended operating this equipment.

### ⚠ WARNING

- A HEPA Filter must be installed in this vacuum at all times.
- If this vacuum is used to collect hazardous material, appropriate personal protective equipment may be required.
- Any alteration to this equipment by a third party will nullify its warranty.

## TABLE OF CONTENTS

Applications & Environments.....	3
What's In the Box .....	3
Specifications & Requirements.....	3
Getting Started .....	4
Compressed Air Fittings .....	6
Before Each Use .....	6
Bag Filter Change.....	7
Safe Filter Change.....	8
Pre-Filter Change .....	9
HEPA Filter Change.....	10
Illustrated Parts Breakdown.....	11
Limited Lifetime Warranty Terms And Conditions .....	14

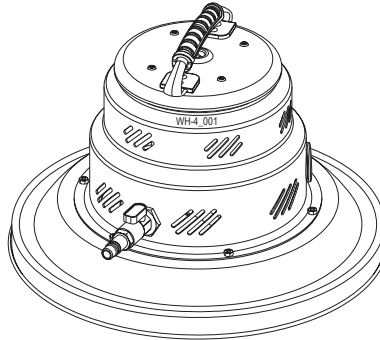
## APPLICATIONS & ENVIRONMENTS

- Designed for toxic dust cleanup, housekeeping, and vacuum sanding.
- Dry recovery only.

### **⚠ WARNING**

**Do not use this equipment for cleaning or extracting fuel residues from any vehicle or equipment.**  
**Do not use this equipment for cleaning or extracting live sparks or burning embers.**  
**Do not use this equipment in combustible dust or gas atmospheres.**

## WHAT'S IN THE BOX



WarHog WH Power Head

**NOTE:** Clayton vacuum tanks ship in their own box and include bags, filters, and other components. These instructions assume you have both a power head and an appropriate Clayton vacuum tank. Refer to the instruction manual included with the vacuum tank for additional information.

## SPECIFICATIONS & REQUIREMENTS

### PHYSICAL:

#### 603-WH-4

Weight ..... TBD lbs (TBD kg)  
Dimensions (Diameter x Height) ..... 17.00 x 9.25 in (43.2 x 23.5 cm)

#### 612-WH-4

Weight ..... TBD lbs (TBD kg)  
Dimensions (Diameter x Height) ..... 12.50 x 9.25 in (31.8 x 23.5 cm)

Sound Level ..... 79 dBA

### POWER CONSUMPTION:

Pressure ..... 90 psi (621 kPa)  
Flow ..... 60 CFM (102 SCMH)

### FILTRATION:

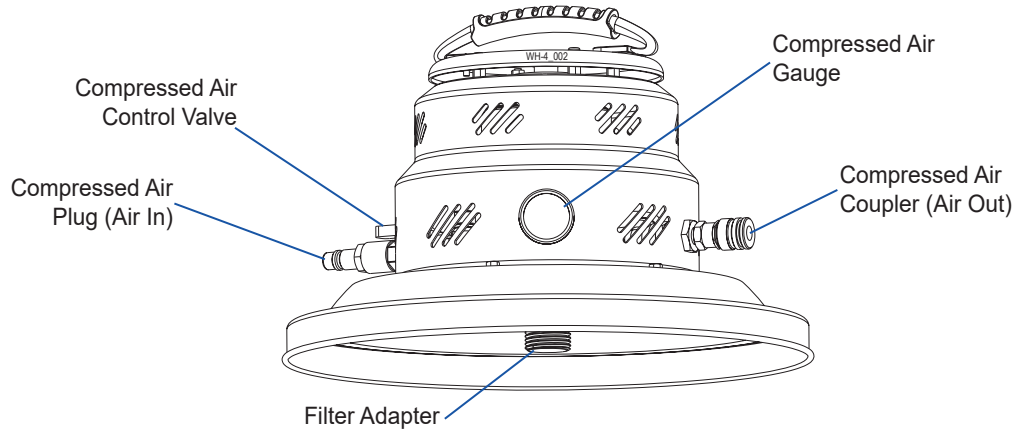
HEPA Filter Efficiency ..... 99.995% @ 0.3  $\mu$ m (H14)  
Filter Bag Efficiency ..... 95% @ 0.5 micron

### PERFORMANCE:

Vacuum Flow ..... 105 CFM (179 SCMH)  
Vacuum Suction ..... 180 inH<sub>2</sub>O (45 kPa)

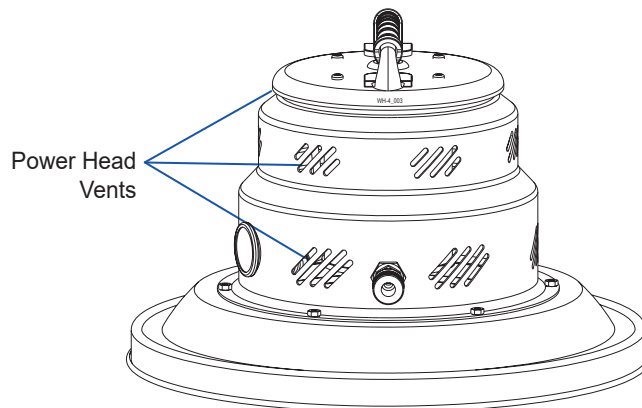
## GETTING STARTED

1. The vacuum power head and the vacuum tank ship in separate boxes.
2. Unbox the vacuum power head.
3. Visually inspect the power head to verify that no parts are missing or damaged.
4. Familiarize yourself with the power head.



### **⚠ WARNING**

5. Power Head Vents:
- NEVER BLOCK THE POWER HEAD VENTS.
  - NEVER WRAP THE POWER CORD AROUND THE POWER HEAD VENTS.

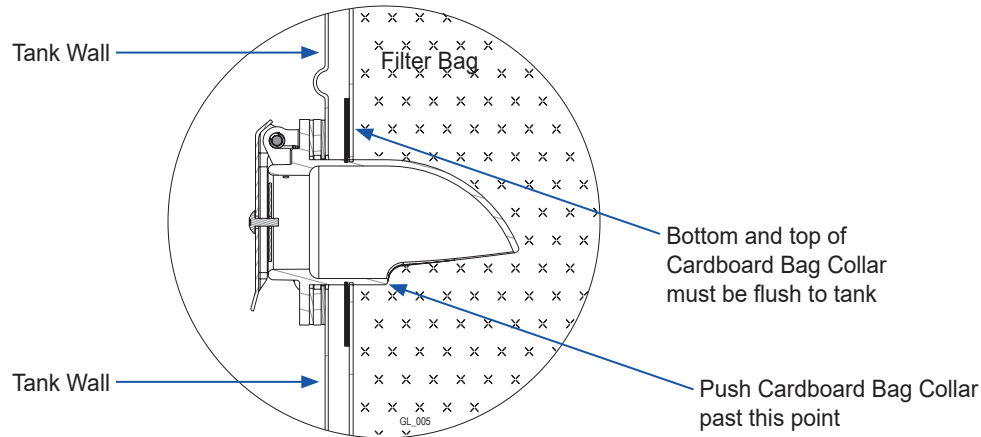


# GETTING STARTED

## Prepare the vacuum for use.

### 1. Install a filter bag on the tank.

- Unfold and fluff a new filter bag.
- Push the inlet tube into the hole on the cardboard collar of the filter bag.
- Grasp the sides of the cardboard collar and push it all the way onto the inlet tube.
- Verify the bottom of the collar is past the opening on the underside of the inlet tube.



### 2. Unbox a new HEPA filter.

- Remove the Clayton HEPA timer card from the box and set aside.
- Remove the HEPA cable lock from the box and set aside.
- Remove the HEPA filter from the box and remove from plastic bag.

### 3. Install a new HEPA filter.

- Holding the power head on its side, screw the new HEPA filter onto the filter adapter.
- Verify the white inner ring of the HEPA filter is fully seated against the underside of the power head.
  - If it is not, rotate it clockwise until fully seated.
- Refer to the instructions included with the HEPA cable lock to install the cable lock.

### 4. Attach the power head.

- Position the power head on the tank.
- Rotate the power head so that the Compressed Air Control valve on the power head is aligned with the inlet port on the vacuum tank.
- Latch the power head to the tank.

### 5. Activate the HEPA filter timer.

- Attach the new HEPA timer card with a zip tie (included) to the top handle of the vacuum.
- Follow the directions on timer card to activate it.

## COMPRESSED AIR FITTINGS

The vacuum has the following compressed air requirements to function properly:

- Compressed air must be clean, dry, and oil free to prevent blockage of the pneumatic system.
- Compressed air line and fittings must have a minimum diameter of ½ in (13 mm).

### Compressed Air Plug (Air In)

- The Vacuum is supplied with a ½ in (13 mm) industrial interchange compressed air plug for connection to your compressed air supply.

**The Compressed Air Plug may be changed to another nominal ½ in (13 mm) style if required.**

- Hold the Compressed Air Control Valve with a ⅞ in (22 mm) open end wrench.
- Remove the compressed air plug with either a ⅞ in (22 mm) deep socket or ⅞ in (22 mm) open end wrench.
- Install a new compressed air plug.

### Compressed Air Coupler (Air Out)

- The Vacuum is supplied with two ¼ in (6 mm) brass high flow compatible industrial interchange compressed air couplers.
- This coupler provides convenient pass through compressed air for an air tool connected to the vacuum.

**The Compressed Air Coupler may be changed to another nominal ¼ in (6 mm) style if required.**

- Hold the brass bulkhead fitting with a 1 in (26 mm) open end wrench.
- Remove the compressed air coupler with a ¾ in (19 mm) open end wrench.
- Install a new compressed air coupler.

## BEFORE EACH USE

### 1. Attach the vacuum hose.

- Open the Inlet Port on the vacuum tank.
- Insert the metal sleeve of the vacuum hose into the Inlet Port on the vacuum tank.

### 2. Activate the vacuum.

- Rotate the Compressed Air Control valve to the ON position.

# BAG FILTER CHANGE

If this vacuum is used to collect hazardous material, appropriate personal protective equipment may be required.

The bag filter should be replaced when  $\frac{3}{4}$  full.

## 1. Safe the vacuum.

- Disconnect the vacuum from power source.
- Remove all hoses from the vacuum.

## 2. Remove the power head.

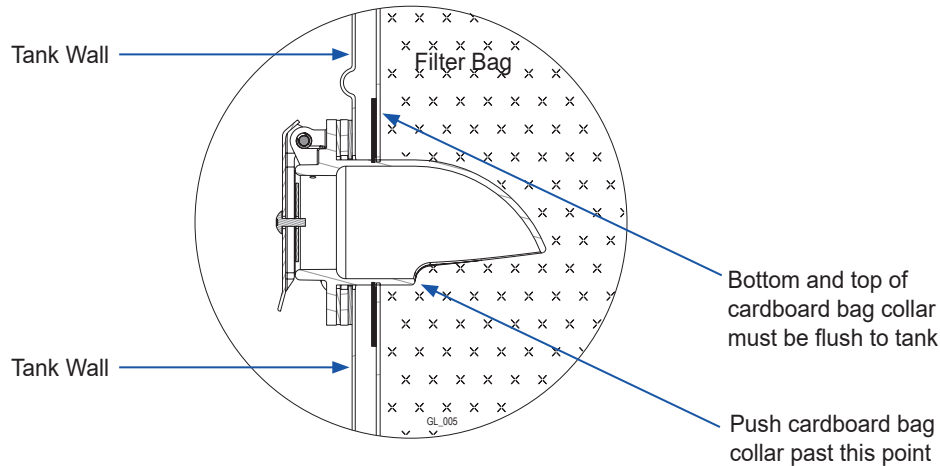
- Unlatch the power head from the tank.
- Lift the power head and the attached HEPA filter off the tank using the top handle.
- Carefully place the power head on the floor – avoid damaging the HEPA filter.

## 3. Remove the filter bag.

- Grasp the cardboard collar of the bag filter and slide it off the inlet port on the vacuum tank.
- Holding your hand over the opening on the bag, lift the bag out of the tank.
- Dispose of the bag according to company policy.

## 4. Install a new filter bag.

- Unfold and fluff a new filter bag.
- Push the inlet tube into the hole on the cardboard collar of the filter bag.
- Grasp the sides of the cardboard collar and push it all the way onto the inlet tube.
- Verify the bottom of the collar is past the opening on the underside of the inlet tube.



## 5. Verify the HEPA filter is seated.

- Holding the power head on its side, examine the HEPA Filter.
- Verify the white inner ring of the HEPA filter is fully seated against the underside of the power head.
  - If it is not, rotate it clockwise until fully seated.

## 6. Replace the power head.

- Position the power head on the tank.
- Rotate the power head so that the power switch on the Compressed Air Control valve is aligned with the inlet port on the vacuum tank.
- Latch the power head to the tank.

# SAFE FILTER CHANGE

## Principle of Operation

Safe Filter Change (SFC) uses a second Clayton HEPA vacuum and a Safe Filter Change Hose to create a downdraft within the primary vacuum while changing the bag filter.

If this vacuum is used to collect hazardous material, appropriate personal protective equipment may be required.

The bag filter should be replaced when  $\frac{3}{4}$  full.

### 1. Connect the vacuums.

- Verify the Compressed Air Control valve on both vacuums is in the OFF position.
- Remove all tools and vacuum hoses from the primary vacuum.
- Position the support vacuum with its inlet port facing the SFC port on the primary vacuum.
- Open the inlet port on the support vacuum.
- Insert one metal sleeve of the SFC hose into the inlet port on the support vacuum.
- Open the SFC port on the primary vacuum.
- Insert the other metal sleeve of the SFC hose into the SFC port on the primary vacuum.
- Connect both vacuums to a compressed air source.

### 2. Remove the power head.

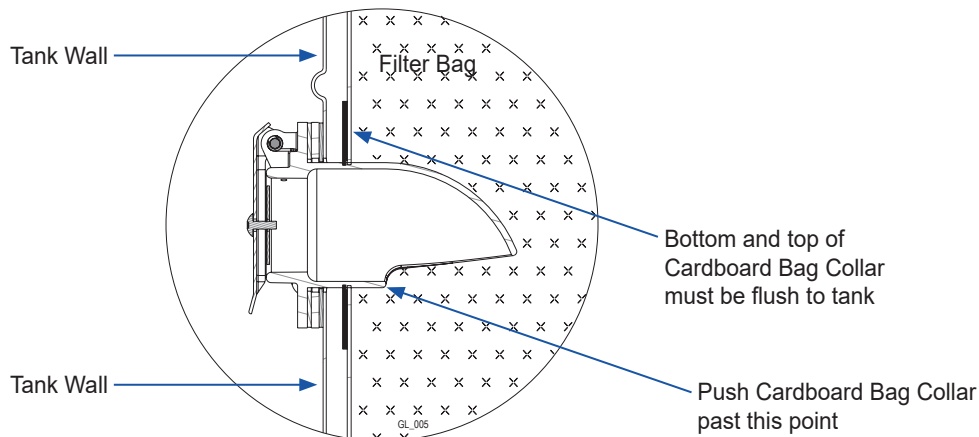
- Unlatch the primary vacuum's power head from its tank.
- Slowly lift the primary vacuum power head and attached HEPA filter approximately 1 inch off the tank using the top handle.
- Rotate the support vacuum's Compressed Air Control valve to the ON position to create the downdraft.
- Rotate the primary vacuum's Compressed Air Control valve to the ON position to prevent debris from falling off the HEPA filter.
- Carefully lift the primary vacuum's power head and attached HEPA filter off the tank using the top handle.
- Carefully place the power head on the floor – avoid damaging the HEPA filter. *The primary power head should remain running.*

### 3. Remove the bag filter.

- Turn a large disposal bag inside out around your arms.
- Using the disposal bag like a large mitten, grasp the cardboard collar of the bag filter and slide it off the inlet port.
- The disposal bag should remain between the user and the bag filter.
- Gently lift the bag filter while drawing the disposal bag down and around the bag filter.
- Gather the neck of the disposal bag and seal the bag closed using tape or ties.
- Dispose of the bag filter according to company policy.

### 4. Install a new bag filter.

- Unfold and fluff a new bag filter.
- Push the inlet tube into the hole on the cardboard collar of the bag filter.
- Grasp the sides of the cardboard collar and push it all the way onto the inlet tube.
- Verify the bottom of the collar is past the opening on the underside of the inlet tube.



*continued on next page*

## SAFE FILTER CHANGE

### 5. Verify the HEPA filter is seated.

- Holding the power head on its side, examine the HEPA filter.
- Verify the white inner ring of the HEPA filter is in contact with the underside of the power head.
  - If it is not, turn it clockwise until it comes in contact with the underside of the power head.

### 6. Replace the primary power head.

- Carefully position the primary power's head on the primary tank.
- Rotate the primary vacuum's Compressed Air Control valve to the OFF position.
- Rotate the power head until the Compressed Air Control valve is aligned with the inlet port on the vacuum tank.
- Latch the power head to the tank.
- Rotate the support vacuum's Compressed Air Control valve to the OFF position.

### 7. Disconnect the vacuums.

- Disconnect the SFC hose from the primary vacuum's SFC port.
- Disconnect the SFC hose from the support vacuum's inlet port.

## PRE-FILTER CHANGE

If this vacuum is used to collect hazardous material, appropriate personal protective equipment may be required.

Replace the pre-filter every five (5) bag filter changes or when it becomes visibly dirty.

### 1. Safe the vacuum.

- Disconnect the vacuum from the power source.
- Remove all hoses from the vacuum.

### 2. Remove the power head.

- Unlatch the power head from the tank.
- Lift the power head and the attached HEPA filter off the tank using the top handle.
- Carefully place the power head on the floor – avoid damaging the HEPA filter.

### 3. Remove the pre-filter.

- The pre-filter is wrapped around the HEPA filter and secured with Velcro.
- Find the seam and carefully peel the Velcro apart.
- Dispose of the pre-filter according to company policy.

### 4. Install a new pre-filter.

- Unfold a new pre-filter and remove the thin Velcro cover strip from the Velcro hooks.
- Wrap the pre-filter tightly around the HEPA filter.
- Secure the pre-filter by adhering the Velcro hooks to the side of the pre-filter.

### 5. Verify the HEPA filter is seated.

- Holding the power head on its side, examine the HEPA Filter.
- Verify the white inner ring of the HEPA filter is fully seated against the underside of the power head.
  - If it is not, rotate it clockwise until fully seated.

### 6. Replace the power head.

- Position the power head on the vacuum tank.
- Rotate the power head so that the Compressed Air Control valve on the power head is aligned with the inlet port on the vacuum tank.
- Latch the power head to the tank.

## HEPA FILTER CHANGE

If this vacuum is used to collect hazardous material, appropriate personal protective equipment may be required.

The HEPA filter should be replaced when it is damaged, clogged, or when the HEPA timer card has reached 12 months. *Never attempt to clean the HEPA filter as this will damage it.*

### 1. Safe the vacuum.

- Disconnect the vacuum from the power source.
- Remove all hoses from the vacuum.

### 2. Remove the power head.

- Unlatch the power head from the vacuum tank.
- Lift the power head and the attached HEPA filter off the tank using the top handle.
- Carefully place the power head on the floor – avoid damaging the HEPA filter.

### 3. Unbox a new HEPA filter.

- Remove the Clayton HEPA timer card from the box and set aside.
- Remove the HEPA cable lock from the box and set aside.
- Remove the HEPA filter from the box and remove it from the plastic bag.

### 4. Remove the old HEPA filter.

- Holding the power head on its side cut the HEPA cable lock and remove it.
- Unscrew the HEPA filter from the filter adapter.
- Dispose of the HEPA filter according to company policy.

### 5. Install a new HEPA Filter.

- Holding the power head on its side, screw the new HEPA filter onto the threaded filter adapter.
- Verify the white inner ring of the HEPA filter is fully seated against the underside of the power head.
  - If it is not, rotate it clockwise until fully seated.
- Refer to the instructions included with the HEPA cable lock to install the cable lock.

### 6. Replace the power head.

- Carefully position the power head on the vacuum tank.
- Rotate the power head so that the Compressed Air Control valve on the power head is aligned with the inlet port on the vacuum tank.
- Latch the power head to the vacuum tank.

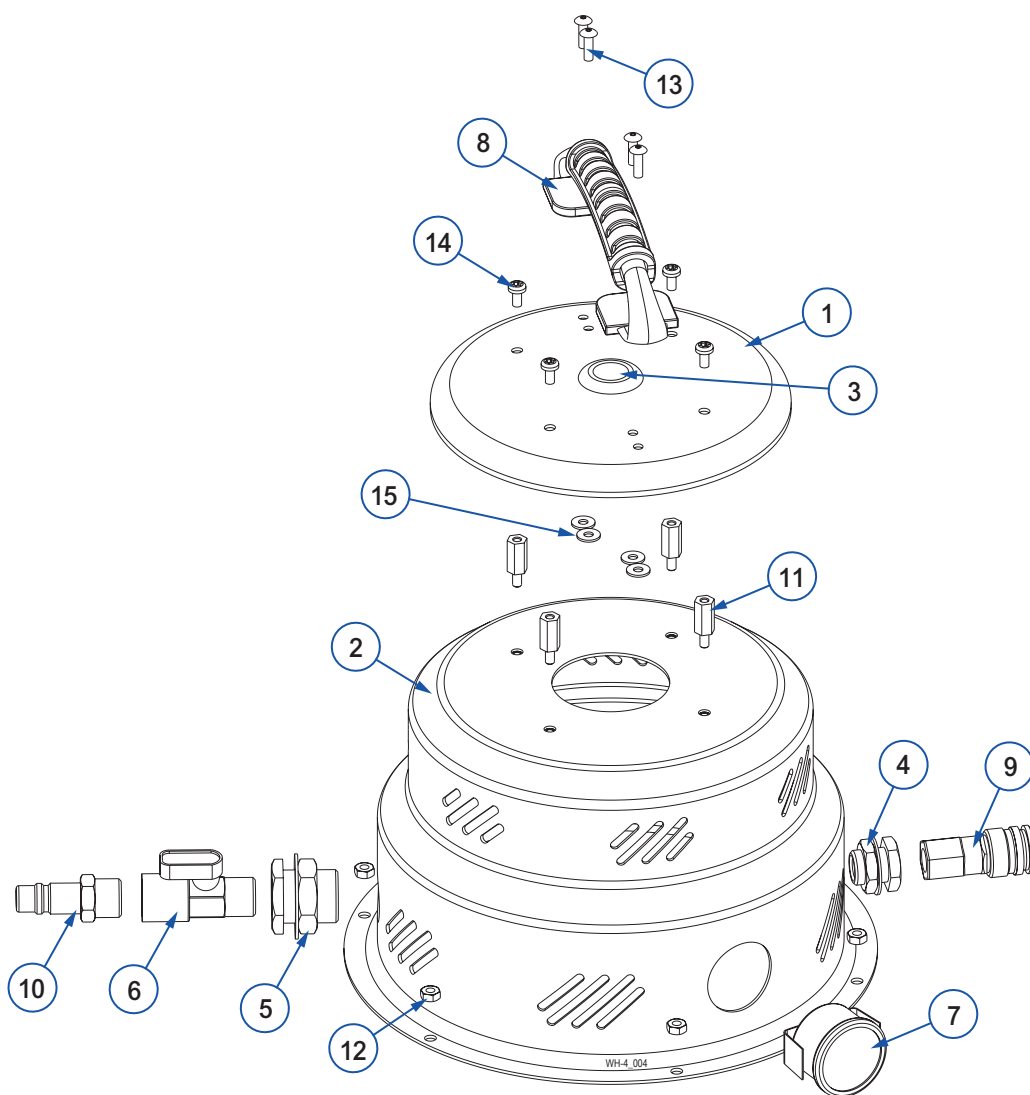
### 7. Activate the HEPA filter timer.

- Remove the old HEPA timer card from the power head.
- Attach the new HEPA timer card with a zip tie (included) to the top handle of the vacuum.
- Follow the directions on the timer card to activate.

# ILLUSTRATED PARTS BREAKDOWN

6xx-WH-4 (Sheet 1 of 4)

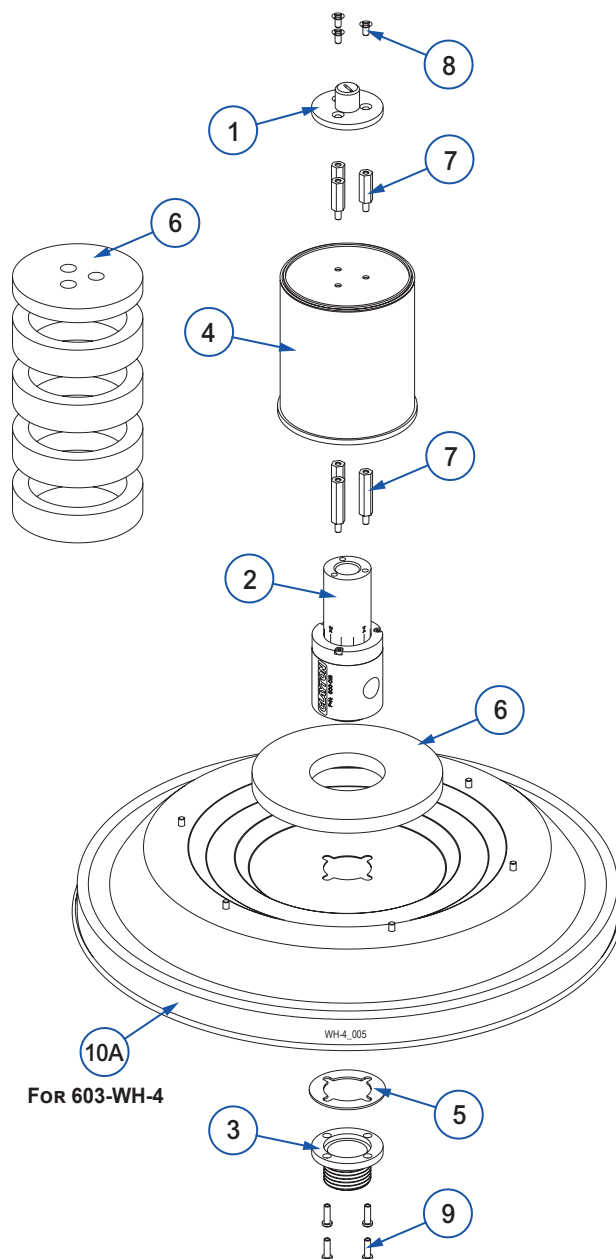
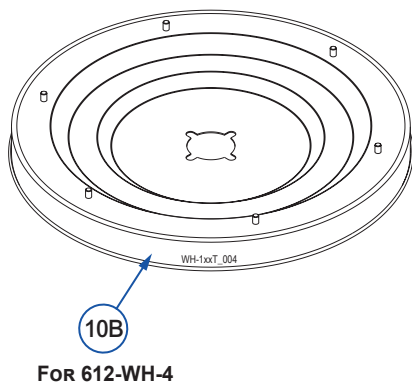
Seq	Item No	Description
1	601-300A	Vac Head Cap Alum Black
2	601-304E	Vac Head Shell Air Alum Black
3	911-12G22	Grommet, 3/4 x 1 3/8
4	918-04BH	Bulkhead Adapter, Brass, 1/4 in.
5	918-08BH	Bulkhead, 1/2 x 1/2, Brass
6	924-0502	Valve, 1/2, MPT x FPT, Ball Valve
7	925-P24R160-01	Gauge Pressure 1.5 in 0-160 psi Panel Mount
8	930-027	Handle, Carry, Flex Rubber
9	940-011	Fitting Coupler 1/4 in Hiflow x 1/4 MNPT
10	940-08PM	FTG, Plug, 1/2 in MNPT
11	FE103212-HZSM-Z	Hex Standoff, 10-32 MF x 3/4 in SS
12	NE10320608-HNSZ	Nut 10-32 Nylon Lock SS Short
13	RE0620-SDSSS-Z	Rivet Blind 3/16 x 0.625 Sealed SS (.251-.375)
14	SE103206-XPSM-Z	Screw 10-32 x 3/8 in SS TORX
15	WE133203-RFS-Z	Washer .203ID x .500OD .047H Round SS



# ILLUSTRATED PARTS BREAKDOWN

6xx-WH-4 (Sheet 2 of 3)

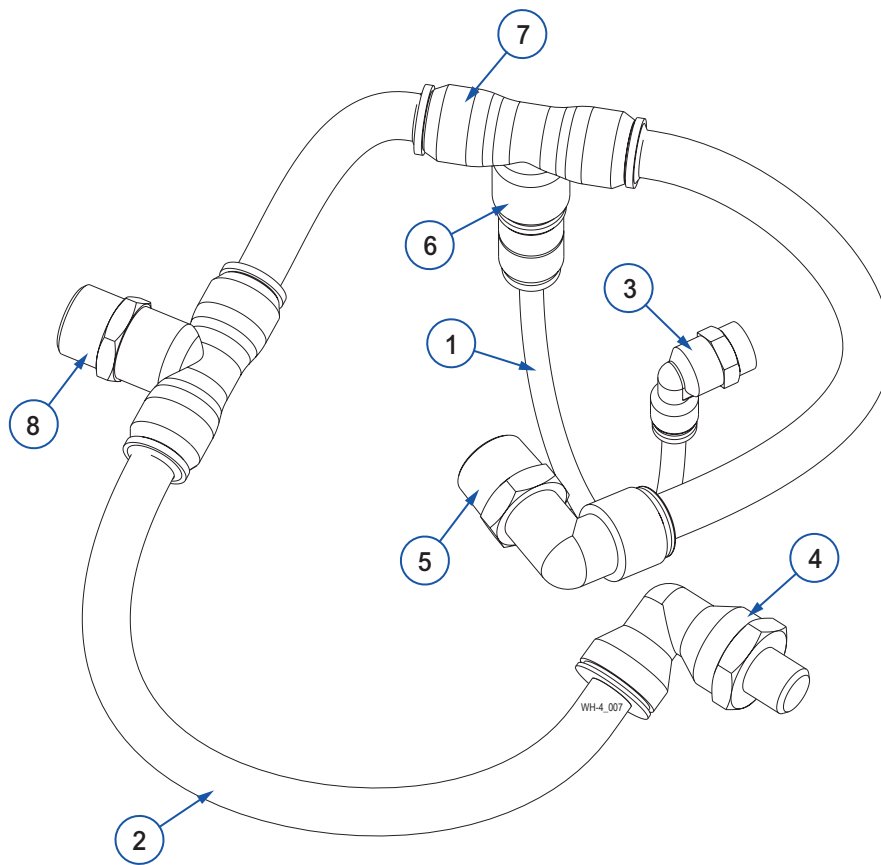
Seq	Item No	Description
1	500-401-08	Flange Motor Adjustment For SuperHornet
2	600-019	Air Motor WartHog
3	601-021	Filter Adapter, WartHog
4	602-812	Can Plastic Muffler Black
5	911-011	Gasket, Filter Adapter
6	911-812	Muffler Felt Kit For WartHog Air
7	FE103216-HZSM-Z	Hex Standoff, 10-32 MF x 1 in SS
8	SE103210-PFSM-Z	Screw, FH100, SS, 1032 x .625
9	SE103210-ACSM-L	Screw 10-32 x 5/8 Low Socket Cap SS
10A	601-300B16	Vac Head Base 16 in CRS Black
10B	601-300B12	Vac Head Base 12 in CRS Black



## ILLUSTRATED PARTS BREAKDOWN

6xx-WH-4 (Sheet 3 of 3)

Seq	Item No	Description
1	922-T.25GN	1/4 in OD. Nylon Tubing Green
2	922-T.50NGE	Tubing, 1/2 Polyethylene, Orange
3	927-04L-02F	FTG Elbow 1/8 FNPT To 1/4 PC
4	927-08L-04	FTG Elbow 1/2 PC To 1/4 MNPT
5	927-08L-08	FTG Elbow 1/2 PC To 1/2 MNPT
6	927-08R04	FTG Reducer 1/2 MPC To 1/4 PC
7	927-08T	FTG Union Tee 1/2 PC
8	927-08T-08	FTG Tee 1/2 PC To 1/2 MPT



# LIMITED LIFETIME WARRANTY TERMS AND CONDITIONS

## Warranty Terms

Clayton Associates, Inc. guarantees its manufactured products against defects in materials or workmanship and will either repair or replace all parts that prove defective under normal use during the lifetime of the products. The warranty period shall commence from the date of paid invoice.

This warranty does not cover (a) repairs due to normal wear, accident, neglect, misuse, or use other than as indicated in the instruction booklet (b) products manufactured by third parties and distributed by Clayton (c) wear items such as bearings, rotor blades, regulators, valve stems, levers, shrouds, guards, O-rings, seals, gaskets, motor brushes, and other wearable parts.

## Repair within the Continental US

During the first 90 days of the warranty period, Clayton will provide parts and labor to the customer's site at no charge or pay freight costs associated with returning the products for repair to a Clayton selected service location and repair the product at no charge. Clayton personnel will determine the best way to repair the product.

Past 90 days, Clayton will provide parts to the customer's site at no charge or the customer may ship the product to a Clayton selected service location at customer's expense and Clayton will repair the product at no charge and provide return shipping.

## Repair Outside the Continental US

Clayton will provide parts to the customer's site at no charge or the customer may ship the product to a Clayton selected service location at customer's expense and Clayton will repair the product at no charge and provide return shipping.

## Limitation of Liability

Clayton shall not in any event be liable for any damages, loss of production time or profits, whether based on contract, warranty, negligence, strict liability or otherwise, including without limitation any consequential, incidental or special damages, arising with respect to the equipment or its failure to operate.

Clayton Associates, Inc. makes no other warranty or representation of any kind, except that of title, and all other warranties, express or implied, including warranties of merchantability or fitness for any particular purpose, are hereby expressly disclaimed.

**THIS PAGE IS INTENTIONALLY BLANK**



**Clayton products are proudly made in the USA**

